

**UNITED STATES SECURITIES AND EXCHANGE COMMISSION**  
**Washington, DC 20549**  
**FORM 10-K**

(Mark One)

ANNUAL REPORT PURSUANT TO SECTION 13 or 15(d) OF THE SECURITIES EXCHANGE ACT OF 1934

For the fiscal year ended January 1, 2011

OR

TRANSITION REPORT PURSUANT TO SECTION 13 OR 15(d) OF THE SECURITIES EXCHANGE ACT OF 1934

Commission File Number 1-14225

**HNI Corporation**

An Iowa Corporation

408 East Second Street  
P. O. Box 1109  
Muscatine, IA 52761-0071  
563/272-7400

IRS Employer No. 42-0617510

Securities registered pursuant to Section 12(b) of the Act:

Title of each class	Name of each exchange on which registered
Common Stock, with par value of \$1.00 per share.	New York Stock Exchange

Securities registered pursuant to Section 12(g) of the Act: None.

Indicate by check mark if the registrant is a well-known seasoned issuer, as defined in Rule 405 of the Securities Act.  
Yes  No

Indicate by check mark if the registrant is not required to file reports pursuant to Section 13 or Section 15(d) of the Act.  
Yes  No

Indicate by check mark whether the registrant (1) has filed all reports required to be filed by Section 13 or 15(d) of the Securities Exchange Act of 1934 during the preceding 12 months (or for such shorter period that the registrant was required to file such reports), and (2) has been subject to such filing requirements for the past 90 days.  
Yes  No

Indicate by check mark whether the registrant has submitted electronically and posted on its corporate Web site, if any, every Interactive Data File required to be submitted and posted pursuant to Rule 405 of Regulation S-T (§232.405 of this chapter) during the preceding 12 months (or for such shorter period that the registrant was required to submit and post such files).  
Yes  No

Indicate by check mark if disclosure of delinquent filers pursuant to Item 405 of Regulation S-K (§229.405 of this chapter) is not contained herein, and will not be contained, to the best of registrant's knowledge, in definitive proxy or information statements incorporated by reference in Part III of this Form 10-K or any amendment to this Form 10-K.

Indicate by check mark whether the registrant is a large accelerated filer, an accelerated filer, a non-accelerated filer or a smaller reporting company. See definitions of "large accelerated filer," "accelerated filer" and "smaller reporting company" in Rule 12b-2 of the Exchange Act.

Large accelerated filer	<input checked="" type="checkbox"/>	Accelerated filer	<input type="checkbox"/>
Non-accelerated filer	<input type="checkbox"/> (Do not check if a smaller reporting company)	Smaller reporting company	<input type="checkbox"/>

Indicate by check mark whether the registrant is a shell company (as defined in Rule 12b-2 of the Act).

Yes  No

The aggregate market value of the voting stock held by nonaffiliates of the Registrant, as of July 3, 2010 was \$824,971,237, based on the New York Stock Exchange closing price for such shares on that date, assuming for purposes of this calculation that all 5% holders and all directors and executive officers of the Registrant are affiliates.

The number of shares outstanding of the Registrant's common stock, as of February 4, 2011 was 44,840,782.

#### **Documents Incorporated by Reference**

Portions of the Registrant's Definitive Proxy Statement on Schedule 14A for the Annual Meeting of Shareholders to be held on May 10, 2011 are incorporated by reference into Part III.

# ANNUAL REPORT ON FORM 10-K

## TABLE OF CONTENTS

### PART I

	<u>Page</u>
Item 1. Business	4
Item 1A. Risk Factors	10
Item 1B. Unresolved Staff Comments	17
Item 2. Properties	17
Item 3. Legal Proceedings	18
Table I – Executive Officers of the Registrant	19
Item 5. Market for Registrant's Common Equity, Related Stockholder Matters and Issuer Purchases of Equity Securities	20
Item 6. Selected Financial Data	21
Item 7. Management's Discussion and Analysis of Financial Condition and Results of Operations	22
Item 7A. Quantitative and Qualitative Disclosures About Market Risk	32
Item 8. Financial Statements and Supplementary Data	32
Item 9. Changes in and Disagreements With Accountants on Accounting and Financial Disclosure	33
Item 9A. Controls and Procedures	33
Item 9B. Other Information	33

### PART III

Item 10. Directors, Executive Officers and Corporate Governance	34
Item 11. Executive Compensation	34
Item 12. Security Ownership of Certain Beneficial Owners and Management and Related Stockholder Matters	34
Item 13. Certain Relationships and Related Transactions, and Director Independence	34
Item 14. Principal Accounting Fees and Services	34

### PART IV

Item 15. Exhibits, Financial Statement Schedules	35
Signatures	36
Management Report on Internal Control Over Financial Reporting	38
Report of Independent Registered Public Accounting Firm	39
Financial Statements	40
Financial Statement Schedules	72
Index of Exhibits	73

ADDITIONAL ITEM INCLUDED HEREIN THAT WAS NOT INCLUDED IN THE ANNUAL REPORT ON FORM 10-K FILED WITH THE SECURITIES AND EXCHANGE COMMISSION ON FEBRUARY 25, 2011: Performance Graph	75
---	----

# ANNUAL REPORT ON FORM 10-K

## PART I

### **ITEM 1. BUSINESS**

#### **General**

HNI Corporation (the "Corporation", "we", "us" or "our") is an Iowa corporation incorporated in 1944. The Corporation is a provider of office furniture and hearth products. A broad office furniture product offering is sold to dealers, wholesalers, national office product distributors, end-user customers, and federal, state and local governments. Dealers and wholesalers are the major channels based on sales. Hearth products include a full array of gas, electric, wood and biomass burning fireplaces, inserts, stoves, facings and accessories. These products are sold through a national system of dealers and distributors, as well as Corporation-owned distribution and retail outlets. In fiscal 2010, the Corporation had net sales of \$1.7 billion, of which approximately \$1.4 billion or 83% was attributable to office furniture products and \$0.3 billion or 17% was attributable to hearth products. Please refer to Operating Segment Information in the Notes to Consolidated Financial Statements for further information about operating segments.

The Corporation is organized into a corporate headquarters and operating units with offices, manufacturing plants, distribution centers and sales showrooms in the United States, Canada, China, Hong Kong and Taiwan. See Item 2. Properties later in this report for additional related discussion.

Eight operating units, marketing under various brand names, participate in the office furniture industry. These operating units include: The HON Company, Allsteel Inc., Maxon Furniture Inc., The Gunlocke Company L.L.C., Paoli Inc., Hickory Business Furniture, LLC ("HBF") and HNI Hong Kong Limited ("Lamex"). Each of these operating units provides products which are sold through various channels of distribution and segments of the industry.

The operating unit Hearth & Home Technologies Inc. ("Hearth & Home") participates in the hearth products industry. The retail and distribution brand for this operating unit is Fireside Hearth & Home.

HNI International Inc. ("HNI International") sells office furniture products manufactured by the Corporation's operating units in select markets outside the United States and Canada. With dealers and servicing partners located in more than fifty countries, HNI International provides project management services virtually anywhere in the world.

Since its inception, the Corporation has been committed to systematically eliminating waste and in 1992 introduced its process improvement approach known as Rapid Continuous Improvement ("RCI"), which focuses on streamlining design, manufacturing and administrative processes. The Corporation's RCI program, in which most members participate, has contributed to increased productivity, lower costs, improved product quality and enhanced workplace safety. In addition, the Corporation's RCI efforts enable it to offer short average lead times, from receipt of order to delivery and installation, for most of its products.

The Corporation distributes its products through an extensive network of independent office furniture dealers, office products dealers, wholesalers and retailers. The Corporation is a supplier of office furniture to the largest nationwide distributors of office products.

The Corporation's product development efforts are focused on developing and providing solutions that are relevant and differentiated, and deliver quality, aesthetics and style.

An important element of the Corporation's success has been its member-owner culture, which has enabled it to attract, develop, retain and motivate skilled, experienced and efficient members (i.e., employees). Each of the Corporation's eligible members own stock in the Corporation through a number of stock-based plans, including a member stock purchase plan and a profit-sharing retirement plan, which drives a unique level of commitment to the Corporation's success throughout the workforce.

For further financial-related information with respect to acquisitions, restructuring and the Corporation's operations in general, refer to "Item 7. Management's Discussion and Analysis of Financial Condition and Results of Operations" later in this report, and the following sections in the Notes to Consolidated Financial Statements: Nature of Operations, Business Combinations and Operating Segment Information.

## **Industry**

According to the Business and Institutional Furniture Manufacturer's Association ("BIFMA"), U.S. office furniture industry shipments were estimated to be \$8.3 billion in 2010, an increase of 6% compared to 2009, which was a 30% decrease from 2008 levels. The Corporation believes the increase in 2010 is a reflection of the ongoing economic improvement in the industry.

The U.S. office furniture market consists of two primary channels—the project or contract channel and the supplies-driven channel. The project channel has traditionally been characterized by sales of office furniture and services to large corporations, primarily for new office facilities, relocations or department or office redesigns, which are frequently customized to meet specific client and designer preferences. Project furniture is generally purchased through office furniture dealers who typically prepare a custom-designed office layout emphasizing image and design. The selling process is often complex and lengthy and generally has several manufacturers competing for the same projects.

The supplies-driven channel of the market, in which the Corporation is a leader, primarily represents smaller orders of office furniture purchased by businesses and home office users on the basis of price, quality, selection and speed and reliability of delivery. Office products dealers, wholesalers and national office product distributors are the primary distribution channels in this market channel. Office furniture and products dealers publish periodic catalogs displaying office furniture and products from various manufacturers.

The Corporation also competes in the domestic hearth products industry, where it is a market leader. Hearth products are typically purchased by builders during the construction of new homes and homeowners as an additional heating source during the renovation of existing homes. Both types of purchases involve seasonality with remodel/retrofit activity being concentrated in the September to December time-frame. Distribution is primarily through independent dealers, who may buy direct from the manufacturer or from an intermediate distributor. The Corporation sells approximately 40% of its hearth products to the new construction/builder channel.

## **Growth Strategy**

The Corporation's strategy is to build on its position as a leading manufacturer of office furniture and hearth products in North America and pursue select global markets where opportunities exist to create value. The components of this growth strategy are to introduce new products, build brand equity, provide outstanding customer satisfaction by focusing on the end-user, strengthen the distribution network, respond to global competition, pursue complementary strategic acquisitions, enter markets not currently served and continually reduce costs.

The Corporation's strategy has a dual focus: working continuously to extract new growth from its core markets while identifying and developing new, adjacent potential areas of growth. The Corporation focuses on extracting new growth from each of its existing businesses by deepening its understanding of end-users, using new insights gained to refine branding, selling and marketing and developing new products to serve them better. The Corporation also pursues opportunities in potential growth drivers related to its core business, such as vertical markets or new distribution models.

## **Employees/Members**

As of January 1, 2011, the Corporation employed approximately 8,500 persons, 8,000 of whom were full-time and 500 of whom were temporary personnel. The Corporation believes its labor relations are good.

## **Products and Solutions**

### Office Furniture

The Corporation designs, manufactures and markets a broad range of office furniture in four basic categories: (i) storage, including vertical files, lateral files and pedestals; (ii) seating, including task chairs, executive desk chairs, conference/training chairs and side chairs; (iii) office systems (typically modular and moveable workspaces with integrated work surfaces, space dividers and lighting); and (iv) desks and related products, including tables, bookcases and credenzas. In order to meet the demands of various markets, the Corporation's products are sold under the Corporation's brands – HON<sup>®</sup>, Allsteel<sup>®</sup>, Maxon<sup>®</sup>, Gunlocke<sup>®</sup>, Paoli<sup>®</sup>, HBF<sup>®</sup>, basyx<sup>™</sup> and Lamex<sup>®</sup>, as well as private labels.

The following is a description of the Corporation's major product categories and product lines:

#### *Storage*

The Corporation offers a variety of storage options designed either to be integrated into the Corporation's office systems products or to function as freestanding furniture in office applications. The Corporation sells most of its freestanding storage through independent office products and office furniture dealers, nationwide chains of office products dealers, wholesalers and national office product distributors.

#### *Seating*

The Corporation's seating line includes chairs designed for all types of office work. The chairs are available in a variety of frame colors, coverings and a wide range of price points. Key customer criteria in seating includes superior design, ergonomics, aesthetics, comfort and quality.

#### *Office Panel Systems*

The Corporation offers a complete line of office panel system products in order to meet the needs of a wide spectrum of organizations. Office panel systems may be used for team work settings, private offices and open floor plans. They are typically modular and movable workspaces composed of adjustable partitions, work surfaces, desk extensions, storage cabinets and electrical lighting systems which can be moved, reconfigured and reused within the office. Office panel systems offer a cost-effective and flexible alternative to traditional drywall office construction. A typical installation of office panels often includes related sales of seating, storage and accessories.

The Corporation offers whole office solutions, movable panels, storage units and work surfaces that can be installed easily and reconfigured to accommodate growth and change in organizations. The Corporation and its dealer partners also offer consultative selling and design services for its office system products.

#### *Desks and Related Products*

The Corporation's offering of desks and related products includes stand-alone steel, laminate and wood furniture items, such as desks, bookshelves, credenzas and mobile deskings. These products are available in a range of designs and price points. The Corporation's desks and related products are sold to a wide variety of customers from those designing large office configurations to small retail and home office purchasers. The Corporation offers a variety of tables designed for use in conference rooms, private offices, training areas, team work settings and open floor plans.

#### Hearth Products

The Corporation is North America's largest manufacturer and marketer of prefabricated fireplaces, hearth stoves and related products, primarily for the home, which it sells under its widely recognized Heatilator<sup>®</sup>, Heat & Glo<sup>®</sup>, Quadra-Fire<sup>®</sup> and Harman Stove<sup>™</sup> brand names.

The Corporation's line of hearth products includes a full array of gas, electric and wood burning fireplaces, inserts, stoves, facings and accessories. Heatilator<sup>®</sup> and Heat & Glo<sup>®</sup> are brand leaders in the two largest segments of the home fireplace market: vented-gas and wood fireplaces. The Corporation is the leader in "direct vent" fireplaces, which replace the chimney-venting system used in traditional fireplaces with a less expensive vent through the roof or an outer wall. In addition, the Corporation is the leader in pellet-burning stoves and furnaces with its Quadra-Fire and Harman product lines which provide home heating solutions using renewable fuel, an environmentally friendly trend that has come to the forefront in home heating and continues to grow. See "Intellectual Property" under this Item 1. Business for additional details.

#### **Manufacturing**

The Corporation manufactures office furniture in Alabama, Georgia, Indiana, Iowa, New York, North Carolina and China. The Corporation manufactures hearth products in Iowa, Maryland, Minnesota, Washington and Pennsylvania.

The Corporation purchases raw materials and components from a variety of suppliers, and generally most items are available from multiple sources. Major raw materials and components include coil steel, aluminum, zinc, castings, lumber, veneer, particleboard, fabric, paint, lacquer, hardware, plastic products and shipping cartons.

Since its inception, the Corporation has focused on making its manufacturing facilities and processes more flexible while at the same time reducing cost, eliminating waste and improving product quality. In 1992, the Corporation adopted the principles of RCI, which focus on developing flexible and efficient design, manufacturing and administrative processes that remove excess

cost. The Corporation's lean manufacturing philosophy leverages the creativity of its members to eliminate and reduce costs. To achieve flexibility and attain efficiency goals, the Corporation has adopted a variety of production techniques, including cellular manufacturing, focused factories, just-in-time inventory management, value engineering, business simplification and 80/20 principles. The application of RCI has increased productivity by reducing set-up and processing times, square footage, inventory levels, product costs and delivery times, while improving quality and enhancing member safety. The Corporation's RCI process involves production and administrative employees, management, customers and suppliers. The Corporation has facilitators, coaches and consultants dedicated to the RCI process and strives to involve all members in the RCI process. Manufacturing also plays a key role in the Corporation's concurrent product development process that primarily seeks to design new products for ease of manufacturability.

## **Product Development**

The Corporation's product development efforts are primarily focused on developing end-user solutions that are relevant, differentiated and focused on quality, aesthetics, style, sustainable design and on reducing manufacturing costs. The Corporation accomplishes this through improving existing products, extending product lines, applying ergonomic research, improving manufacturing processes, applying alternative materials and providing engineering support and training to its operating units. The Corporation conducts its product development efforts at both the corporate and operating unit level. The Corporation invested approximately \$21.8 million, \$21.1 million and \$27.8 million in product development during fiscal 2010, 2009 and 2008, respectively, and has budgeted \$23 million for product development in fiscal 2011.

## **Intellectual Property**

As of January 1, 2011, the Corporation owned 334 U.S. and 290 foreign patents and had applications pending for 16 U.S. and 50 foreign patents. In addition, the Corporation holds 168 U.S. and 375 foreign trademark registrations and has applications pending for 16 U.S. and 26 foreign trademarks.

The Corporation's principal office furniture products do not require frequent technical changes. The Corporation believes neither any individual office furniture patent nor the Corporation's office furniture patents in the aggregate are material to the Corporation's business as a whole.

The Corporation's patents covering its hearth products protect various technical innovations. While the acquisition of patents reflects Hearth & Home's position in the market as an innovation leader, the Corporation believes neither any individual hearth product patent nor the Corporation's hearth product patents in the aggregate are material to the Corporation's business as a whole.

The Corporation applies for patent protection when it believes the expense of doing so is justified, and the Corporation believes the duration of its registered patents is adequate to protect these rights. The Corporation also pays royalties in certain instances for the use of patents on products and processes owned by others.

The Corporation actively protects its trademarks it believes have significant value.

## **Sales and Distribution: Customers**

The Corporation sells its office furniture products through five principal distribution channels. The first channel consisting of independent, local office furniture and office products dealers, specializes in the sale of a broad range of office furniture and office furniture systems to business, government, education, health care entities and home office owners.

The second distribution channel comprises national office product distributors including Staples, Inc., Office Max Incorporated and Office Depot, Inc. These distributors sell furniture along with office supplies through a national network of dealerships and sales offices, which assist their customers with the evaluation of office space requirements, systems layout and product selection and design and office solution services provided by professional designers. All of these distributors also sell through retail office products superstores.

The third distribution channel, comprising corporate accounts, is where the Corporation has the lead selling relationship with the end-user. Installation and service are normally provided through a dealer.

The fourth distribution channel comprises wholesalers that serve as distributors of the Corporation's products to independent dealers, national supply dealers and superstores. The Corporation sells to the nation's largest wholesalers, United Stationers Inc.

and S.P. Richards Company. Wholesalers maintain inventory of standard product lines for resale to the various dealers and retailers. They also special order products from the Corporation in customer-selected models and colors. The Corporation's wholesalers maintain warehouse locations throughout the United States, which enables the Corporation to make its products available for rapid delivery to resellers anywhere in the country.

The fifth distribution channel comprises direct sales of the Corporation's products to federal, state and local government offices.

The Corporation's office furniture sales force consists of regional sales managers, salespersons and firms of independent manufacturers' representatives who collectively provide national sales coverage. Sales managers and salespersons are compensated by a combination of salary and incentive bonus.

Office products dealers, national wholesalers and retailers market their products over the Internet and through catalogs published periodically. These catalogs are distributed to existing and potential customers. The Corporation believes the inclusion of the Corporation's product lines in customer catalogs and e-business listings offers strong potential for increased sales of the listed product lines due to the exposure provided.

The Corporation also makes export sales through HNI International to office furniture dealers and wholesale distributors serving select foreign markets. Distributors are principally located in Latin America, the Caribbean and the Middle East. With the acquisition of Lamex in 2006, the Corporation manufactures and distributes office furniture directly to end-users and through independent dealers and distributors in greater China and Asia.

Limited quantities of select finished goods inventories primarily built to order awaiting shipment are at the Corporation's principal manufacturing plants and at its various distribution centers.

Hearth & Home sells its fireplace and stove products through dealers, distributors and Corporation-owned distribution and retail outlets. The Corporation has a field sales organization of regional sales managers, salespersons, and firms of independent manufacturers' representatives.

In fiscal 2010, the Corporation's five largest customers represented approximately 25% of its consolidated net sales. One customer, United Stationers Inc., accounted for approximately 10% of the Corporation's consolidated net sales in fiscal 2010, 9% in fiscal 2009, and 10% in fiscal 2008. The substantial purchasing power exercised by large customers may adversely affect the prices at which the Corporation can successfully offer its products.

The above percentages do not include revenue from various government agencies. In aggregate, entities purchasing under the Corporation's U.S. General Services Administration contracts collectively accounted for approximately 8% of the Corporation's consolidated net sales.

As of January 1, 2011, the Corporation had an order backlog of approximately \$150.5 million, which will be filled in the ordinary course of business within the first few weeks of the fiscal year. This compares with \$121.1 million as of January 2, 2010, and \$130.8 million as of January 3, 2009. Backlog, in terms of percentage of net sales, was 8.9%, 7.3% and 5.3%, for fiscal 2010, 2009 and 2008, respectively. The Corporation's products are typically manufactured and shipped within a few weeks following receipt of order. The dollar amount of the Corporation's order backlog is, therefore, not considered by management to be a leading indicator of the Corporation's expected sales in any particular fiscal period.

## **Competition**

The Corporation is the second largest office furniture manufacturer in the world and believes it is the largest provider of furniture to small- and medium-sized workplaces. The Corporation is the largest manufacturer and marketer of fireplaces in North America.

The office furniture industry is highly competitive, with a significant number of competitors offering similar products. The Corporation competes by emphasizing its ability to deliver compelling value products, solutions and a high level of customer service. The Corporation competes with large office furniture manufacturers, which cover a substantial portion of the North America market share in the project-oriented office furniture market, such as Steelcase Inc., Haworth, Inc., Herman Miller, Inc. and Knoll, Inc. The Corporation also competes with a number of other office furniture manufacturers, including The Global Group (a Canadian company), Kimball International, Inc., KI and Teknion Corporation (a Canadian company), as well as global importers. The Corporation faces significant price competition from its competitors and may encounter competition from new market entrants.



Hearth products, consisting of prefabricated fireplaces and related products, are manufactured by a number of national and regional competitors. The Corporation competes primarily against a broad range of manufacturers, including Travis Industries Inc., Lennox International Inc., Monessen Hearth Systems Co., FMI Products, LLC, Wolf Steel Ltd. (Napoleon) and FPI Fireplace Products International Ltd. (Regency).

Both office furniture and hearth products compete on the basis of performance, quality, price, complete and on-time delivery to the customer and customer service and support. The Corporation believes it competes principally by providing compelling value products designed to be among the best in their price range for product quality and performance, superior customer service and short lead-times. This is made possible, in part, by the Corporation's on-going investment in product development, highly efficient and low cost manufacturing operations and an extensive distribution network.

For further discussion of the Corporation's competitive situation, refer to "Item 7. Management's Discussion and Analysis of Financial Condition and Results of Operations" later in this report.

### **Effects of Inflation**

Certain business costs may, from time to time, increase at a rate exceeding the general rate of inflation. The Corporation's objective is to offset the effect of normal inflation on its costs primarily through productivity increases in combination with certain adjustments to the selling price of its products as competitive market and general economic conditions permit.

Investments are routinely made in modernizing plants, equipment, support systems and RCI programs. These investments collectively focus on business simplification and increasing productivity which helps to offset the effect of rising material and labor costs. The Corporation also routinely employs ongoing cost control disciplines. In addition, the last-in, first-out ("LIFO") valuation method is used for most of the Corporation's inventories, which ensures changing material and labor costs are recognized in reported income and, more importantly, these costs are recognized in pricing decisions.

### **Environmental**

The Corporation is subject to a variety of environmental laws and regulations governing use of materials and substances in products, the management of wastes resulting from use of certain material and the remediation of contamination associated with releases of hazardous substances used in the past. Although the Corporation believes it is in material compliance with all of the various regulations applicable to its business, there can be no assurance requirements will not change in the future or the Corporation will not incur material costs to comply with such regulations. The Corporation has trained staff responsible for monitoring compliance with environmental, health and safety requirements. The Corporation's environmental staff works with responsible personnel at each manufacturing facility, the Corporation's environmental legal counsel and consultants on the management of environmental, health and safety issues. The Corporation's ultimate goal is to reduce and, when practical, eliminate the generation of environmental pollutants in its manufacturing processes.

The Corporation's environmental management system has earned the recognition of numerous state and federal agencies as well as non-government organizations. The Corporation's lean manufacturing philosophy leverages the creativity of its members to eliminate waste and reduce cost. Aligning these continuous improvement initiatives with the Corporation's environmental objectives creates a model of the triple bottom line of sustainable development where members work toward shared goals of personal growth, economic reward and a healthy environment for the future.

Over the past several years, the Corporation has expanded its environmental management system and established metrics to influence product design and development, supplier and supply chain performance, energy and resource consumption and the impacts of its facilities. In addition, the Corporation is providing sustainability training to senior decision makers and has assigned resources to documenting and communicating its progress to an increasingly knowledgeable market. Integrating sustainable objectives into core business systems is consistent with the Corporation's vision and ensures its commitment to being a sustainable enterprise remains a priority for all members. The Corporation's growing commitment to sustainability has allowed its businesses to obtain level<sup>®</sup> certification for the office furniture industry's widest and most complete offering of products rated under the ANSI/BIFMA e3 Furniture Sustainability Standard.

Compliance with federal, state and local environmental regulations has not had a material effect on the capital expenditures, earnings or competitive position of the Corporation to date. The Corporation does not anticipate financially material capital expenditures will be required during fiscal 2011 for environmental control facilities. It is management's judgment that compliance with current regulations should not have a material effect on the Corporation's financial condition or results of

operations. However, there can be no assurance new environmental legislation and technology in this area will not result in or require material capital expenditures.

## **Business Development**

The development of the Corporation's business during the fiscal years ended January 1, 2011, January 2, 2010 and January 3, 2009 is discussed in "Item 7. Management's Discussion and Analysis of Financial Condition and Results of Operations" later in this report.

## **Available Information**

Information regarding the Corporation's annual reports on Form 10-K, quarterly reports on Form 10-Q, current reports on Form 8-K, and any amendments to these reports, will be made available, free of charge, on the Corporation's website at [www.hnicorp.com](http://www.hnicorp.com), as soon as reasonably practicable after the Corporation electronically files such reports with or furnishes them to the Securities and Exchange Commission (the "SEC"). The Corporation's information is also available from the SEC's Public Reference room at 100 F Street, N.E., Washington, D.C. 20549, or on the SEC website at [www.sec.gov](http://www.sec.gov).

## **Forward-Looking Statements**

Statements in this report to the extent they are not statements of historical or present fact, including statements as to plans, outlook, objectives and future financial performance, are "forward-looking" statements, within the meaning of Section 27A of the Securities Act of 1933 and Section 21E of the Securities Exchange Act of 1934 and are made pursuant to the safe harbor provisions of the Private Securities Litigation Reform Act of 1995. Words, such as "anticipate," "believe," "could," "confident," "estimate," "expect," "forecast," "hope," "intend," "likely," "may," "plan," "possible," "potential," "predict," "project," "should," "will," "would" and variations of such words and similar expressions identify forward-looking statements.

Forward-looking statements involve known and unknown risks and uncertainties, which may cause the Corporation's actual results in the future to differ materially from expected results. The most significant factors known to the Corporation that may adversely affect the Corporation's business, operations, industries, financial position or future financial performance are described later in this report under the heading "Item 1A. Risk Factors." The Corporation cautions readers not to place undue reliance on any forward-looking statement which speaks only as of the date made and to recognize forward-looking statements are predictions of future results, which may not occur as anticipated. Actual results could differ materially from those anticipated in the forward-looking statements and from historical results due to the risks and uncertainties described elsewhere in this report, including under the heading "Item 1A. Risk Factors," as well as others that the Corporation may consider immaterial or does not anticipate at this time. The risks and uncertainties described in this report, including those under the heading "Item 1A. Risk Factors," are not exclusive and further information concerning the Corporation, including factors that potentially could materially affect the Corporation's financial results or condition, may emerge from time to time.

The Corporation assumes no obligation to update, amend or clarify forward-looking statements, whether as a result of new information, future events or otherwise, except as required by applicable law. The Corporation advises you, however, to consult any further disclosures made on related subjects in future quarterly reports on Form 10-Q and current reports on Form 8-K filed with or furnished to the SEC.

## **ITEM 1A. RISK FACTORS**

The following risk factors and other information included in this report should be carefully considered. If any of the following risks actually occur, our business, operating results, cash flows and financial condition could be materially adversely affected.

*Unfavorable economic and market conditions could reduce our sales and profitability and as a result, our operating results may be adversely affected.*

Over the past few years, economic conditions have deteriorated significantly in the U.S. and many of the countries and regions in which we do business, and, despite the beginning of the recovery in the U.S. and elsewhere, remain challenging for the foreseeable future. The recent downturns in the U.S. economy and in international markets have had, and may continue to have, a significant adverse impact on demand for our products. General business and economic conditions that could affect us include short-term and long-term interest rates, unemployment, inflation, fluctuations in debt and equity capital markets, limited availability of consumer financing and weak credit markets, the strength of the U.S. economy and the local economies in which we operate.

There could be a number of effects from these economic developments on our business, including: reduced demand for products; insolvency of our dealers, resulting in increased provisions for credit losses; insolvency of our key suppliers resulting in product delays; inability of customers to obtain credit to finance purchases of our products; decreased customer demand, including order delays or cancellations; and counter-party failures negatively impacting our treasury operations.

In addition, the current weak recovery and general uncertain economic conditions in the U.S. make it increasingly difficult for us, our customers and our suppliers to accurately forecast future product demand trends, which could cause us to incur excess costs. Additionally, this forecasting difficulty could cause a shortage of products, labor or materials used in our products that could result in an inability to satisfy demand for our products and a loss of market share.

*We may need to take additional impairment charges related to goodwill and indefinite-lived intangible assets, which would adversely affect our results of operations.*

Goodwill and other acquired intangible assets with indefinite lives are not amortized but are annually tested for impairment, and when an event occurs or circumstances change such that it is reasonably possible an impairment may exist. We test for impairment annually during the fourth quarter of the year and whenever indicators of impairment exist. We test goodwill for impairment by first comparing the carrying value of net assets to the fair value of the reporting unit. If the fair value is determined to be less than carrying value, a second step is performed to determine the implied fair value of goodwill associated with the reporting unit. If the carrying value of goodwill exceeds the implied fair value of goodwill, such excess represents the amount of goodwill impairment, and accordingly, such impairment is recognized.

We estimate the fair values of the reporting units using discounted cash flows. Forecasts of future cash flows are based on our best estimate of longer term, broad market trends. We combine this trend data with estimates of current economic conditions in the U.S., competitor behavior, the mix of product sales, commodity costs, wage rates, the level of manufacturing capacity and the pricing environment. In addition, estimates of fair value are impacted by estimates of the market-participant-derived weighted average cost of capital. Changes in these forecasts could significantly change the amount of impairment recorded, if any.

*We operate in a highly competitive environment and, as a result, we may not always be successful.*

Both the office furniture and hearth products industries are highly competitive, with a significant number of competitors in both industries offering similar products. While competitive factors vary geographically and between differing sales situations, typical factors for both industries include: price; delivery and service; product design and features; product quality; strength of dealers and other distributors; and relationships with customers and key influencers, such as architects, designers, home-builders and facility managers. Our principal competitors in the office furniture industry include The Global Group, Haworth, Inc., Kimball International, Inc., Steelcase Inc., Herman Miller, Inc., Teknion Corporation, KI and Knoll, Inc. Our principal competitors in the hearth products industry include Travis Industries Inc., Lennox International Inc., Monessen Hearth Systems Co., FMI Products, LLC, Wolf Steel Ltd. (Napoleon) and FPI Fireplace Products International Ltd. (Regency). In both industries, most of our top competitors have an installed base of products that can be a source of significant future sales through repeat and expansion orders. These competitors manufacture products with strong acceptance in the marketplace and are capable of developing products that have a competitive advantage over our products.

Our continued success will depend on many factors, including our ability to continue to manufacture and market high quality, high performance products at competitive prices and our ability to adapt our business model to effectively compete in the highly competitive environments of both the office furniture and hearth products industries. Our success is also subject to our ability to sustain and grow our positive brand reputation and recognition among existing and potential customers and use our brands and trademarks effectively in entering new markets.

In both the office furniture and hearth products industries, we also face significant price competition from our competitors and from new market entrants who primarily manufacture and source products from lower cost countries. Such price competition impacts our ability to implement price increases or, in some cases, even maintain prices, which could lower our profit margins. In addition, we may not be able to maintain or raise the prices of our products in response to rising raw material prices and other inflationary pressures.

*The concentration of our customer base, changes in demand and order patterns from our customers, as well as the increased purchasing power of such customers, could adversely affect our business, operating results or financial condition.*

We sell our products through multiple distribution channels. These distribution channels have been consolidating in the past several years and may continue to consolidate in the future. Such consolidation may result in a greater proportion of our sales being concentrated in fewer customers. The increased purchasing power exercised by larger customers may adversely affect the prices at which we can successfully offer our products. As a result of this consolidation, changes in the purchase patterns or the loss of a single customer may have a greater impact on our business, operating results or financial condition than such events would have had prior to such consolidation.

*The growth in sales of private-label products by some of our largest office furniture customers may reduce our revenue and adversely affect our business, operating results or financial condition.*

Private-label products are products sold under the name of the distributor or retailer, but manufactured by another party. Some of our largest customers have aggressive private-label initiatives to increase sales of office furniture. If successful, they may reduce our revenue and inhibit our ability to raise prices and may, in some cases, even force us to lower prices, which could result in an adverse effect on our business, operating results or financial condition.

*Increases in basic commodity, raw material and component costs, as well as disruptions to the supply of such basic commodities, raw materials and components, could adversely affect our profitability.*

Fluctuations in the price, availability and quality of the commodities, raw materials and components used by us in manufacturing could have an adverse effect on our costs of sales, profitability and our ability to meet customers' demand. We source commodities, raw materials and components from low-cost, international suppliers for both our office furniture and hearth products. From both domestic and international suppliers, the cost, quality and availability of commodities, raw materials and components, including steel, our largest raw material category, have been significantly affected in recent years by, among other things, changes in global supply and demand, changes in laws and regulations (including tariffs and duties), changes in exchange rates and worldwide price levels, natural disasters, labor disputes, terrorism and political unrest or instability. These factors could lead to further price increases or supply interruptions in the future. Our profit margins could be adversely affected if commodity, raw material and component costs remain high or escalate further, and we are either unable to offset such costs through strategic sourcing initiatives and continuous improvement programs or, as a result of competitive market dynamics, unable to pass along a portion of the higher costs to our customers.

*We are affected by the cost of energy, and increases in energy prices could adversely affect our gross margins and profitability.*

Our gross margins and the profitability of our business operations are sensitive to the cost of energy because it is reflected in our cost of transportation, petroleum-based materials like plastics and operation of our manufacturing facilities. If the costs of petroleum-based products, operating our manufacturing facilities or transportation increase, it could adversely affect our gross margins and profitability.

*We may not be successful in implementing and managing the risks inherent in our growth strategy.*

As a part of our growth strategy, we seek to increase sales and market share by introducing new products, further enhancing our existing line of products and continuing to pursue complementary acquisitions. This strategy depends on our ability to increase sales through our existing customer network, principally dealers, wholesalers and retailers. Furthermore, the ability to effectuate and manage profitable growth will depend on our ability to contain costs, including costs associated with increased manufacturing, sales and marketing efforts, freight utilization, warehouse capacity, product development and acquisition efforts.

*Our efforts to introduce new products that meet customer and workplace/home requirements may not be successful, which could limit our sales growth or cause our sales to decline.*

To keep pace with market trends in both the office furniture and hearth products industries, we must periodically introduce new products. Such trends include changes in workplace and home design and increases in the use of technology and evolving regulatory and industry requirements, including environmental, health, safety and similar standards for the workplace and home and for product performance. The introduction of new products in both industries requires the coordination of the design, manufacturing and marketing of such products, which may be affected by factors beyond our control. The design and engineering of certain of our new products can take up to a year or more, and further time may be required to achieve client acceptance. In addition, we may face difficulties in introducing new products if we cannot successfully align ourselves with independent architects, home-builders and designers who are able to design, in a timely manner, high quality products consistent with our image. Accordingly, the launch of any particular product may be later or less successful than we originally anticipated. Difficulties or delays in introducing new products or lack of customer acceptance of new products could limit our

sales growth or cause our sales to decline and may result in an adverse effect on our business, operating results or financial condition.

*We intend to grow our business through additional acquisitions, alliances and joint venture arrangements, which could adversely affect our business, operating results or financial condition.*

One of our growth strategies is to supplement our internal growth through acquisitions of, and alliances and joint venture arrangements with, businesses with technologies or products that complement or augment our existing products or distribution or add new products or distribution to our business. The benefits of an acquisition, alliance or joint venture may take more time than expected to develop or integrate into our operations, and we cannot guarantee any completed or future acquisitions, alliances or joint ventures will in fact produce any benefits. In addition, acquisitions, alliances and joint ventures involve a number of risks, including, without limitation:

- diversion of management's attention;
- difficulties in assimilating the operations and products of an acquired business or in realizing projected efficiencies, cost savings and revenue synergies;
- potential loss of key employees or customers of the acquired businesses or adverse effects on existing business relationships with suppliers and customers;
- adverse impact on overall profitability if acquired businesses do not achieve the financial results projected in our valuation models;
- reallocation of amounts of capital from other operating initiatives or an increase in our leverage and debt service requirements to pay the acquisition purchase prices, which could in turn restrict our ability to access additional capital when needed or to pursue other important elements of our business strategy;
- inaccurate assessment of undisclosed, contingent or other liabilities or problems and unanticipated costs associated with the acquisition; and
- incorrect estimates made in accounting for acquisitions, incurrence of non-recurring charges and write-off of significant amounts of goodwill that could adversely affect our operating results.

Our ability to grow through acquisitions will depend, in part, on the availability of suitable acquisition candidates at an acceptable price, our ability to compete effectively for these acquisition candidates and the availability of capital to complete such acquisitions. These risks could be heightened if we complete several acquisitions within a relatively short period of time. In addition, there can be no assurance we will be able to continue to identify attractive opportunities or enter into any such transactions with acceptable terms in the future. If an acquisition is completed, there can be no assurance we will be able to successfully integrate the acquired entity into our operations or that we will achieve sales and profitability that justify our investment in such businesses. Any potential acquisition may not be successful and could adversely affect our business, operating results or financial condition.

*We are subject to extensive environmental regulation and have exposure to potential environmental liabilities.*

The past and present operation and ownership by us of manufacturing facilities and real property are subject to extensive and changing federal, state and local environmental laws and regulations, including those relating to discharges in air, water and land, the handling and disposal of solid and hazardous waste and the remediation of contamination associated with releases of hazardous substances. Compliance with environmental regulations has not had a material effect on our capital expenditures, earnings or competitive position to date; however, compliance with current laws or more stringent laws or regulations which may be imposed on us in the future, stricter interpretation of existing laws or discoveries of contamination at our real property sites which occurred prior to our ownership or the advent of environmental regulation may require us to incur additional expenditures in the future, some of which may be material.

*The existence of various unfavorable macroeconomic and industry factors for a prolonged period could adversely affect our business, operating results or financial condition.*

Office furniture industry revenues are impacted by a variety of macroeconomic factors such as service-sector employment levels, corporate profits, commercial construction and office vacancy rates. Industry factors, such as corporate restructuring, technology changes, corporate relocations, health and safety concerns, including ergonomic considerations, and the globalization of companies also influence office furniture industry revenues.

Hearth products industry revenues are impacted by a variety of macroeconomic factors as well, including housing starts, overall employment levels, interest rates, consumer confidence, energy costs, disposable income and changing demographics. Industry factors, such as technology changes, health and safety concerns and environmental regulation, including indoor air quality

standards, also influence hearth products industry revenues. The U.S. homebuilding industry is currently experiencing an unprecedented downturn, the duration and ultimate severity of which are still uncertain. Further deterioration of the economic conditions in the homebuilding industry and the hearth products market could further decrease demand for our hearth products and have additional adverse effects on our operating results.

*Increasing healthcare costs could adversely affect our business, operating results and financial condition.*

We provide healthcare benefits to the majority of our members. Healthcare costs have continued to rise over time and could adversely affect our business, operating results and financial condition.

*Our inability to improve the quality/capability of our network of independent dealers or the loss of a significant number of such dealers could adversely affect our business, operating results or financial condition.*

In both the office furniture and hearth products industries, we rely in large part on a network of independent dealers to market our products to customers. We also rely upon these dealers to provide a variety of important specification, installation and after-market services to our customers. Our dealers may terminate their relationships with us at any time and for any reason. The loss or termination of a significant number of dealer relationships could cause difficulties for us in marketing and distributing our products, resulting in a decline in our sales, which may adversely affect our business, operating results or financial condition.

*Our international operations expose us to risks related to conducting business in multiple jurisdictions outside the United States.*

We primarily sell our products and report our financial results in U.S. dollars; however, we have increasingly been conducting business in countries outside the United States, which exposes us to fluctuations in foreign currency exchange rates. Paying our expenses in other currencies can result in a significant increase or decrease in the amount of those expenses in terms of U.S. dollars, which may affect our profits. In the future, any foreign currency appreciation relative to the U.S. dollar would increase our expenses that are denominated in that currency. Additionally, as we report currency in the U.S. dollar, our financial position is affected by the strength of the currencies in countries where we have operations relative to the strength of the U.S. dollar.

We periodically review our foreign currency exposure and evaluate whether we should enter into hedging transactions.

Our international sales and operations are subject to a number of additional risks, including, without limitation:

- social and political turmoil, official corruption and civil and labor unrest;
- restrictive government actions, such as the imposition of trade quotas and tariffs and restrictions on transfers of funds;
- changes in labor laws and regulations affecting our ability to hire, retain or dismiss employees;
- the need to comply with multiple and potentially conflicting laws and regulations, including environmental laws and regulations;
- preference for locally branded products and laws and business practices favoring local competition;
- less effective protection of intellectual property;
- unfavorable business conditions or economic instability in any particular country or region; and
- difficulty in obtaining distribution and support.

*Restrictions imposed by the terms of our credit facility and note purchase agreement may limit our operating and financial flexibility.*

Our credit facility and note purchase agreement, dated as of April 6, 2006, pursuant to which we issued \$150 million of senior, unsecured notes designated as Series 2006-A Senior Notes, limit our ability to finance operations, service debt or engage in other business activities that may be in our interest. Specifically, our credit facility restricts our ability to incur additional indebtedness, create or incur certain liens with respect to any of our properties or assets, engage in lines of business substantially different than those currently conducted by us, sell, lease, license or dispose of any of our assets, enter into certain transactions with affiliates, make certain restricted payments or take certain restricted actions and enter into certain sale-leaseback arrangements. Our note purchase agreement contains customary restrictive covenants that, among other things, place limits on our ability to incur liens on assets, incur additional debt, transfer or sell our assets, merge or consolidate with other persons or enter into material transactions with affiliates. Our credit facility and note purchase agreement also require us to maintain certain financial covenants.

Our failure to comply with the obligations under our credit facility may result in an event of default, which, if not cured or waived, may cause accelerated repayment of the indebtedness under the credit facility and could result in a cross default under our note purchase agreement. We cannot be certain we will have sufficient funds available to pay any accelerated repayments or we will have the ability to refinance accelerated repayments on terms favorable to us or at all.

*Costs related to product defects, including product liability costs, could adversely affect our profitability.*

We incur various expenses related to product defects, including product warranty costs, product recall and retrofit costs and product liability costs. These expenses relative to product sales vary and could increase. We maintain reserves for product defect-related costs based on estimates and our knowledge of circumstances that indicate the need for such reserves. We cannot, however, be certain these reserves will be adequate to cover actual product defect-related claims in the future. We also purchase insurance coverage to reduce our exposure to significant levels of product liability claims and maintain a reserve for our self-insured losses based upon estimates of the aggregate liability using claims experience and actuarial assumptions. Incorrect estimates or any significant increase in the rate of our product defect expenses could have a material adverse effect on operations.

*We may require additional capital in the future, which may not be available or may be available only on unfavorable terms.*

Our capital requirements depend on many factors, including capital improvements, tooling, new product development and acquisitions. To the extent our existing capital is insufficient to meet these requirements and cover any losses, we may need to raise additional funds through financings or curtail our growth and reduce our assets. Our ability to generate cash depends on economic, financial, competitive, legislative, regulatory and other factors that may be beyond our control. Future borrowings or financings may not be available to us under our credit facility or otherwise in an amount sufficient to enable us to pay our debt or meet our liquidity needs.

Any equity or debt financing, if available at all, could have terms that are not favorable to us. In addition, financings could result in dilution to our shareholders or the securities may have rights, preferences and privileges that are senior to those of our common stock. If our need for capital arises because of significant losses, the occurrence of these losses may make it more difficult for us to raise the necessary capital.

*Our relationship with the U.S. government and various state and local governments is subject to uncertain future funding levels and federal, state and local procurement laws and is governed by restrictive contract terms; any of these factors could limit current or future business.*

We derive a significant portion of our revenue from sales to various U.S. federal, state and local government agencies and departments. Our ability to compete successfully for and retain business with the U.S. government, as well as with state and local governments, is highly dependent on cost-effective performance. Our government business is highly sensitive to changes in procurement laws; national, international, state and local public priorities; and budgets at all levels of government.

Our contracts with these government entities are subject to various statutes and regulations that apply to companies doing business with the government. The U.S. government as well as state and local governments can typically terminate or modify their contracts with us either for their convenience or if we default by failing to perform under the terms of the applicable contract. A termination arising out of our default could expose us to liability and impede our ability to compete in the future for contracts and orders with agencies and departments at all levels of government. Moreover, we are subject to investigation and audit for compliance with the requirements governing government contracts, including requirements related to procurement integrity, export controls, employment practices, the accuracy of records and reporting of costs. If we were found to not be a responsible supplier or to have committed fraud or certain criminal offenses, we could be suspended or debarred from all further federal, state or local government contracting.

*Changes in government regulation and increased focus on enforcement may significantly increase our operating costs.*

The federal government has a broad agenda of potential legislative and regulatory changes, which if enacted, could significantly impact our profitability by imposing on us additional costs that most likely could not be recovered by increased pricing. These changes include, without limitation, proposed legislation or pending regulations relating to:

- universal healthcare and healthcare reform;
- increasing our effective tax rate;
- union organizing activities;

- energy costs in manufacturing; and
- carbon dioxide and particulate emissions.

In addition, the federal government has increased its focus on enforcement under a wide range of laws and regulations impacting our business, particularly in the following areas:

- antitrust and competition;
- foreign corrupt practices;
- government contracting;
- securities and public company reporting;
- labor and employment practices;
- fraud and abuse; and
- tax reporting.

Should we become the target of a government investigation or enforcement action, we could incur significant costs and suffer damage to our reputation which could adversely impact our business, operating results or financial condition.

*Natural disasters, acts of God, force majeure events or other catastrophic events may impact the Corporation's production capacity and, in turn, negatively impact profitability.*

Natural disasters, acts of God, force majeure events or other catastrophic events, including severe weather, military action, terrorist attacks, power interruptions and fires, could disrupt operations and likewise the ability to produce or deliver our products. Members are an integral part of our business and events such as an epidemic could reduce the availability of members reporting for work. In the event we experience a temporary or permanent interruption in our ability to produce or deliver product, revenues could be reduced, and business could be materially adversely affected. In addition, any continuing disruption in our computer system could adversely affect our ability to receive and process customers orders, manufacture products and ship products on a timely basis and could adversely affect relations with customers, potentially resulting in reduction in orders from customers or loss of customers. We maintain insurance to help protect us from costs relating to some of these events, but it may not be sufficient or paid in a timely manner in the event we suffer such an event.

*Our business is subject to a number of other miscellaneous risks that may adversely affect our business, operating results or financial condition.*

Other miscellaneous risks include, without limitation:

- reduced demand for our storage products caused by changes in office technology, including the change from paper record storage to electronic record storage;
- our ability to realize cost savings and productivity improvements from our cost containment, business simplification, manufacturing consolidation and logistical realignment initiatives;
- volatility in the market price and trading volume of equity securities may adversely affect the market price for our common stock;
- changes in labor laws and regulations may affect our ability to hire, retain or dismiss members and the cost and structure of our corporate compliance practices;
- changes in securities laws, SEC rules or NYSE listing standards may increase governmental and non-governmental organization oversight of our business, dictate changes in some of our corporate governance, securities disclosure and corporate compliance practices and cause our legal and financial accounting costs to increase;
- our ability to protect our intellectual property, including trade secrets and key business operations data;
- labor or other manufacturing inefficiencies due to items such as new product introductions, a new operating system or turnover in personnel;
- our ability to effectively manage working capital and maintain our effective tax rate;
- future impairment of assets such as facilities or equipment;



- our ability to successfully implement information technology solutions;
- potential claims by third parties that we infringed upon their intellectual property rights;
- our ability to realize financial benefits from our repurchases of common stock;
- executive fraud and misconduct;
- our insurance may not adequately (1) insulate us from expenses for product defects and the negligent acts and omissions of our members and agents and (2) compensate us for damages to our facilities and equipment and loss of business; and
- our ability to retain our experienced management team and recruit other key personnel.

#### **ITEM 1B. UNRESOLVED STAFF COMMENTS**

None.

#### **ITEM 2. PROPERTIES**

The Corporation maintains its corporate headquarters in Muscatine, Iowa, and conducts operations at locations throughout the United States, Canada, China, Hong Kong and Taiwan, which house manufacturing, distribution and retail operations and offices totaling an aggregate of approximately 9.5 million square feet. Of this total, approximately 2.1 million square feet are leased.

Although the plants are of varying ages, the Corporation believes they are well maintained, equipped with modern and efficient equipment, in good operating condition and suitable for the purposes for which they are being used. The Corporation has sufficient capacity to increase output at most locations by increasing the use of overtime or the number of production shifts employed.

The Corporation's principal manufacturing and distribution facilities (200,000 square feet in size or larger) are as follows:

<b>Location</b>	<b>Approximate Square Feet</b>	<b>Owned or Leased</b>	<b>Description of Use</b>
Cedartown, Georgia	550,000	Owned	Manufacturing nonwood casegoods office furniture
Dongguan, China	1,007,716	Owned	Manufacturing wood and nonwood casegoods and seating office furniture (1)
Florence, Alabama	304,365	Owned	Manufacturing wood and nonwood casegoods office furniture
Hickory, North Carolina	206,316	Owned	Manufacturing wood casegoods and seating office furniture
Lake City, Minnesota	241,500	Owned	Manufacturing metal prefabricated fireplaces
Lithia Springs, Georgia	585,000	Leased	Warehousing office furniture
Milan, Illinois	272,900	Leased	Warehousing office furniture
Mt. Pleasant, Iowa	288,006	Owned	Manufacturing metal prefabricated fireplaces (1)
Muscatine, Iowa	272,900	Owned	Manufacturing nonwood casegoods office furniture
Muscatine, Iowa	578,284	Owned	Warehousing office furniture
Muscatine, Iowa	236,100	Owned	Manufacturing nonwood casegoods office furniture
Muscatine, Iowa	636,250	Owned	Manufacturing nonwood casegoods and systems office furniture (1)
Muscatine, Iowa	237,800	Owned	Manufacturing nonwood seating office furniture
Orleans, Indiana	1,196,946	Owned	Manufacturing wood casegoods and seating office furniture (1)
Wayland, New York	716,484	Owned	Manufacturing wood casegoods and seating office furniture (1)

*(1) Also includes a regional warehouse/distribution center*

Other Corporation facilities, under 200,000 square feet in size, are located in various communities throughout the United States, Canada, China, Hong Kong and Taiwan. These facilities total approximately 2.3 million square feet with approximately 1.3 million square feet used for the manufacture and distribution of office furniture and approximately .9 million square feet for hearth products. Of this total, approximately 1.3 million square feet are leased. The Corporation also leases sales showroom space in office furniture market centers in several major metropolitan areas.

There are no major encumbrances on Corporation-owned properties. Refer to Property, Plant, and Equipment in the Notes to Consolidated Financial Statements for related cost, accumulated depreciation and net book value data.

### **ITEM 3. LEGAL PROCEEDINGS**

The Corporation is involved in various kinds of disputes and legal proceedings that have arisen in the ordinary course of its business, including pending litigation, environmental remediation, taxes and other claims. It is the Corporation's opinion, after consultation with legal counsel, that liabilities, if any, resulting from these matters are not expected to have a material adverse effect on the Corporation's financial condition, although such matters could have a material effect on the Corporation's quarterly or annual operating results and cash flows when resolved in a future period.

**TABLE I**  
**EXECUTIVE OFFICERS OF THE REGISTRANT**  
**January 1, 2011**

<u>Name</u>	<u>Age</u>	<u>Family Relationship</u>	<u>Position</u>	<u>Position Held Since</u>	<u>Other Business Experience During Past Five Years</u>
Stan A. Askren	50	None	Chairman of the Board Chief Executive Officer President Director	2004 2004 2003 2003	
Steven M. Bradford	53	None	Vice President, General Counsel and Secretary	2008	Vice President and Regional General Counsel for The Americas, Imperial Chemical Industries PLC (2003-08); General Counsel, North America, ICI Paints (2004-08); President ICI Group Services (2004-08)
Gary L. Carlson	60	None	Vice President, Member and Community Relations	2007	President and CEO, Greater Muscatine Chamber of Commerce and Industry (2003-07)
Bradley D. Determan	49	None	Executive Vice President President, Hearth & Home Technologies Inc.*	2005 2003	
Jerald K. Dittmer	53	None	Executive Vice President President, The HON Company*	2008	Vice President and Chief Financial Officer (2001-08)
Tamara S. Feldman	50	None	Vice President, Financial Reporting	2001	
Jeffrey D. Lorenger	45	None	Executive Vice President President, Allsteel, Inc.*	2010 2008	Vice President, General Counsel and Secretary (2005-2008) HNI Corporation; Vice President, Sales and Marketing (2007-2008) The HON Company
Kelly J. McGriff	44	None	Treasurer and Vice President, Investor Relations	2009	Director, Marketing Services (2008-09); Manager, Bids and Marketing (2007-08); and Commercial Controller (2005-07), The HON Company
Marco V. Molinari	51	None	Executive Vice President President, HNI International Inc.*	2006 2003	Vice President, HON Products, The HON Company (2004-06)
Alan R. Moorhead	59	None	Vice President, Internal Audit	2008	Director, Internal Audit (2006-08) HNI Corporation; Vice President, Audit Director, Assurant, Inc. (2001-06)
Kurt A. Tjaden	47	None	Vice President and Chief Financial Officer	2008	Vice President and Chief Financial Officer, Asia, Whirlpool Corporation (2006-08); Vice President and Chief Financial Officer, Pure Fishing, LLC (2001-06)

\*HNI Corporation subsidiary

## PART II

### **ITEM 5. MARKET FOR REGISTRANT'S COMMON EQUITY, RELATED STOCKHOLDER MATTERS, AND ISSUER PURCHASES OF EQUITY SECURITIES**

The Corporation's common stock is listed for trading on the New York Stock Exchange (NYSE), trading symbol HNI. As of year-end 2010, the Corporation had 7,866 stockholders of record.

Wells Fargo Shareowner Services, St. Paul, Minnesota, serves as the Corporation's transfer agent and registrar of its common stock. Shareholders may report a change of address or make inquiries by writing or calling: Wells Fargo Shareowner Services, P.O. Box 64874, St. Paul, MN 55164-0874 or telephone 800/468-9716.

Information regarding historical sale prices of and dividends paid on the Corporation's common stock is presented in the Investor Information section which follows the Notes to Consolidated Financial Statements filed as part of this report.

The Corporation expects to continue its policy of paying regular quarterly cash dividends. Dividends have been paid each quarter since the Corporation paid its first dividend in 1955. The average dividend payout percentage for the most recent three-year period has been 72% of prior year earnings. Future dividends are dependent on future earnings, capital requirements and the Corporation's financial condition, and are declared in the sole discretion of the Corporation's Board of Directors.

#### Issuer Purchases of Equity Securities:

The following is a summary of share repurchase activity during the quarter ended January 1, 2011.

<u>Period</u>	<u>Total Number of Shares (or Units) Purchased</u>	<u>Average Price Paid per Share or Unit</u>	<u>Total Number of Shares (or Units) Purchased as Part of Publicly Announced Plans or Programs</u>	<u>Maximum Number (or Approximate Dollar Value) of Shares (or Units) that May Yet Be Purchased Under the Plans or Programs</u>
10/03/10 – 10/30/10	—		—	\$ 145,806,616
10/31/10 – 11/27/10	—		—	\$ 145,806,616
11/28/10 – 01/01/11	368	30.14	368	\$ 145,795,524
Total	368		368	

The Corporation repurchases shares under previously announced plans authorized by the Board as follows:

- Plan announced November 9, 2007, providing share repurchase authorization of \$200,000,000 with no specific expiration date.
- No repurchase plans expired or were terminated during the fourth quarter of fiscal 2010, nor do any plans exist under which the Corporation does not intend to make further purchases.

**ITEM 6. SELECTED FINANCIAL DATA — FIVE-YEAR SUMMARY**

	2010	2009	2008	2007	2006
<b>Per Common Share Data (Basic and Dilutive)</b>					
Income (Loss) from Continuing Operations Attributable to Parent Company – basic	\$ 0.66	\$ (0.04)	\$ 1.14	\$ 2.65	\$ 2.60
Income (Loss) from Continuing Operations Attributable to Parent Company – diluted	0.65	(0.04)	1.13	2.63	2.58
Net Income (Loss) Attributable to Parent Company – basic	0.60	(0.14)	1.03	2.58	2.46
Net Income (Loss) Attributable to Parent Company – diluted	0.59	(0.14)	1.02	2.57	2.45
Cash Dividends	0.86	0.86	0.86	0.78	0.72
Book Value – year-end	9.10	9.30	10.13	10.24	10.35
Net Working Capital – year-end	1.04	1.33	1.00	2.33	3.04
<b>Operating Results (Thousands of Dollars)</b>					
Net Sales	\$ 1,686,728	\$ 1,623,327	\$ 2,429,631	\$ 2,506,669	\$ 2,614,326
Gross Profit as a % of Net Sales	34.7%	34.7 %	33.7%	35.7%	34.9%
Interest Expense	\$ 11,903	\$ 12,080	\$ 16,865	\$ 18,161	\$ 14,323
Income (Loss) from Continuing Operations	29,681	(1,598)	50,706	123,482	130,118
Income (Loss) from Continuing Operations as a % of Net Sales	1.8%	(0.1)%	2.1%	4.9%	5.0%
Discontinued Operations <sup>(a)</sup>	\$ (2,558)	\$ (4,661)	\$ (5,099)	\$ (3,522)	\$ (6,916)
Net Income (Loss) Attributable to Parent Company	26,941	(6,442)	45,450	120,378	123,375
Net Income (Loss) Attributable to Parent Company as a % of Net Sales	1.6%	(0.4)%	1.9%	4.8%	4.7%
Cash Dividends	\$ 38,737	\$ 38,667	\$ 38,095	\$ 36,408	\$ 36,028
% Return on Average Shareholders' Equity	6.5%	(1.5)%	10.0%	25.2%	22.6%
Depreciation and Amortization	\$ 58,630	\$ 74,867	\$ 70,155	\$ 68,173	\$ 69,503
<b>Financial Position (Thousands of Dollars)</b>					
Current Assets	\$ 408,161	\$ 360,271	\$ 417,841	\$ 489,072	\$ 504,174
Current Liabilities	361,351	300,142	373,625	384,461	358,542
Working Capital	46,810	60,129	44,216	104,611	145,632
Current Ratio	1.13	1.20	1.12	1.27	1.41
Total Assets	\$ 997,880	\$ 994,326	\$ 1,165,629	\$ 1,206,976	\$ 1,226,359
% Return on Beginning Assets Employed	5.8%	0.7 %	7.7%	16.3%	18.2%
Long-Term Debt and Capital Lease Obligations	\$ 150,111	\$ 200,000	\$ 267,343	\$ 281,091	\$ 285,974
Shareholders' Equity	407,985	419,284	448,833	458,908	495,919
<b>Current Share Data</b>					
Number of Shares Outstanding at Year-End	44,840,701	45,093,379	44,324,409	44,834,519	47,905,351
Weighted-Average Shares Outstanding During Year – basic	44,993,934	44,888,809	44,309,765	46,684,774	50,059,443
Weighted-Average Shares Outstanding During Year – diluted	45,808,704	44,888,809	44,433,945	46,925,161	50,374,758
Number of Shareholders of Record at Year-End	7,866	8,257	8,274	7,625	7,475
<b>Other Operational Data</b>					
Capital Expenditures (Thousands of Dollars)	\$ 25,683	\$ 16,017	\$ 70,083	\$ 58,568	\$ 58,921
Members (Employees) at Year-End	8,470	8,748	12,241(a)	13,271(a)	14,170(a)

(a) Includes acquisitions completed during the fiscal year.

## **ITEM 7. MANAGEMENT'S DISCUSSION AND ANALYSIS OF FINANCIAL CONDITION AND RESULTS OF OPERATIONS**

The following discussion of the Corporation's historical results of operations and of its liquidity and capital resources should be read in conjunction with the Consolidated Financial Statements of the Corporation and related notes. Statements that are not historical are forward-looking and involve risks and uncertainties, including those discussed under Item 1A Risk Factors and elsewhere in this report.

### **Overview**

The Corporation has two reportable segments: office furniture and hearth products. The Corporation is the second largest office furniture manufacturer in the world and the nation's leading manufacturer and marketer of gas and wood burning fireplaces. The Corporation utilizes its split and focus, decentralized business model to deliver value to its customers with various brands and selling models. The Corporation is focused on growing its existing businesses while seeking out and developing new opportunities for growth.

Primary factors impacting the Corporation's businesses, small business and CEO confidence and business spending improved, while employment and new home construction stabilized. Momentum continued to build through the end of the year in the office furniture contract channel. The supplies-driven channel of the office furniture segment reversed previous declines. The hearth business stabilized as declines in the new home construction and remodel markets slowed. The Corporation adjusted rapidly to the transitioning economy and performed well. The Corporation continued its disciplined approach to managing cost and made the decision to close an office furniture manufacturing facility and consolidate production into existing manufacturing facilities in 2010. The Corporation also remained committed to long-term profitable growth across its core businesses and increased the amount of focused investments in selling, marketing and product initiatives.

Net sales during 2010 were \$1.7 billion, an increase of 3.9 percent, compared to net sales of \$1.6 billion in 2009. The sales increase was driven by increased volume in both the supplies-driven and contract channels of the office furniture segment as well as improvement in the new construction channel of the hearth products segment.

Management is optimistic about the office furniture and hearth markets. The Corporation will continue to invest in selling, marketing and product initiatives and remain focused on improving operations and reducing cost.

### **Critical Accounting Policies and Estimates**

#### **General**

Management's Discussion and Analysis of Financial Condition and Results of Operations is based upon the Consolidated Financial Statements, prepared in accordance with Generally Accepted Accounting Principles (GAAP). The preparation of these financial statements requires management to make estimates and assumptions that affect the reported amounts of assets, liabilities, revenue and expenses, and related disclosure of contingent assets and liabilities. Management bases its estimates on historical experience and on various other assumptions that are believed to be reasonable under the circumstances, the results of which form the basis for making judgments about the carrying values of assets and liabilities that are not readily apparent from other sources. Senior management has discussed the development, selection and disclosure of these estimates with the Audit Committee of the Board. Actual results may differ from these estimates under different assumptions or conditions.

An accounting policy is deemed to be critical if it requires an accounting estimate be made based on assumptions about matters uncertain at the time the estimate is made, and if different estimates that reasonably could have been used, or changes in the accounting estimates that are reasonably likely to occur periodically, could materially impact the financial statements. Management believes the following critical accounting policies reflect its more significant estimates and assumptions used in the preparation of the Consolidated Financial Statements.

*Fiscal year-end* – The Corporation follows a 52/53-week fiscal year which ends on the Saturday nearest December 31. Fiscal year 2010 ended on January 1, 2011; 2009 ended on January 2, 2010; and 2008 ended on January 3, 2009. The financial statements for fiscal years 2010 and 2009 are on a 52-week basis; and the financial statements for fiscal year 2008 are on a 53-week basis. A 53-week year occurs approximately every sixth year.

*Revenue recognition* – Sales of office furniture and hearth products are generally recognized when title transfers and the risks and rewards of ownership have passed to customers. Typically title and risk of ownership transfer when the product is shipped. In certain circumstances, title and risk of ownership do not transfer until the goods are received by the customer or upon

installation or customer acceptance. Revenue includes freight charged to customers; related costs are included in selling and administrative expense. Rebates, discounts and other marketing program expenses directly related to the sale are recorded as a reduction to sales. Marketing program accruals require the use of management estimates and the consideration of contractual arrangements subject to interpretation. Customer sales that achieve or do not achieve certain award levels can affect the amount of such estimates, and actual results could differ from these estimates. Future market conditions may require increased incentive offerings, possibly resulting in an incremental reduction in net sales at the time the incentive is offered.

*Allowance for doubtful accounts receivable* – The allowance for doubtful accounts receivable is based on several factors, including overall customer credit quality, historical write-off experience, the length of time a receivable has been outstanding and specific account analysis that projects the ultimate collectability of the account. As such, these factors may change over time causing the Corporation to adjust the reserve level accordingly.

When the Corporation determines a customer is unlikely to pay, a charge is recorded to bad debt expense in the income statement and the allowance for doubtful accounts is increased. When the Corporation is reasonably certain the customer cannot pay, the receivable is written off by removing the accounts receivable amount and reducing the allowance for doubtful accounts accordingly.

As of January 1, 2011, there was approximately \$195 million in outstanding accounts receivable and \$5 million recorded in the allowance for doubtful accounts to cover potential future customer non-payments. However, if economic conditions were to deteriorate significantly or one of the Corporation's large customers declares bankruptcy, a larger allowance for doubtful accounts might be necessary. The allowance for doubtful accounts was approximately \$6 million at year-end 2009 and \$9 million at year-end 2008.

*Inventory valuation* – Inventories are stated at the lower of cost or market. Cost is principally determined using the last-in, first-out ("LIFO") method. The value of inventories on the LIFO basis represented about 77%, 82% and 83% of total inventories at January 1, 2011, January 2, 2010 and January 3, 2009, respectively. If the first-in, first-out ("FIFO") method had been in use, inventories would have been \$23.8 million, \$23.4 million and \$27.8 million higher than reported at January 1, 2011, January 2, 2010 and January 3, 2009, respectively.

*Long-lived assets* - The Corporation reviews long-lived assets for impairment as events or changes in circumstances occur indicating the amount of the asset reflected in the Corporation's balance sheet may not be recoverable. The Corporation compares an estimate of undiscounted cash flows produced by the asset, or the appropriate group of assets, to the carrying value to determine whether impairment exists. The estimates of future cash flows involve considerable management judgment and are based upon the Corporation's assumptions about future operating performance. The actual cash flows could differ from management's estimates due to changes in business conditions, operating performance and economic conditions. Asset impairment charges associated with the Corporation's restructuring activities are discussed in Restructuring Related and Impairment Charges in the Notes to Consolidated Financial Statements.

The Corporation's continuous focus on improving the manufacturing process tends to increase the likelihood of assets being replaced; therefore, the Corporation is regularly evaluating the expected useful lives of its equipment which can result in accelerated depreciation.

*Goodwill and other intangibles* – The Corporation evaluates its goodwill for impairment on an annual basis during the fourth quarter or whenever indicators of impairment exist. The Corporation estimates the fair value of its reporting units using various valuation techniques, with the primary technique being a discounted cash flow analysis. The Corporation has eleven reporting units within its office furniture and hearth products operating segments, of which seven contained goodwill. These reporting units constitute components for which discrete financial information is available and regularly reviewed by segment management. Determining the fair value of a reporting unit involves the use of significant estimates and assumptions. The estimate of fair value of each reporting unit is based on management's projection of revenues, gross margin, operating costs and cash flows considering historical and estimated future results, general economic and market conditions as well as the impact of planned business and operational strategies. The valuations employ present value techniques to measure fair value and consider market factors. Management believes the assumptions used for the impairment test are consistent with those utilized by a market participant in performing similar valuations of its reporting units. A separate discount rate was utilized for each reporting unit with rates ranging from 10.5% to 11.5%. Management bases its fair value estimates on assumptions it believes to be reasonable at the time, but such assumptions are subject to inherent uncertainty. Actual results may differ from those estimates. In addition, for reasonableness, the summation of all reporting units' fair values is compared to the Corporation's market capitalization.

If the fair value of the reporting unit is less than its carrying value, an additional step is required to determine the implied fair value of goodwill associated with that reporting unit. The implied fair value of goodwill is determined by first allocating the

fair value of the reporting unit to all of its assets and liabilities and then computing the excess of the reporting unit's fair value over the amounts assigned to the assets and liabilities. If the carrying value of goodwill exceeds the implied fair value of goodwill, such excess represents the amount of goodwill impairment, and, accordingly such impairment is recognized.

As a result of the review performed in the fourth quarter of 2010, the Corporation determined the fair value of its reporting units exceeds the carrying value and, therefore, no impairment of goodwill was recorded. The Corporation recorded \$7 million of impairment charges in 2009. The reporting unit impacted was an office furniture manufacturing unit acquired in 2008. The Corporation recorded \$17 million of impairment charges in 2008 for reporting units acquired in prior years. The reporting units impacted in 2008 included an office furniture services unit, dealer distribution unit and an office furniture manufacturing unit with goodwill charges of approximately \$10 million, \$5 million and \$2 million, respectively.

The significant estimates and assumptions used in estimating future cash flows of the Corporation's reporting units are based on management's view of longer term, broad market trends. Management combines this trend data with estimates of current economic conditions in the U.S., competitor behavior, the mix of product sales, commodity costs, wage rates, the level of manufacturing capacity and the pricing environment. In addition, estimates of fair value are impacted by estimates of the market participant derived weighted average cost of capital. As a reasonableness test, management also compared the market capitalization of the Corporation at January 1, 2011 to the aggregate fair value of the reporting units, resulting in a very small implied control premium of approximately five percent.

The Corporation has one reporting unit in the office furniture segment where the fair value only slightly exceeds the carrying value. There is approximately \$24 million of goodwill associated with this reporting unit. While management does not believe that impairment is probable, the performance of this business requires continued improvement in future periods to sustain its carrying value. Holding the other valuation assumptions constant, a downward shift in future operating profits of two percent across all periods from projected levels would indicate the carrying value of the business is in excess of the fair value as of the measurement date. The amount of any future impairment is dependent on the performance of the business which is dependent upon a number of variables which cannot be predicted with certainty.

Goodwill of approximately \$261 million remains on the consolidated balance sheet as of the end of fiscal 2010.

The Corporation also determines the fair value of indefinite-lived trade names on an annual basis during the fourth quarter or whenever indication of impairment exists. The Corporation performed its fiscal 2010 assessment of indefinite lived trade names during the fourth quarter. The estimate of the fair value of the trade names was based on a discounted cash flow model using inputs which included: projected revenues from management's long-term plan, assumed royalty rates that could be payable if the trade names were not owned and a discount rate. As a result of the review, the Corporation determined the fair value of all trade names exceed their carrying value. The Corporation recorded an impairment charge of \$1.1 million upon the sale of a non-core business in the office furniture segment which was included in discontinued operations in the Consolidated Statements of Income. The Corporation recorded a \$18 million and a \$5 million impairment charge for certain office furniture trade names in 2009 and 2008, respectively. A carrying value of all trade names of approximately \$41 million remains on the consolidated balance sheet at the end of fiscal 2010.

The Corporation has definite-lived intangibles that are amortized over their estimated useful lives. Impairment losses are recognized if the carrying amount of an intangible, subject to amortization, is not recoverable from expected future cash flows and its carrying amount exceeds its fair value. During the fourth quarter, the Corporation committed to a plan to sell certain hearth product retail and distribution locations and classified the group of net assets as held for sale. The Corporation recorded an impairment charge of \$4.9 million in the fourth quarter to adjust the carrying value of the net assets to fair market value less cost to sell as of the reporting date. The Corporation also recorded an impairment charge of \$2.0 million upon the sale of a non-core business in the office furniture segment which was included in discontinued operations in the Consolidated Statements of Income. Intangibles, net of amortization, of approximately \$52 million are included on the consolidated balance sheet as of the end of fiscal 2010.

Key to recoverability of goodwill, indefinite-lived intangibles and long-lived assets is the forecast of the speed and magnitude of the economic recovery and its impact on future revenues, operating margins and cash flows. Management's projection for the U.S. office furniture and domestic hearth markets and global economic conditions is inherently subject to a number of uncertain factors, such as global economic improvement, U.S housing market, credit availability and borrowing rates, and overall consumer confidence. In the near term, as management monitors the above factors, it is possible it may change the revenue and cash flow projections of certain reporting units, which may require the recording of additional asset impairment charges. There are certain reporting units that have been recently acquired and therefore have a historical cost that is closer to the current fair value. For all reporting units other than the one discussed above, the calculated fair value exceeds the carrying value by a large margin with the closest margin at greater than 18 percent of the carrying value. While the Corporation has recorded impairment



charges connected to acquisitions in the office furniture segment over the past few years, management's strategy with regards to these reporting units has not changed and the Corporation expects to receive additional value from these reporting units as the economy stabilizes.

*Self-insured reserves* – The Corporation is partially self-insured or carries high deductibles for general, auto, and product liability; workers' compensation; and certain employee health benefits. The general, auto, product, and workers' compensation liabilities are managed via a wholly-owned insurance captive; the related liabilities are included in the accompanying financial statements. As of January 1, 2011, those liabilities totaled \$26 million. The Corporation's policy is to accrue amounts in accordance with the actuarially determined liabilities. The actuarial valuations are based on historical information along with certain assumptions about future events. Changes in assumptions for such matters as the number or severity of claims, medical cost inflation, and magnitude of change in actual experience development could cause these estimates to change in the near term.

*Stock-based compensation* – The Corporation measures the cost of employee services in exchange for an award of equity instruments based on the grant-date fair value of the award and recognizes cost over the requisite service period. This resulted in a cost of approximately \$6.6 million in 2010, \$3.8 million in 2009 and \$1.6 million in 2008. The decrease in cost in 2008 was due to a true-up adjustment to estimated forfeitures based on current year events.

*Income taxes* – Deferred income taxes are provided for the temporary differences between the financial reporting basis and the tax basis of the Corporation's assets and liabilities. The Corporation provides for taxes that may be payable if undistributed earnings of overseas subsidiaries were to be remitted to the United States, except for those earnings that it considers to be permanently reinvested.

### **Recent Accounting Pronouncements**

In December 2007, the FASB issued new guidance which requires a noncontrolling interest in a subsidiary to be reported as equity and the amount of consolidated net income specifically attributable to the noncontrolling interest be identified in the consolidated financial statements. It also requires consistency in the manner of reporting changes in the parent's ownership interest and requires fair value measurement of any noncontrolling equity investment retained in a deconsolidation. The Corporation adopted the guidance January 4, 2009, the beginning of fiscal 2009. As a result of the adoption, the Corporation has reported noncontrolling interests as a component of equity in its Consolidated Balance Sheets and the net income or loss attributable to noncontrolling interests has been separately identified in its Consolidated Statements of Income. The prior periods presented have also been reclassified to conform to the current classification requirements.

In March 2008, the FASB expanded the disclosure requirements for derivative instruments and hedging activities with the intent to provide users of financial statements with an enhanced understanding of an entity's derivative activity. The Corporation adopted the new guidance as of January 4, 2009.

In June 2009, the FASB issued guidance that identifies the sources of accounting principles and the framework for selecting principles used in the preparation of financial statements of nongovernmental entities that are presented in conformity with US GAAP (the GAAP hierarchy). The Corporation adopted the new guidance beginning October 3, 2009. This guidance had no impact on the Corporation's financial statements.

## Results of Operations

The following table sets forth the percentage of consolidated net sales represented by certain items reflected in the Corporation's Consolidated Statements of Income for the periods indicated.

Fiscal	2010	2009	2008
Net Sales	100.0%	100.0%	100.0 %
Cost of products sold	65.3	65.3	66.3
Gross profit	34.7	34.7	33.7
Selling and administrative expenses	30.7	31.6	29.2
Restructuring related charges	0.6	2.5	0.7
Operating income	3.4	0.5	3.8
Interest income (expense) net	(0.7)	(0.7)	(0.6)
Income (loss) from continuing operations before income taxes	2.8	(0.2)	3.2
Income taxes	1.0	(0.1)	1.1
Net income attributable to the noncontrolling interest	0.0	0.0	0.0
Income (loss) from continuing operations attributable to HNI Corporation	1.7%	(0.1%)	2.1 %

### Net Sales

Net sales during 2010 were \$1.7 billion, an increase of 3.9 percent, compared to net sales of \$1.6 billion in 2009. Increased volume in both the supplies-driven and contract channels of the office furniture segment was partially offset by lower price realization. The hearth products segment experienced better price realization partially offset by lower volume. Net sales during 2009 were \$1.6 billion, a decrease of 33.2 percent, compared to net sales of \$2.4 billion in 2008. Acquisitions contributed \$10 million or 0.4 percentage points of sales in 2009. Higher price realization of \$83 million was offset by significant weakness in both the supplies-driven and contract channels of the office furniture segment and lower volume in the hearth products segment.

### Gross Profit

Gross profit as a percent of net sales remained flat in 2010 as compared to 2009 due to higher volume, cost reduction initiatives and lower restructuring and transition costs offset by lower price realization, higher material costs and higher mix of lower margin products. Gross profit as a percent of net sales increased 1.0 percentage point in 2009 as compared to 2008 due to better price realization, lower material costs and cost reduction initiatives offset partially by lower volume.

### Selling and Administrative Expenses

Selling and administrative expenses increased 0.9 percent in 2010 and decreased 27.6 percent in 2009. The increase in 2010 was due to higher volume related expenses, higher fuel costs, investments in selling and growth initiatives and higher incentive based compensation. These were offset partially by improved distribution efficiencies and cost control initiatives. The decrease in 2009 was due to lower volume related expenses, lower fuel costs, improved distribution efficiencies, cost control initiatives and gains from the sale of a facility and a corporate airplane. These were offset partially by the impact of favorable adjustments related to the fair value of mandatorily redeemable liabilities from prior acquisitions in 2008, increased costs from acquisitions and transition costs related to the various plant consolidations.

Selling and administrative expenses include freight expense for shipments to customers, product development costs and amortization expense of intangible assets. Refer to Summary of Significant Accounting Policies and Goodwill and Other Intangible Assets in the Notes to Consolidated Financial Statements for further information regarding the comparative expense levels for these items.

## **Restructuring and Impairment Charges**

During 2010, the Corporation made the decision to close an office furniture facility in Salisbury, North Carolina and consolidate production into existing office furniture manufacturing facilities. In connection with the closure of this facility, the Corporation recorded \$4.2 million of pre-tax charges which included \$2.3 million of accelerated depreciation of buildings, machinery and equipment recorded in cost of sales and \$1.9 million of severance and facility exit costs recorded as restructuring costs in 2010.

During 2010, the Corporation completed the shutdown of three office furniture facilities in South Gate, California; Louisburg, North Carolina and Owensboro, Kentucky and consolidated production into existing office furniture manufacturing facilities. The Corporation announced and started these activities during 2009. In connection with the closure of these facilities, the Corporation recorded \$12.6 million of pre-tax charges which included \$2.7 million of accelerated depreciation of machinery and equipment recorded in cost of sales, and \$9.9 million of severance and facility exit costs recorded as restructuring costs in 2009. During 2010, the Corporation incurred \$2.0 million of current period charges which included \$0.3 million of accelerated depreciation of machinery and equipment recorded in cost of sales and \$1.6 million of other costs recorded as restructuring costs.

The Corporation made the decision to close certain hearth products retail and distribution locations during 2010. A pre-tax charge of \$0.2 million was recorded for severance and facility exit costs.

During 2010, the Corporation completed the consolidation of significant production from its hearth products Mount Pleasant, Iowa plant to other existing hearth products manufacturing facilities. Additionally the Corporation completed the closure of hearth products distribution centers in Alsip, Illinois and Lake City, Minnesota and transferred operations to its Mount Pleasant facility. The Corporation's hearth products segment disposed of and consolidated several retail and distribution locations during 2009. In connection with these activities, the Corporation recorded \$6.7 million of pre-tax charges which included \$1.2 million of accelerated depreciation of machinery and equipment recorded in cost of sales and \$5.5 million of severance and facility exit costs, including accelerated depreciation of \$1.4 million and write-off of goodwill of \$0.6 million, recorded as restructuring costs in 2009. During 2010, the Corporation incurred \$0.1 million of current period charges recorded as restructuring costs.

The Corporation made the decision to sell certain hearth products distribution locations during the fourth quarter of 2010. The assets to be sold were moved to held for sale, and the Corporation recorded an impairment charge of \$5.0 million to reduce the value of the business unit to fair market value. The Corporation also recorded \$0.5 million of impairment charges in 2010 related to adjusting excess land held for sale to fair market value.

As part of the Corporation's annual impairment review, management concluded, due to market and economic conditions, a portion of its goodwill and indefinite-lived intangibles had carrying values greater than their fair market value and recorded an impairment charge of \$25.0 million in 2009 and \$21.8 million in 2008.

During 2008, the Corporation completed the shutdown of an office furniture facility in Richmond, Virginia, consolidated production into other manufacturing locations, closed two distribution centers and started up a new distribution center. The Corporation announced and started these activities during third quarter 2007. During 2008, the Corporation incurred \$4.2 million of current period charges which included \$0.4 million of accelerated depreciation of machinery and equipment recorded in cost of sales and \$3.8 million of other costs recorded as restructuring costs.

The Corporation's hearth products segment consolidated some of its service and distribution locations during 2007. In connection with those consolidations, the Corporation incurred \$0.3 million of current period charges during 2008 recorded as restructuring costs.

## **Operating Income**

Operating income increased \$49.3 million to \$57.9 million in 2010, compared to \$8.6 million in 2009. The increase was due to higher volume in all channels of the office furniture segment, cost control initiatives, improved distribution efficiencies and lower restructuring, transition and impairment charges. These were offset partially by decreased price realization, higher input costs, investments in selling, marketing and product initiatives and higher incentive based compensation. Operating income was \$8.6 million in 2009, a decrease of 90.7 percent compared to \$92.4 million in 2008. The decrease in 2009 was due to lower volume in all channels of the office furniture and hearth products segments, higher restructuring, transition and impairment charges and favorable adjustments recorded in 2008 to the fair value of mandatorily redeemable liabilities from prior acquisitions. These were offset partially by improved price realization, lower input costs, improved distribution efficiencies, cost control initiatives and gains recorded on the sale of a facility and a corporate airplane.

## **Income (Loss) From Continuing Operations**

Income from continuing operations in 2010, which excludes the Corporation's discontinued business (see Discontinued Operations in the Notes to Consolidated Financial Statements) increased to \$29.7 million compared to a loss of \$1.6 million in 2009. Income from continuing operations in 2009 was a loss of \$1.6 million compared with income of \$50.7 million in 2008, a 103.2 percent decrease. The loss from continuing operations in 2009 was positively impacted by decreased interest expense of \$4.8 million due to lower debt levels. Income from continuing operations per diluted share increased to \$0.65 in 2010 and decreased by 103.5 percent to \$(0.04) in 2009.

## **Discontinued Operations**

During 2010, the Corporation completed the sale of a non-core business in the office furniture segment and a small non-core component of its hearth products segment. Revenues and expenses associated with these components are presented as discontinued operations for all periods presented. Refer to Discontinued Operations in the Notes to Consolidated Financial Statements for further information.

## **Net Income (Loss) Attributable to HNI Corporation**

Net income attributable to parent company increased to \$26.9 million in 2010 compared to a loss of \$6.4 million in 2009 which was a decrease of 114.2 percent compared to 2008. Net income per diluted share increased to \$0.59 in 2010 and decreased by 113.7 percent to \$(0.14) in 2009.

## **Office Furniture**

Office furniture comprised 83 percent of consolidated net sales for 2010, 2009 and 2008. Net sales for office furniture increased 4 percent in 2010 to \$1.4 billion compared to \$1.3 billion in 2009. The increase of \$60 million included increased volume of \$73 million offset by lower price realization of \$13 million. The Corporation experienced growth in both the supplies-driven and contract channels as the economy stabilized. Net sales for office furniture decreased 33 percent in 2009 to \$1.3 billion compared to \$2.0 billion in 2008. Acquisitions contributed \$10 million of additional sales in 2009. Organic sales decreased \$684 million or 34 percent, including increased price realization of \$77 million, due to substantial weakness in both the supplies-driven and contract channels which were both impacted by economic conditions. BIFMA reported 2010 shipments up 6 percent from 2009 levels which were down 30 percent from 2008 levels.

Operating profit as a percent of net sales was 6.2 percent in 2010, 3.9 percent in 2009 and 5.4 percent in 2008. The increase in operating margins in 2010 was due to lower restructuring and impairment charges of \$31 million compared to 2009 as well as higher volume, cost control initiatives and improved distribution efficiencies. These were partially offset by decreased price realization, higher input costs and investments in selling, marketing and growth initiatives. The decrease in operating margins in 2009 was due to additional restructuring and impairment charges of \$9 million compared to 2008 as well as lower volume and the impact of prior year favorable adjustments to the current fair value of mandatorily redeemable liabilities from prior acquisitions. These were partially offset by increased price realization, lower material costs, improved distribution efficiencies, lower transition costs and cost control initiatives.

## **Hearth Products**

Hearth products sales increased 1 percent in 2010 to \$282 million compared to \$278 million in 2009. This was due to an increase in the new construction channel offset partially by a decrease in the remodel-retrofit channel. Hearth products sales decreased 32 percent in 2009 to \$278 million compared to \$411 million in 2008. The decrease was due to significant declines in both the new construction and remodel-retrofit channels.

Operating profit as a percent of sales in 2010 was 1.0 percent compared to operating loss as a percent of sales of 5.3 percent in 2009 and operating profit as a percent of sales of 2.8 percent in 2008. The increase in operating margins in 2010 was due to increased price realization, cost control initiatives and lower restructuring and transition costs offset partially by higher input costs. The decrease in operating margins in 2009 was due to lower volume and higher restructuring and transition costs offset partially by cost reduction initiatives.

## **Liquidity and Capital Resources**

### *Cash Flow – Operating Activities*

Cash generated from operating activities in 2010 totaled \$94.4 million compared to \$193.2 million generated in 2009. Changes in working capital balances resulted in a \$20.0 million use of cash in 2010 compared to a \$97.3 million source of cash in the prior year.

The use of cash related to working capital balances in 2010 was primarily driven from higher trade receivables of \$30.0 million and higher inventory of \$4.4 million due to increased sales during the fourth quarter. These uses of cash were offset partially by increased current liabilities of \$14.9 million. The increase in current liabilities is comprised of a \$9.2 million increase in trade accounts payable, a \$5.1 million increase in other accruals, namely compensation expense accruals, and a \$0.5 million increase in tax-related accruals.

The source of cash related to working capital balances in 2009 was primarily driven from lower trade receivables of \$74.6 million and lower inventory of \$19.1 million due to strong collection efforts and lower sales. These sources of cash were offset partially by decreased current liabilities of \$5.8 million. The decrease in current liabilities is comprised of \$31.9 million of other accruals namely compensation, retirement and marketing expense accruals offset by a \$17.6 million increase in trade accounts payable and \$8.5 million in tax-related accruals.

The Corporation places special emphasis on management and control of working capital with a particular focus on trade receivables and inventory levels. The success achieved in managing receivables is in large part a result of doing business with quality customers and maintaining close communication with them. Management believes recorded trade receivable valuation allowances at the end of 2010 are adequate to cover the risk of potential bad debts. Allowances for non-collectible trade receivables, as a percent of gross trade receivables, totaled 2.8 percent, 3.8 percent and 3.6 percent at the end of fiscal years 2010, 2009 and 2008, respectively. The Corporation's inventory turns were 16, 15 and 17, for 2010, 2009 and 2008, respectively.

### *Cash Flow – Investing Activities*

Capital expenditures, including capitalized software, were \$26.7 million in 2010, \$17.6 million in 2009 and \$71.5 million in 2008. These expenditures have consistently focused on machinery and equipment and tooling required to support new products, continuous improvements in our manufacturing processes and cost savings initiatives. The increase in capital expenditures in 2008 was due to facility consolidations completed in 2008. The Corporation anticipates capital expenditures for 2011 to total \$30 to \$35 million, primarily related to new products and operational process improvement.

Included in investing activities is a net cash outflow of \$0.1 million and \$0.5 million in 2010 and 2009, respectively, for a contingent purchase commitment related to the Harman Stove Company ("Harman") acquisition in 2007. The acquisition of Harman added to the hearth products segment alternative fuel business. In 2008, investing activities reflected a net cash outflow of \$75.5 million related to the acquisition of Hickory Business Furniture, LLC ("HBF"). The addition of HBF bolstered the Corporation's contract office furniture business with its strong brand recognition among interior designers and emphasis on new products. Refer to the Business Combination note in the Notes to Consolidated Financial Statements for additional information.

In 2010, the Corporation completed the sale of a facility located in Louisburg, North Carolina. In 2009, the Corporation completed the sale of a corporate airplane and a facility located in Lakeville, Minnesota. In 2008, the Corporation completed the sale of a facility located in Richmond, Virginia. The proceeds from these sales of \$1 million, \$5 million and \$5 million are reflected in the Consolidated Statement of Cash Flows as "Proceeds from sale of property, plant and equipment" for 2010, 2009 and 2008, respectively.

In 2010, the Corporation completed the sale of a small, non-core business in the office furniture segment and a small non-core component of its hearth products segment. The combined proceeds from these sales of \$4 million are reflected in the Consolidated Statement of Cash Flows in investing activities.

In 2009, the Corporation sold \$21 million of long-term investments and used the proceeds to repay debt.

## *Cash Flow – Financing Activities*

On June 11, 2010, the Corporation replaced a \$300 million revolving credit facility entered into on January 28, 2005 with a new revolving credit facility providing for a maximum borrowing of \$150 million subject to increase (to a maximum amount of \$250 million) or reduction from time to time according to the terms of the underlying credit agreement. Amounts borrowed under the credit agreement may be borrowed, repaid and reborrowed from time to time until June 11, 2014. The Corporation paid approximately \$1.6 million of debt issuance costs that are being amortized straight-line over the term of the credit agreement. As of January 1, 2011 and during the year, net borrowings under the revolving credit facility were at \$50 million and are classified as short-term as the Corporation expects to repay the borrowings within a year.

On June 30, 2008, the Corporation entered into a term loan credit agreement which allowed for a one-time borrowing of \$50 million in the form of a term loan. The Corporation paid off the term loan during 2009.

In 2006, the Corporation refinanced \$150 million of borrowings outstanding under its prior revolving credit facility with 5.54 percent, ten-year unsecured Senior Notes due in 2016 issued through the private placement debt market. Interest payments are due semi-annually on April 1 and October 1 of each year and the principal is due in a lump sum in 2016.

Additional borrowing capacity of \$100 million, less amounts used for designated letters of credit, is available through the revolving credit facility in the event cash generated from operations should be inadequate to meet future needs. The Corporation does not currently expect access to future capital to be a constraint on planned growth. Long-term debt, including capital lease obligations, was 27% of total capitalization as of January 1, 2011, 32% as of January 2, 2010 and 37% as of January 3, 2009.

The credit agreement pertaining to the revolving credit facility and the note purchase agreement pertaining to the Senior Notes contain covenants that, among other things, restrict, subject to certain exceptions, our ability to:

- incur additional indebtedness and lease obligations and make guarantees;
- create liens on assets;
- engage in any material line of business substantially different from existing lines of business;
- sell assets;
- make investments, loans and advances, including acquisitions;
- engage in sale-leaseback transactions in excess of \$50 million in the aggregate;
- repay the Senior Notes or enter into certain amendments thereof; and
- engage in certain transactions with affiliates.

The credit agreement governing the Corporation's revolving credit facility contains a number of covenants, including covenants requiring maintenance of the following financial ratios as of the end of any fiscal quarter:

- a consolidated interest coverage ratio of not less than 4.0 to 1.0, based upon the ratio of (a) consolidated EBITDA (as defined in the credit agreement) for the last four fiscal quarters to (b) the sum of consolidated interest charges; and
- a consolidated leverage ratio of not greater than 3.0 to 1.0, based upon the ratio of (a) the quarter-end consolidated funded indebtedness (as defined in the credit agreement) to (b) consolidated EBITDA for the last four fiscal quarters.

The note purchase agreement pertaining to the Corporation's Senior Notes also contains a number of covenants, including a covenant requiring maintenance of consolidated debt to consolidated EBITDA (as defined in the note purchase agreement) of not greater than 3.5 to 1.0, based upon the ratio of (a) the quarter-end consolidated funded indebtedness (as defined in the note purchase agreement) to (b) consolidated EBITDA for the last four fiscal quarters.

The revolving credit facility and Senior Notes are the primary sources of committed funding from which the Corporation finances its planned capital expenditures, strategic initiatives such as repurchases of common stock and certain working capital needs. Non-compliance with the various financial covenant ratios could prevent the Corporation from being able to access further borrowings under the revolving credit facility, require immediate repayment of all amounts outstanding with respect to the revolving credit facility and Senior Notes and increase the cost of borrowing.

The most restrictive of the financial covenants is the consolidated leverage ratio requirement of 3.0 to 1.0 included in the credit agreement governing the revolving credit facility. Under the credit agreement, adjusted EBITDA is defined as consolidated net income before interest expense, income taxes and depreciation and amortization of intangibles, as well as non-cash nonrecurring charges and all non-cash items increasing net income. At January 1, 2011, the Corporation was well below this ratio and was in

compliance with all of the covenants and other restrictions in the credit agreement and note purchase agreement. The Corporation currently expects to remain in compliance over the next twelve months.

In 2008, the Corporation entered into an interest rate swap agreement with one of its relationship banks, designated as a cash flow hedge, for purposes of managing its benchmark interest rate fluctuation risk. The fair value of the interest rate swap arrangement, as further described in the Derivative Financial Instrument note in the Notes to Consolidated Financial Statements, was a negative \$0.9 million at the end of 2010. The fair value of the swap arrangement changes based on fluctuations in market interest rates. Changes in fair value are recorded as a component of accumulated other comprehensive income in the equity section of the Corporation's consolidated balance sheet. This interest rate swap had the effect of increasing total interest expense by \$2.1 million in 2010.

During 2010, the Corporation repurchased 655,032 shares of its common stock at a cost of approximately \$17.8 million, or an average price of \$27.20. The Board authorized \$200 million on August 8, 2006, and an additional \$200 million on November 9, 2007, for repurchases of the Corporation's common stock. As of January 1, 2011 approximately \$145.8 million of this authorized amount remained unspent. During 2009, the Corporation did not repurchase any shares of its common stock. During 2008, the Corporation repurchased 1,004,700 shares of its common stock at a cost of approximately \$28.6 million, or an average price of \$28.42.

A cash dividend has been paid every quarter since April 15, 1955, and quarterly dividends are expected to continue. Cash dividends were \$0.86 per common share for 2010, 2009 and 2008. Further the Board announced a 6.98 percent increase in the quarterly dividend from \$0.215 to \$0.23 per common share effective with the March 7, 2011 dividend payment for shareholders of record at the close of business on February 28, 2011. The previous quarterly dividend increase was from \$0.195 to \$0.215 per common share effective with the February 29, 2008 dividend payment for shareholders of record at the close of business on February 22, 2008. The average dividend payout percentage for the most recent three-year period has been 72 percent of prior year earnings.

Cash, cash equivalents and short-term investments totaled \$109.7 million at the end of 2010 compared to \$93.4 million at the end of 2009 and \$49.3 million at the end of 2008. These funds, coupled with cash from future operations and additional borrowings, if needed, are expected to be adequate to finance operations, planned improvements and internal growth. The Corporation currently expects to be able to satisfy cash flow needs over the next twelve months with existing facilities.

#### *Contractual Obligations*

The following table discloses the Corporation's obligations and commitments to make future payments under contracts:

(In thousands)	Payments Due by Period				
	Total	Less than 1 Year	1 – 3 Years	3 – 5 Years	More than 5 Years
Long-term debt obligations, including estimated interest (1)	\$ 253,795	\$ 60,167	\$ 16,620	\$ 16,620	\$ 160,388
Capital lease obligations	156	35	71	50	—
Operating lease obligations	85,009	31,071	23,256	14,502	16,180
Purchase obligations (2)	56,895	56,895	—	—	—
Other long-term obligations (3)	26,882	1,288	4,544	4,063	16,987
<b>Total</b>	<b>\$ 422,737</b>	<b>\$ 149,456</b>	<b>\$ 44,491</b>	<b>\$ 35,235</b>	<b>\$ 193,555</b>

- (1) Interest has been included for all debt at either the fixed rate or variable rate in effect as of January 1, 2011, as applicable.
- (2) Purchase obligations include agreements to purchase goods or services that are enforceable, legally binding and specify all significant terms, including the quantity to be purchased, the price to be paid and the timing of the purchase.
- (3) Other long-term obligations represent payments due to members who are participants in the Corporation's deferred and long-term incentive compensation programs, mandatory purchases of the remaining unowned interest in an acquisition, liability for unrecognized tax liabilities and contribution and benefit payments expected to be made pursuant to the Corporation's post-retirement benefit plans. It should be noted the obligations related to post-retirement benefit plans are not contractual and the plans could be amended at the discretion of the Corporation. The disclosure of contributions and benefit payments has been limited to 10 years, as information beyond this time period was not available.

### *Litigation and Uncertainties*

The Corporation is involved in various kinds of disputes and legal proceedings that have arisen in the ordinary course of its business, including pending litigation, environmental remediation, taxes and other claims. It is the Corporation's opinion, after consultation with legal counsel, that liabilities, if any, resulting from these matters are not expected to have a material adverse effect on the Corporation's financial condition, although such matters could have a material effect on the Corporation's quarterly or annual operating results and cash flows when resolved in a future period.

### **Looking Ahead**

Management remains optimistic about the office furniture and hearth markets and the gradually improving economy. The Corporation will build on the momentum from 2010 to grow its businesses and increase profits in 2011.

The Corporation will focus on its core customers and core market segments, respond to customers' needs and the demands of the market. It will continue to reduce costs, improve operations and fiercely manage cash. The Corporation will increase investments in new products, brand development and selling initiatives.

The Corporation remains focused on creating long-term shareholder value by growing its business through investment in building brands, product solutions and selling models, enhancing its strong member-owner culture and remaining focused on its long-standing rapid continuous improvement programs to build best total cost and a lean enterprise.

### **ITEM 7A. QUANTITATIVE AND QUALITATIVE DISCLOSURES ABOUT MARKET RISK**

During the normal course of business, the Corporation is subjected to market risk associated with interest rate movements. Interest rate risk arises from our variable interest debt obligations. For information related to the Corporation's long-term debt, refer to the Long-Term Debt disclosure in the Notes to Consolidated Financial Statements filed as part of this report. As of January 1, 2011, the Corporation has one interest rate swap agreement. Under the interest rate swap agreement, the Corporation pays a fixed rate of interest and receives a variable rate of interest equal to the one-month London Interbank Offered Rate ("LIBOR") as determined on the last day of each monthly settlement period on an aggregated notational principal amount of \$50 million. The interest rate swap derivative instrument is held and used by the Corporation as a tool for managing interest rate risk. It is not used for trading or speculative purposes. The fair market value of the effective swap instrument was negative \$0.9 million at January 1, 2011. The impact of this swap instrument on total interest expense was an addition to interest expense of \$2.1 million in 2010. The Corporation does not currently have any significant foreign currency exposure.

The Corporation began using derivative instruments to mitigate the volatility of diesel fuel prices and related fuel surcharges and not to speculate the future price of diesel fuel in April of 2010. The hedging instruments consist of a series of financially settled fixed forward contracts with expiration dates ranging up to twelve months. At January 2, 2011, the effect on the consolidated balance sheet was insignificant. The effect on the consolidated statement of income for the year ended January 1, 2011 was operating expense of \$0.4 million.

The Corporation is exposed to risks arising from price changes for certain direct materials and assembly components used in its operations. The most significant material purchases and cost for the Corporation are for steel, plastics, textiles, wood particleboard and cartoning. Steel is the most significant raw material used in the manufacturing of products. The market price of plastics and textiles in particular are sensitive to the cost of oil and natural gas. Oil, natural gas and diesel fuel prices have experienced high volatility in the last several years and as a result the costs of plastics, textiles and transportation have also been volatile. The cost of wood particleboard has been impacted by continued downsizing of production capacity as well as increased volatility in input and transportation costs. All of these materials are impacted increasingly by global market pressure. The Corporation works to offset these increased costs through global sourcing initiatives and price increases on its products; however, historically, margins have been negatively impacted due to the lag between cost increases and the Corporation's ability to increase its prices. The Corporation believes future market price increases on its key direct materials and assembly components are likely. Consequently, it views the prospect of such increases as an outlook risk to the business.

### **ITEM 8. FINANCIAL STATEMENTS AND SUPPLEMENTARY DATA**

The financial statements listed under Item 15(a)(1) and (2) are filed as part of this report.

The Summary of Unaudited Quarterly Results of Operations follows the Notes to Consolidated Financial Statements filed as part of this report.



**ITEM 9. CHANGES IN AND DISAGREEMENTS WITH ACCOUNTANTS ON ACCOUNTING AND FINANCIAL DISCLOSURE**

None.

**ITEM 9A. CONTROLS AND PROCEDURES**

Disclosure controls and procedures are designed to ensure that information required to be disclosed by the Corporation in the reports it files or submits under the Securities Exchange Act of 1934 (the "Exchange Act") is recorded, processed, summarized and reported, within the time periods specified in the SEC's rules and forms. Disclosure controls and procedures are also designed to ensure information is accumulated and communicated to management, including the Chief Executive Officer and Chief Financial Officer, as appropriate, to allow timely decisions regarding required disclosures.

Under the supervision and with the participation of management, the Chief Executive Officer and Chief Financial Officer of the Corporation have evaluated the effectiveness of the design and operation of the Corporation's disclosure controls and procedures as defined in Rules 13a – 15(e) and 15d – 15(e) under the Exchange Act. As of January 1, 2011, and, based on their evaluation, the Chief Executive Officer and Chief Financial Officer have concluded these controls and procedures are effective. There have not been any changes in the Corporation's internal control over financial reporting that occurred during the fiscal quarter ended January 1, 2011 that have materially affected, or are reasonably likely to materially affect, the Corporation's internal control over financial reporting.

Management's annual report on internal control over financial reporting and the attestation report of the Corporation's independent registered public accounting firm are included in Item 15. Exhibits, Financial Statement Schedules of this report under the headings "Management Report on Internal Control Over Financial Reporting" and "Report of Independent Registered Public Accounting Firm," respectively.

**ITEM 9B. OTHER INFORMATION**

None.

## **PART III**

### **ITEM 10. DIRECTORS, EXECUTIVE OFFICERS AND CORPORATE GOVERNANCE**

The information under the caption "Proposal No. 1 - Election of Directors" of the Corporation's Definitive Proxy Statement on Schedule 14A for the Annual Meeting of Shareholders to be held on May 10, 2011, is incorporated herein by reference. For information with respect to executive officers of the Corporation, see Table I - Executive Officers of the Registrant included in Part I of this report.

Information relating to the identification of the audit committee and audit committee financial expert of the Corporation is contained under the caption "Information Regarding the Board" of the Corporation's Definitive Proxy Statement on Schedule 14A for the Annual Meeting of Shareholders to be held on May 10, 2011, and is incorporated herein by reference.

#### **Code of Ethics**

The information under the caption "Code of Business Conduct and Ethics" of the Corporation's Definitive Proxy Statement on Schedule 14A for the Annual Meeting of Shareholders to be held on May 10, 2011, is incorporated herein by reference.

#### **Compliance with Section 16(a) of the Exchange Act**

The information under the caption "Section 16(a) Beneficial Ownership Reporting Compliance" of the Corporation's Definitive Proxy Statement on Schedule 14A for the Annual Meeting of Shareholders to be held on May 10, 2011, is incorporated herein by reference.

### **ITEM 11. EXECUTIVE COMPENSATION**

The information under the captions "Executive Compensation" and "Director Compensation" of the Corporation's Definitive Proxy Statement on Schedule 14A for the Annual Meeting of Shareholders to be held on May 10, 2011, is incorporated herein by reference.

### **ITEM 12. SECURITY OWNERSHIP OF CERTAIN BENEFICIAL OWNERS AND MANAGEMENT AND RELATED STOCKHOLDER MATTERS**

The information under the captions "Security Ownership" and "Equity Compensation Plan Information" of the Corporation's Definitive Proxy Statement on Schedule 14A for the Annual Meeting of Shareholders to be held on May 10, 2011, is incorporated herein by reference.

### **ITEM 13. CERTAIN RELATIONSHIPS AND RELATED TRANSACTIONS, AND DIRECTOR INDEPENDENCE**

The information under the captions "Information Regarding the Board" and "Review, Approval or Ratification of Transactions with Related Persons" of the Corporation's Definitive Proxy Statement on Schedule 14A for the Annual Meeting of Shareholders to be held on May 10, 2011, is incorporated herein by reference.

### **ITEM 14. PRINCIPAL ACCOUNTING FEES AND SERVICES**

The information under the caption "Fees Incurred for PricewaterhouseCoopers LLP" of the Corporation's Definitive Proxy Statement on Schedule 14A for the Annual Meeting of Shareholders to be held on May 10, 2011, is incorporated herein by reference.

## PART IV

### ITEM 15. EXHIBITS, FINANCIAL STATEMENT SCHEDULES

#### (a)(1) Financial Statements

The following consolidated financial statements of the Corporation and its subsidiaries included in the Corporation's 2010 Annual Report to Shareholders are filed as a part of this Report pursuant to Item 8:

	<u>Page</u>
Management Report on Internal Control Over Financial Reporting	38
Report of Independent Registered Public Accounting Firm	39
Consolidated Statements of Income for the Years Ended January 1, 2011, January 2, 2010, and January 3, 2009	40
Consolidated Balance Sheets – January 1, 2011, January 2, 2010, and January 3, 2009	41
Consolidated Statements of Shareholders' Equity for the Years Ended January 1, 2011, January 2, 2010, and January 3, 2009	42
Consolidated Statements of Cash Flows for the Years Ended January 1, 2011, January 2, 2010, and January 3, 2009	43
Notes to Consolidated Financial Statements	44
Investor Information	71

#### (2) Financial Statement Schedules

The following consolidated financial statement schedule of the Corporation and its subsidiaries is attached:

Schedule II	Valuation and Qualifying Accounts for the Years Ended January 1, 2011, January 2, 2010 and January 3, 2009	72
-------------	--	----

All other schedules for which provision is made in the applicable accounting regulation of the SEC are not required under the related instructions or are inapplicable and, therefore, have been omitted.

#### (b) Exhibits

An exhibit index of all exhibits incorporated by reference into, or filed with, this Report appears on Page 73. The following exhibits are filed herewith:

<u>Exhibit</u>	
(21)	Subsidiaries of the Registrant
(23)	Consent of Independent Registered Public Accounting Firm
(31.1)	Certification of the CEO Pursuant to Section 302 of the Sarbanes-Oxley Act of 2002
(31.2)	Certification of the CFO Pursuant to Section 302 of the Sarbanes-Oxley Act of 2002
(32.1)	Certification of CEO and CFO Pursuant to 18 U.S.C. Section 1350, as Adopted Pursuant to Section 906 of the Sarbanes-Oxley Act of 2002



<u>Signature</u>	<u>Title</u>	<u>Date</u>
<u>/s/ Larry B. Porcellato</u> Larry B. Porcellato	Director	February 25, 2011
<u>/s/ Abbie J. Smith</u> Abbie J. Smith	Director	February 25, 2011
<u>/s/ Brian E. Stern</u> Brian E. Stern	Lead Director	February 25, 2011
<u>/s/ Ronald V. Waters, III</u> Ronald V. Waters, III	Director	February 25, 2011

## Management Report on Internal Control Over Financial Reporting

Management of HNI Corporation is responsible for establishing and maintaining adequate internal control over financial reporting as defined in Rules 13a-15(f) and 15d-15(f) under the Securities Exchange Act of 1934. HNI Corporation's internal control over financial reporting is a process designed to provide reasonable assurance regarding the reliability of financial reporting and the preparation of financial statements for external purposes in accordance with accounting principles generally accepted in the United States of America. HNI Corporation's internal control over financial reporting includes those written policies and procedures that:

- pertain to the maintenance of records that, in reasonable detail, accurately and fairly reflect the transactions and dispositions of the assets of HNI Corporation;
- provide reasonable assurance that transactions are recorded as necessary to permit preparation of financial statements in accordance with accounting principles generally accepted in the United States of America, and that receipts and expenditures of HNI Corporation are being made only in accordance with authorizations of management and directors of HNI Corporation; and
- provide reasonable assurance regarding prevention or timely detection of unauthorized acquisition, use or disposition of assets that could have a material effect on the consolidated financial statements.

Internal control over financial reporting includes the controls themselves, monitoring (including internal auditing practices), and actions taken to correct deficiencies as identified.

Because of its inherent limitations, internal control over financial reporting may not prevent or detect misstatements. Also, projections of any evaluation of effectiveness to future periods are subject to the risk controls may become inadequate because of changes in conditions, or the degree of compliance with the policies or procedures may deteriorate.

Management assessed the effectiveness of HNI Corporation's internal control over financial reporting as of January 1, 2011. Management based this assessment on criteria for effective internal control over financial reporting described in *Internal Control – Integrated Framework* issued by the Committee of Sponsoring Organizations of the Treadway Commission. Management's assessment included an evaluation of the design of HNI Corporation's internal control over financial reporting and testing of operational effectiveness of HNI Corporation's internal control over financial reporting. Management reviewed the results of its assessment with the Audit Committee of the Board of Directors.

Based on this assessment, management determined, as of January 1, 2011, HNI Corporation maintained effective internal control over financial reporting.

Management's assessment of the effectiveness of HNI Corporation's internal control over financial reporting as of January 1, 2011 has been audited by PricewaterhouseCoopers LLP, an independent registered public accounting firm, as stated in its report which appears herein.

February 25, 2011

## Report of Independent Registered Public Accounting Firm

To the Board of Directors and Shareholders of HNI Corporation:

In our opinion, the consolidated financial statements listed in the index appearing under Item 15(a)(1), present fairly, in all material respects, the financial position of HNI Corporation and its subsidiaries (the "Corporation") at January 1, 2011, January 2, 2010, and January 3, 2009, and the results of their operations and their cash flows for each of the three years in the period ended January 1, 2011 in conformity with accounting principles generally accepted in the United States of America. In addition, in our opinion, the financial statement schedule listed in the index appearing under Item 15(a)(2) presents fairly, in all material respects, the information set forth therein when read in conjunction with the related consolidated financial statements. Also in our opinion, the Corporation maintained, in all material respects, effective internal control over financial reporting as of January 1, 2011, based on criteria established in *Internal Control - Integrated Framework* issued by the Committee of Sponsoring Organizations of the Treadway Commission (COSO). The Corporation's management is responsible for these financial statements and financial statement schedule, for maintaining effective internal control over financial reporting and for its assessment of the effectiveness of internal control over financial reporting, included in the Management Report on Internal Control Over Financial Reporting appearing under Item 15. Our responsibility is to express opinions on these financial statements, on the financial statement schedule, and on the Corporation's internal control over financial reporting based on our integrated audits. We conducted our audits in accordance with the standards of the Public Company Accounting Oversight Board (United States). Those standards require that we plan and perform the audits to obtain reasonable assurance about whether the financial statements are free of material misstatement and whether effective internal control over financial reporting was maintained in all material respects. Our audits of the financial statements included examining, on a test basis, evidence supporting the amounts and disclosures in the financial statements, assessing the accounting principles used and significant estimates made by management, and evaluating the overall financial statement presentation. Our audit of internal control over financial reporting included obtaining an understanding of internal control over financial reporting, assessing the risk that a material weakness exists, and testing and evaluating the design and operating effectiveness of internal control based on the assessed risk. Our audits also included performing such other procedures as we considered necessary in the circumstances. We believe that our audits provide a reasonable basis for our opinions.

A company's internal control over financial reporting is a process designed to provide reasonable assurance regarding the reliability of financial reporting and the preparation of financial statements for external purposes in accordance with generally accepted accounting principles. A company's internal control over financial reporting includes those policies and procedures that (i) pertain to the maintenance of records that, in reasonable detail, accurately and fairly reflect the transactions and dispositions of the assets of the company; (ii) provide reasonable assurance that transactions are recorded as necessary to permit preparation of financial statements in accordance with generally accepted accounting principles, and that receipts and expenditures of the company are being made only in accordance with authorizations of management and directors of the company; and (iii) provide reasonable assurance regarding prevention or timely detection of unauthorized acquisition, use, or disposition of the company's assets that could have a material effect on the financial statements.

Because of its inherent limitations, internal control over financial reporting may not prevent or detect misstatements. Also, projections of any evaluation of effectiveness to future periods are subject to the risk that controls may become inadequate because of changes in conditions, or that the degree of compliance with the policies or procedures may deteriorate.

/s/PricewaterhouseCoopers LLP  
Chicago, Illinois  
February 25, 2011

HNI CORPORATION AND SUBSIDIARIES  
**CONSOLIDATED STATEMENTS OF INCOME**

(Amounts in thousands, except for per share data)

<b>For the Years</b>	<b>2010</b>		<b>2009</b>		<b>2008</b>	
Net sales	\$	1,686,728	\$	1,623,327	\$	2,429,631
Cost of products sold		1,101,112		1,060,526		1,611,750
Gross profit		585,616		562,801		817,881
Selling and administrative expenses		518,257		513,776		709,637
Restructuring related and impairment charges		9,449		40,443		15,880
Operating income		57,910		8,582		92,364
Interest income		471		415		1,172
Interest expense		11,903		12,080		16,865
Income (loss) from continuing operations before income taxes		46,478		(3,083)		76,671
Income taxes		16,797		(1,485)		25,965
Income (loss) from continuing operations, less applicable income taxes		29,681		(1,598)		50,706
Discontinued operations, less applicable income taxes		(2,558)		(4,661)		(5,099)
Net income (loss)		27,123		(6,259)		45,607
Less: Net income attributable to the noncontrolling interest		182		183		157
Net income (loss) attributable to HNI Corporation	\$	26,941	\$	(6,442)	\$	45,450
Income (loss) from continuing operations attributable to HNI Corporation per common share – basic	\$	0.66	\$	(0.04)	\$	1.14
Discontinued operations attributable to HNI Corporation per common share – basic	\$	(0.06)	\$	(0.10)	\$	(0.11)
Net income (loss) attributable to HNI Corporation per common share – basic	\$	0.60	\$	(0.14)	\$	1.03
Weighted average shares outstanding – basic		44,993,934		44,888,809		44,309,765
Income (loss) from continuing operations attributable to HNI Corporation per common share – diluted	\$	0.65	\$	(0.04)	\$	1.13
Discontinued operations attributable to HNI Corporation per common share – diluted	\$	(0.06)	\$	(0.10)	\$	(0.11)
Net income (loss) attributable to HNI Corporation per common share – diluted	\$	0.59	\$	(0.14)	\$	1.02
Weighted average shares outstanding - diluted		45,808,704		44,888,809		44,433,945

*The accompanying notes are an integral part of the consolidated financial statements.*



HNI CORPORATION AND SUBSIDIARIES  
**CONSOLIDATED BALANCE SHEETS**  
(Amounts in thousands of dollars and shares except par value)

As of Year-end	2010	2009	2008
<b>Assets</b>			
<b>Current Assets</b>			
Cash and cash equivalents	\$ 99,096	\$ 87,374	\$ 39,538
Short-term investments	10,567	5,994	9,750
Receivables, net	190,118	163,732	238,327
Inventories	68,956	65,144	84,290
Deferred income taxes	18,467	20,299	16,313
Prepaid expenses and other current assets	20,957	17,728	29,623
<b>Total Current Assets</b>	<b>408,161</b>	<b>360,271</b>	<b>417,841</b>
<b>Property, Plant, and Equipment</b>	<b>231,781</b>	<b>260,102</b>	<b>315,606</b>
<b>Goodwill</b>	<b>260,634</b>	<b>261,114</b>	<b>268,392</b>
<b>Other Assets</b>	<b>97,304</b>	<b>112,839</b>	<b>163,790</b>
<b>Total Assets</b>	<b>\$ 997,880</b>	<b>\$ 994,326</b>	<b>\$ 1,165,629</b>
<b>Liabilities and Shareholders' Equity</b>			
<b>Current Liabilities</b>			
Accounts payable and accrued expenses	\$ 311,066	\$ 299,718	\$ 313,431
Note payable and current maturities of long-term debt and capital lease obligations	50,029	39	54,494
Current maturities of other long-term obligations	256	385	5,700
<b>Total Current Liabilities</b>	<b>361,351</b>	<b>300,142</b>	<b>373,625</b>
<b>Long-Term Debt</b>	<b>150,000</b>	<b>200,000</b>	<b>267,300</b>
<b>Capital Lease Obligations</b>	<b>111</b>	<b>—</b>	<b>43</b>
<b>Other Long-Term Liabilities</b>	<b>47,437</b>	<b>50,332</b>	<b>50,399</b>
<b>Deferred Income Taxes</b>	<b>30,525</b>	<b>24,227</b>	<b>25,271</b>
<b>Commitments and Contingencies</b>			
<b>Shareholders' Equity</b>			
Preferred stock - \$1 par value	—	—	—
Authorized: 2,000			
Issued: None			
Common stock - \$1 par value	44,841	45,093	44,324
Authorized: 200,000			
Issued and outstanding: 2010-44,841; 2009-45,093; 2008-44,324			
Additional paid-in capital	18,011	19,695	6,037
Retained Earnings	343,474	355,270	400,379
Accumulated other comprehensive income	1,659	(774)	(1,907)
<b>Total HNI Corporation shareholders' equity</b>	<b>407,985</b>	<b>419,284</b>	<b>448,833</b>
Noncontrolling interest	471	341	158
<b>Total Equity</b>	<b>408,456</b>	<b>419,625</b>	<b>448,991</b>
<b>Total Liabilities and Equity</b>	<b>\$ 997,880</b>	<b>\$ 994,326</b>	<b>\$ 1,165,629</b>

*The accompanying notes are an integral part of the consolidated financial statements.*

HNI CORPORATION AND SUBSIDIARIES  
**CONSOLIDATED STATEMENTS OF SHAREHOLDERS' EQUITY**

(Amounts in thousands)	Parent Company Shareholders' Equity						Non-controlling Interest	Total Shareholders' Equity
	Common Stock	Additional Paid-in Capital	Retained Earnings	Accumulated Other Comprehensive (Loss)/Income				
Balance, December 29, 2007	\$ 44,835	\$ 3,152	\$ 410,075	\$ 846	\$ 1	\$	458,909	
Comprehensive income:								
Net income			45,450		157		45,607	
Other comprehensive income				(2,753)			(2,753)	
Comprehensive income							42,854	
Cash dividends; \$0.86 per share			(38,095)				(38,095)	
Common shares – treasury:								
Shares purchased	(1,005)	(10,497)	(17,051)				(28,553)	
Shares issued under Members' Stock Purchase Plan and stock awards	494	13,382					13,876	
Balance, January 3, 2009	\$ 44,324	\$ 6,037	\$ 400,379	\$ (1,907)	\$ 158	\$	448,991	
Comprehensive income:								
Net income (loss)			(6,442)		183		(6,259)	
Other comprehensive income				1,133			1,133	
Comprehensive income (loss)							(5,126)	
Cash dividends; \$0.86 per share			(38,667)				(38,667)	
Common shares – treasury:								
Shares purchased								
Shares issued under Members' Stock Purchase Plan and stock awards	769	13,658					14,427	
Balance, January 2, 2010	\$ 45,093	\$ 19,695	\$ 355,270	\$ (774)	\$ 341	\$	419,625	
Comprehensive income:								
Net income (loss)			26,941		182		27,123	
Other comprehensive income				2,433			2,433	
Comprehensive income (loss)							29,556	
Distributions to noncontrolling interest					(52)		(52)	
Cash dividends; \$0.86 per share			(38,737)				(38,737)	
Common shares – treasury:								
Shares purchased	(655)	(17,162)					(17,817)	
Shares issued under Members' Stock Purchase Plan and stock awards	403	15,478					15,881	
Balance, January 1, 2011	\$ 44,841	\$ 18,011	\$ 343,474	\$ 1,659	\$ 471	\$	408,456	

*The accompanying notes are an integral part of the consolidated financial statements.*

HNI CORPORATION AND SUBSIDIARIES  
**CONSOLIDATED STATEMENTS OF CASH FLOWS**  
(Amounts in thousands)

<b>For the Years</b>	2010	2009	2008
<b>Net Cash Flows From (To) Operating Activities:</b>			
Net income (loss)	\$ 27,123	\$ (6,259)	\$ 45,607
Noncash items included in net income:			
Depreciation and amortization	58,630	74,867	70,155
Other postretirement and post-employment benefits	1,691	1,849	1,509
Stock-based compensation	6,601	3,830	1,616
Excess tax benefits from stock compensation	(25)	(8)	(11)
Deferred income taxes	7,196	(5,844)	2,600
Net loss on sales, retirements and impairments of long-lived assets and intangibles	8,951	26,025	22,691
Stock issued to retirement plan	5,400	6,565	6,592
Other – net	2,025	2,338	(4,065)
Changes in working capital, excluding acquisition and disposition:			
Receivables	(30,027)	74,593	58,570
Inventories	(4,391)	19,146	31,842
Prepaid expenses and other current assets	(527)	9,317	306
Accounts payable and accrued expenses	14,412	(14,313)	(59,145)
Income taxes	529	8,514	(1,255)
Increase (decrease) in other liabilities	(3,204)	(7,415)	(2,643)
<b>Net cash flows from (to) operating activities</b>	<b>94,384</b>	<b>193,205</b>	<b>174,369</b>
<b>Net Cash Flows From (To) Investing Activities:</b>			
Capital expenditures	(25,683)	(16,017)	(70,083)
Proceeds from sale of property, plant and equipment	2,289	6,733	6,191
Capitalized software	(1,039)	(1,537)	(1,413)
Acquisition spending, net of cash acquired	(149)	(500)	(75,479)
Short-term investments – net	—	—	(250)
Purchase of long-term investments	(15,040)	(9,710)	(10,650)
Sales or maturities of long-term investments	10,624	33,872	20,158
Other – net	3,945	440	—
<b>Net cash flows from (to) investing activities</b>	<b>(25,053)</b>	<b>13,281</b>	<b>(131,526)</b>
<b>Net Cash Flows From (To) Financing Activities:</b>			
Purchase of HNI Corporation common stock	(17,817)	—	(28,553)
Proceeds from long-term debt	50,157	97,000	359,500
Payments of note and long-term debt and other financing	(54,241)	(219,884)	(334,200)
Proceeds from sale of HNI Corporation common stock	3,004	2,893	4,151
Excess tax benefits from stock compensation	25	8	11
Dividends paid	(38,737)	(38,667)	(38,095)
<b>Net cash flows from (to) financing activities</b>	<b>(57,609)</b>	<b>(158,650)</b>	<b>(37,186)</b>
<b>Net increase (decrease) in cash and cash equivalents</b>	<b>11,722</b>	<b>47,836</b>	<b>5,657</b>
<b>Cash and cash equivalents at beginning of year</b>	<b>87,374</b>	<b>39,538</b>	<b>33,881</b>
<b>Cash and cash equivalents at end of year</b>	<b>\$ 99,096</b>	<b>\$ 87,374</b>	<b>\$ 39,538</b>
<b>Supplemental Disclosures of Cash Flow Information:</b>			
Cash paid during the year for:			
Interest	12,062	\$ 12,316	\$ 17,160
Income taxes	7,079	\$ (4,528)	\$ 22,852

*The accompanying notes are an integral part of the consolidated financial statements.*

**HNI CORPORATION and subsidiaries**  
**Notes to Consolidated Financial Statements**

**Nature of Operations**

HNI Corporation with its subsidiaries (the "Corporation"), is a provider of office furniture and hearth products. Both industries are reportable segments; however, the Corporation's office furniture business is its principal line of business. Refer to Operating Segment Information for further information. Office furniture products are sold through a national system of dealers, wholesalers and national office product distributors and directly to end-user customers and federal and state governments. Dealers and wholesalers are the major channels based on sales. Hearth products include a full array of gas, electric, and wood burning fireplaces, inserts, stoves, facings and accessories. These products are sold through a national system of dealers and distributors, as well as Corporation-owned distribution and retail outlets. The Corporation's products are marketed predominantly in the United States and Canada. The Corporation exports select products to a limited number of markets outside North America, principally Latin America and the Caribbean, through its export subsidiary and manufactures and markets office furniture in Asia; however, based on sales, these activities are not significant.

**Summary of Significant Accounting Policies**

*Principles of Consolidation and Fiscal Year-End*

The consolidated financial statements include the accounts and transactions of the Corporation and its subsidiaries. Intercompany accounts and transactions have been eliminated in consolidation.

The Corporation follows a 52/53 week fiscal year which ends on the Saturday nearest December 31. Fiscal year 2010 ended on January 1, 2011; 2009 ended on January 2, 2010; and 2008 ended on January 3, 2009. The financial statements for fiscal years 2010 and 2009 are on a 52-week basis; while the financial statements for fiscal 2008 are on a 53-week basis. A 53-week year occurs approximately every sixth year.

*Cash, Cash Equivalents and Investments*

Cash and cash equivalents generally consist of cash and money market accounts. The fair value approximates the carrying value due to the short duration of the securities. These securities have original maturity dates not exceeding three months. The Corporation has short-term investments with maturities of less than one year and also has investments with maturities greater than one year included in Other Assets on the Consolidated Balance Sheets. Management classifies investments in marketable securities at the time of purchase and reevaluates such classification at each balance sheet date. Equity securities are classified as available-for-sale and stated at current market value with unrealized gains and losses included as a separate component of equity, net of any related tax effect. The Corporation recognized \$1.5 million of other than temporary impairments on these investments during 2008 due to the length of time and extent of which the market value was below cost and current financial conditions. These investments were sold in 2009 resulting in a loss of \$0.2 million. Debt securities including government and corporate bonds are classified as available-for-sale and stated at current market value with unrealized gains and losses included as a separate component of equity, net of any related tax effect. Certain debt securities were reclassified to trading securities at the end of 2008 due to the Corporation's intentions to sell. A loss of \$41,000 was recognized on these securities. These debt securities were sold in 2009 resulting in a gain of \$59,000. The specific identification method is used to determine realized gains and losses on the trade date. The Corporation has invested in an investment fund in which the Corporation's ownership in this investment fund is such that the underlying investments are recorded at fair market value through the income statement.

At January 1, 2011, January 2, 2010 and January 3, 2009, cash, cash equivalents and investments consisted of the following:

**Year-End 2010**

(In thousands)	Cash and cash equivalents	Short-term investments	Long-term investments
<b>Held-to-maturity securities</b>			
Certificates of deposit	\$ —	\$ 255	\$ —
<b>Available-for-sale securities</b>			
Debt securities		9,607	
<b>Investment in target fund</b>	—	705	—
<b>Cash and money market accounts</b>	99,096	—	—
<b>Total</b>	\$ 99,096	\$ 10,567	\$ —

**Year-End 2009**

(In thousands)	Cash and cash equivalents	Short-term investments	Long-term investments
<b>Held-to-maturity securities</b>			
Certificates of deposit	\$ —	\$ 250	\$ —
<b>Investment in target fund</b>			
		5,744	—
<b>Cash and money market accounts</b>			
	87,374		
<b>Total</b>	\$ 87,374	\$ 5,994	\$ —

**Year-End 2008**

(In thousands)	Cash and cash equivalents	Short-term investments	Long-term investments
<b>Trading securities</b>			
Debt securities	\$ —	\$ —	\$ 1,541
<b>Held-to-maturity securities</b>			
Certificates of deposit	—	—	250
Debt securities	—	—	181
<b>Available for sale securities</b>			
Equity securities	—	—	1,974
<b>Investment in target fund</b>			
	—	9,750	15,297
<b>Cash and money market accounts</b>			
	39,538	—	—
<b>Total</b>	\$ 39,538	\$ 9,750	\$ 19,243

*Receivables*

Accounts receivable are presented net of allowance for doubtful accounts of \$5.5 million, \$6.4 million and \$8.8 million, for 2010, 2009 and 2008, respectively. The allowance is developed based on several factors including overall customer credit quality, historical write-off experience, and specific account analyses projecting the ultimate collectibility of the account. As such, these factors may change over time causing the reserve level to adjust accordingly.

*Inventories*

The Corporation valued 77%, 82% and 83% of its inventory by the LIFO method at January 1, 2011, January 2, 2010 and January 3, 2009, respectively. During 2010, 2009 and 2008, inventory quantities were reduced at certain reporting units. This reduction resulted in a liquidation of LIFO inventory quantities carried at lower costs prevailing in prior years as compared with the cost of current year purchases, the effect of which decreased cost of goods sold by approximately \$1.5 million, \$2.4 million and \$3.7 million in 2010, 2009 and 2008, respectively.

*Property, Plant and Equipment*

Property, plant and equipment are carried at cost. Depreciation has been computed using the straight-line method over estimated useful lives: land improvements, 10 – 20 years; buildings, 10 – 40 years; and machinery and equipment, 3 – 12 years.

*Long-Lived Assets*

Long-lived assets are reviewed for impairment as events or changes in circumstances occur indicating the amount of the asset reflected in the Corporation's balance sheet may not be recoverable. An estimate of undiscounted cash flows produced by the asset, or the appropriate group of assets, is compared to the carrying value to determine whether impairment exists. The estimates of future cash flows involve considerable management judgment and are based upon assumptions about expected future operating performance. The actual cash flows could differ from management's estimates due to changes in business conditions, operating performance and economic conditions. Asset impairment charges recorded in connection with the Corporation's restructuring activities are discussed in Restructuring Related Charges. These assets included real estate, manufacturing equipment and certain other fixed assets. The Corporation's continuous focus on improving the manufacturing process tends to increase the likelihood of assets being replaced; therefore, the Corporation is regularly evaluating the expected lives of its equipment and accelerating depreciation where appropriate.

### *Goodwill and Other Intangible Assets*

The Corporation evaluates its goodwill for impairment on an annual basis during the fourth quarter or whenever indicators of impairment exist. The Corporation estimates the fair value of its reporting units using various valuation techniques, with the primary technique being a discounted cash flow method. Determining the fair value of a reporting unit involves the use of significant estimates and assumptions. Management bases its fair value estimates on assumptions it believes to be reasonable at the time, but such assumptions are subject to inherent uncertainty. Actual results may differ from those estimates.

The Corporation also determines the fair value of indefinite-lived trade names on an annual basis or whenever indications of impairment exist. The Corporation estimates the fair value of the trade names based on a discounted cash flow model using inputs which include projected revenues from management's long-term plan, assumed royalty rates that could be payable if the trade names were not owned and a discount rate. Determining the fair value of a trade name involves the use of significant estimates and assumptions. Actual results may differ from those estimates.

The Corporation has definite-lived intangibles that are amortized over their estimated useful lives. Impairment losses are recognized if the carrying amount of an intangible, subject to amortization, is not recoverable from expected future cash flows and its carrying amount exceeds its fair value. Intangibles, net of amortization, of approximately \$52 million are included in other assets on the consolidated balance sheet as of the end of fiscal 2010.

See Goodwill and Other Intangible Assets footnote for further information.

### *Product Warranties*

The Corporation issues certain warranty policies on its furniture and hearth products that provide for repair or replacement of any covered product or component failing during normal use because of a defect in design, materials or workmanship. A warranty reserve is determined by recording a specific reserve for known warranty issues and an additional reserve for unknown claims expected to be incurred based on historical claims experience. Actual claims incurred could differ from the original estimates, requiring adjustments to the reserve. Activity associated with warranty obligations was as follows:

(In thousands)	2010	2009	2008
Balance at the beginning of the period	\$ 12,684	\$ 13,948	\$ 12,123
Accrual assumed from acquisition	—	—	250
Accruals for warranties issued during the period	15,747	13,111	20,008
Accrual related to pre-existing warranties	1,223	(357)	1,368
Settlements made during the period	<u>(16,724)</u>	<u>(14,018)</u>	<u>(19,801)</u>
Balance at the end of the period	\$ 12,930	\$ 12,684	\$ 13,948

### *Revenue Recognition*

Sales of office furniture and hearth products are generally recognized when title transfers and the risks and rewards of ownership have passed to customers. Typically title and risk of ownership transfer when the product is shipped. In certain circumstances, title and risk of ownership do not transfer until the goods are received by the customer or upon installation and customer acceptance. Revenue includes freight charged to customers; related costs are recorded in selling and administrative expense. Rebates, discounts and other marketing program expenses directly related to the sale are recorded as a reduction to net sales. Marketing program accruals require the use of management estimates and the consideration of contractual arrangements subject to interpretation. Customer sales that achieve or do not achieve certain award levels can affect the amount of such estimates and actual results could differ from these estimates.

### *Product Development Costs*

Product development costs relating to development of new products and processes, including significant improvements and refinements to existing products, are expensed as incurred. These costs include salaries, contractor fees, building costs, utilities and administrative fees. The amounts charged against income were \$21.8 million in 2010, \$21.1 million in 2009 and \$27.8 million in 2008 and were recorded in Selling and Administrative Expenses on the Consolidated Statements of Income.

### *Freight Expense*

The Corporation records freight expense to customers in Selling and Administrative Expenses on the Consolidated Statements of Income. Amounts recorded were \$97.8 million in 2010, \$96.6 million in 2009 and \$168.4 million in 2008.

### *Stock-Based Compensation*

The Corporation measures the cost of employee services in exchange for an award of equity instruments based on the grant-date fair value of the award and recognizes cost over the requisite service period. See the Stock-Based Compensation footnote for further information.

### *Income Taxes*

The Corporation uses an asset and liability approach that requires the recognition of deferred tax assets and liabilities for the expected future tax consequences of events that have been recognized in the Corporation's financial statements or tax returns. Deferred income taxes are provided to reflect differences between the tax bases of assets and liabilities and their reported amounts in the financial statements. The Corporation provides for taxes that may be payable if undistributed earnings of overseas subsidiaries were to be remitted to the United States, except for those earnings it considers to be permanently reinvested. There were approximately \$15.7 million of accumulated earnings considered permanently reinvested as of January 1, 2011. See the Income Tax footnote for further information.

### *Earnings Per Share*

Basic earnings per share are based on the weighted-average number of common shares outstanding during the year. Shares potentially issuable under stock options, restricted stock units and common stock equivalents under the Corporation's deferred compensation plans have been considered outstanding for purposes of the diluted earnings per share calculation.

The following table reconciles the numerators and denominators used in the calculation of basic and diluted earnings per share (EPS):

(In thousands, except per share data)	2010	2009	2008
Numerators:			
Numerators for both basic and diluted EPS net income (loss) attributable to parent company	\$ 26,941	\$ (6,442)	\$ 45,450
Denominators:			
Denominator for basic EPS weighted- average common shares outstanding	44,994	44,889	44,310
Potentially dilutive shares from stock option plans	815	—	124
Denominator for diluted EPS	45,809	44,889	44,434
Earnings per share – basic	\$ 0.60	\$ (0.14)	\$ 1.03
Earnings per share – diluted	\$ 0.59	\$ (0.14)	\$ 1.02

Certain exercisable and non-exercisable stock options were not included in the computation of diluted EPS for fiscal years 2010 and 2008, because inclusion would have been anti-dilutive. The number of stock options outstanding, which met this criterion for 2010 was 1,439,911 and for 2008 was 1,350,886.

None of the outstanding stock options, restricted stock units or deferred common stock equivalents were included in the computation of diluted EPS for fiscal year 2009, as all would be anti-dilutive due to the current period loss.

### *Use of Estimates*

The preparation of financial statements in conformity with accounting principles generally accepted in the United States requires management to make estimates and assumptions that affect the amounts reported in the financial statements and accompanying notes. The more significant areas requiring use of management estimates relate to allowance for doubtful accounts, inventory reserves, marketing program accruals, warranty accruals, accruals for self-insured medical claims, workers' compensation, legal contingencies, general liability and auto insurance claims, valuation of long-lived assets, and useful lives for depreciation and amortization. Actual results could differ from those estimates.

### *Self-Insurance*

The Corporation is partially self-insured for general, auto and product liability, workers' compensation, and certain employee health benefits. The general, auto, product and workers' compensation liabilities are managed using a wholly owned insurance captive; the related liabilities are included in the accompanying consolidated financial statements. As of January 1, 2011, these liabilities totaled \$26.2 million. The Corporation's policy is to accrue amounts in accordance with the actuarially determined liabilities. The actuarial valuations are based on historical information along with certain assumptions about future

events. Changes in assumptions for such matters as legal actions, medical cost inflation and magnitude of change in actual experience development could cause these estimates to change in the future.

#### *Foreign Currency Translations*

Foreign currency financial statements of foreign operations where the local currency is the functional currency are translated using exchange rates in effect at period end for assets and liabilities and average exchange rates during the period for results of operations. Related translation adjustments are reported as a component of Shareholders' Equity. Gains and losses on foreign currency transactions are included in the "Selling and administrative expenses" caption of the Consolidated Statements of Income.

#### *Reclassifications*

Prior periods Statements of Income have been restated for discontinued operations. Certain reclassifications have been made within the footnotes to conform to the current year presentation.

#### *Recent Accounting Pronouncements*

In December 2007, the FASB issued new guidance which requires a noncontrolling interest in a subsidiary to be reported as equity and the amount of consolidated net income specifically attributable to the noncontrolling interest be identified in the consolidated financial statements. It also requires consistency in the manner of reporting changes in the parent's ownership interest and requires fair value measurement of any noncontrolling equity investment retained in a deconsolidation. The Corporation adopted the guidance January 4, 2009, the beginning of fiscal 2009. As a result of the adoption, the Corporation has reported noncontrolling interests as a component of equity in its Consolidated Balance Sheets and the net income or loss attributable to noncontrolling interests has been separately identified in its Consolidated Statements of Income. The prior periods presented have also been reclassified to conform to the current classification requirements.

In March 2008, the FASB expanded the disclosure requirements for derivative instruments and hedging activities with the intent to provide users of financial statements with an enhanced understanding of an entity's derivative activity. The Corporation adopted the new guidance as of January 4, 2009.

In June 2009, the FASB issued guidance that identifies the sources of accounting principles and the framework for selecting principles used in the preparation of financial statements of nongovernmental entities that are presented in conformity with US GAAP (the GAAP hierarchy). The Corporation adopted the new guidance beginning October 3, 2009. This guidance had no impact on the Corporation's financial statements.

#### **Restructuring Related and Impairment Charges**

During 2010, the Corporation made the decision to close an office furniture facility in Salisbury, North Carolina and consolidate production into existing office furniture manufacturing facilities. In connection with the closure of this facility, the Corporation recorded \$4.2 million of pre-tax charges which included \$2.3 million of accelerated depreciation of buildings, machinery and equipment recorded in cost of sales and \$1.9 million of severance and facility exit costs recorded as restructuring costs in 2010.

During 2010, the Corporation completed the shutdown of three office furniture facilities in South Gate, California; Louisburg, North Carolina; and Owensboro, Kentucky and consolidated production into existing office furniture manufacturing facilities. The Corporation announced and started these activities during 2009. In connection with the closure of these facilities, the Corporation recorded \$12.6 million of pre-tax charges which included \$2.7 million of accelerated depreciation of machinery and equipment recorded in cost of sales and \$9.9 million of severance and facility exit costs recorded as restructuring costs in 2009. During 2010, the Corporation incurred \$2.0 million of current period charges which included \$0.3 million of accelerated depreciation of machinery and equipment recorded in cost of sales and \$1.6 million of other costs recorded as restructuring costs.

The Corporation made the decision to close certain hearth products retail and distribution locations during the fourth quarter of 2010. A pre-tax charge of \$0.2 million was recorded for severance and facility exit costs.

During 2010, the Corporation completed the consolidation of significant production from its hearth products Mount Pleasant, Iowa plant to other existing hearth products manufacturing facilities. Additionally the Corporation completed the closure of hearth products distribution centers in Alsip, Illinois and Lake City, Minnesota and transferred operations to its Mount Pleasant facility. The Corporation's hearth products segment disposed and consolidated several retail and distribution locations during 2009. In connection with these activities, the Corporation recorded \$6.7 million of pre-tax charges which included \$1.2 million of accelerated depreciation of machinery and equipment recorded in cost of sales and \$5.5 million of severance and facility exit costs recorded as restructuring costs in 2009. These included accelerated depreciation of \$1.4 million and write-off of goodwill



of \$0.6 million, which were non-cash transactions. During 2010, the Corporation incurred \$0.1 million of current period charges recorded as restructuring costs.

During 2008, the Corporation completed the shutdown of an office furniture facility in Richmond, Virginia, consolidated production into other manufacturing locations, closed two distribution centers and started up a new distribution center. The Corporation announced and started these activities during third quarter 2007. During 2008, the Corporation incurred \$4.2 million of current period charges which included \$0.4 million of accelerated depreciation of machinery and equipment recorded in cost of sales and \$3.8 million of other costs recorded as restructuring costs.

The Corporation's hearth products segment consolidated some of its service and distribution locations during 2007. In connection with those consolidations, the Corporation incurred \$0.3 million of current period charges during 2008 recorded as restructuring costs.

The following table summarizes the restructuring accrual activity since the beginning of fiscal 2008.

(In thousands)	Severance Costs	Facility Termination & Other Costs	Total
Restructuring reserve at December 29, 2007	\$ 3,858	\$ 990	\$ 4,848
Restructuring charges	(135)	4,197	4,062
Cash payments	(3,568)	(4,963)	(8,531)
Restructuring reserve at January 3, 2009	\$ 155	\$ 224	\$ 379
Restructuring charges	8,168	5,166	13,334
Cash payments	(3,934)	(3,821)	(7,755)
Restructuring reserve at January 2, 2010	\$ 4,389	\$ 1,569	\$ 5,958
Restructuring charges	1,768	2,134	3,902
Cash Payments	(3,768)	(3,460)	(7,228)
Restructuring reserve At January 1, 2011	\$ 2,389	\$ 243	\$ 2,632

The Corporation made the decision to sell certain hearth products distribution locations during the fourth quarter of 2010. The assets to be sold were moved to held for sale, and the Corporation recorded an impairment charge of \$5.0 million to reduce the value of the business units to fair market value. See Goodwill and Other Intangible Assets footnote for more information. The Corporation also recorded \$0.5 million of impairment charges in 2010 related to adjusting excess land held for sale to fair market value. These charges were included in the "Restructuring Related and Impairment Charges" line item on the Consolidated Statements of Income.

The Corporation recorded \$25.0 million and \$21.8 million of goodwill and trade name impairment charges in 2009 and 2008, respectively, included in the "Restructuring Related and Impairment Charges" line item on the Consolidated Statements of Income, as a result of its annual impairment testing. See Goodwill and Other Intangible Assets footnote for more information.

### Business Combinations

The Corporation completed the acquisition of HBF, a leading provider of premium upholstered seating, textiles, wood tables and wood case goods for the office environment on March 29, 2008 for a purchase price of approximately \$75 million. The transaction was funded on March 31, 2008 with the proceeds of the Corporation's revolving credit facility. The Corporation finalized the allocation of the purchase price during the fourth quarter of 2008. There were approximately \$32.7 million of intangible assets other than goodwill associated with this acquisition. Of these acquired intangible assets, \$19.8 million was assigned to a trade name not subject to amortization. The remaining \$12.9 million have estimated useful lives ranging from four to twenty years with amortization recorded based on the projected cash flow associated with the respective intangible assets' existing relationship. There was approximately \$33.0 million of goodwill associated with this acquisition assigned to the office furniture segment. The goodwill is deductible for income tax purposes.

The Corporation completed the acquisition of Harman, a privately held domestic manufacturer of free-standing stoves and fireplace inserts, as well as two small office furniture dealers during 2007. The combined purchase price of these acquisitions less cash acquired totaled \$40.9 million. The Corporation finalized the allocation of the purchase price for the Harman acquisition in 2008. A reclassification of \$4.2 million between goodwill and other intangible assets occurred in 2008 based on

the final valuation report for the Harman acquisition. There are approximately \$5.7 million of intangibles associated with these acquisitions. Of these acquired intangibles, \$2.5 million was assigned to trade names not subject to amortization. The remaining \$3.2 million have estimated useful lives ranging from one to fifteen years with amortization recorded based on the projected cash flow associated with the respective intangible assets' existing relationships. There is approximately \$4.4 million of goodwill associated with these acquisitions of which \$3.6 million was assigned to the office furniture segment and \$0.8 million was assigned to the hearth products segment. All goodwill is deductible for income tax purposes.

The results of the acquired entities have been included in the Consolidated Financial Statements since the date of acquisition.

### Discontinued Operations

The Corporation completed the sale of a small, non-core business in the office furniture segment and a small non-core component of its hearth products segment during 2010. Revenues and expenses associated with these business operations are presented as discontinued operations for all periods presented in the financial statements.

Summarized financial information for discontinued operations is as follows:

(in thousands)	2010	2009	2008
Discontinued Operations:			
Operating profit (loss) before tax	\$ (794)	\$ (4,590)	\$ (7,482)
Income tax provision (benefit)	(315)	71	(2,383)
Net profit (loss) from discontinued operations	(479)	(4,661)	(5,099)
Impairment Loss on Discontinued Operations:			
Impairment loss on discontinued operations before tax	(3,674)	—	—
Income tax provision (benefit)	(1,595)	—	—
Net impairment loss on discontinued operations	(2,079)	—	—
Loss from discontinued operations, net of income tax	\$ (2,558)	\$ (4,661)	\$ (5,099)

### Inventories

(In thousands)	2010	2009	2008
Finished products	\$ 43,389	\$ 48,198	\$ 51,807
Materials and work in process	49,404	40,322	60,155
LIFO reserve	(23,837)	(23,376)	(27,672)
	\$ 68,956	\$ 65,144	\$ 84,290

### Property, Plant, and Equipment

(In thousands)	2010	2009	2008
Land and land improvements	\$ 21,554	\$ 21,815	\$ 23,753
Buildings	257,819	267,596	277,898
Machinery and equipment	474,911	490,287	525,996
Construction and equipment installation in progress	10,221	8,377	21,738
	764,505	788,075	849,385
Less: accumulated depreciation	532,724	527,973	533,779
	\$ 231,781	\$ 260,102	\$ 315,606

### **Goodwill and Other Intangible Assets**

The Corporation evaluates its goodwill for impairment on an annual basis during the fourth quarter or whenever indicators of impairment exist. The Corporation estimates the fair value of its reporting units using various valuation techniques, with the primary technique being a discounted cash flow analysis. The Corporation has eleven reporting units within its office furniture and hearth products operating segments, of which seven contained goodwill during the fourth quarter analysis. These reporting units constitute components for which discrete financial information is available and regularly reviewed by segment management. Determining the fair value of a reporting unit involves the use of significant estimates and assumptions. The estimate of fair value of each reporting unit is based on management's projection of revenues, gross margin, operating costs and cash flows considering historical and estimated future results, general economic and market conditions as well as the impact of planned business and operational strategies. The valuations employ present value techniques to measure fair value and consider market factors. Management believes the assumptions used for the impairment test are consistent with those utilized by a market participant in performing similar valuations of its reporting units. A separate discount rate was utilized for each reporting unit with rates ranging from 10.5% to 11.5%. Management bases its fair value estimates on assumptions they believe to be reasonable at the time, but such assumptions are subject to inherent uncertainty. Actual results may differ from those estimates. In addition, for reasonableness, the summation of all the reporting units' fair values is compared to the Corporation's market capitalization.

If the fair value of the reporting unit is less than its carrying value, an additional step is required to determine the implied fair value of goodwill associated with that reporting unit. The implied fair value of goodwill is determined by first allocating the fair value of the reporting unit to all of its assets and liabilities and then computing the excess of the reporting unit's fair value over the amounts assigned to the assets and liabilities. If the carrying value of goodwill exceeds the implied fair value of goodwill, such excess represents the amount of goodwill impairment, and, accordingly such impairment is recognized.

As a result of the review performed in the fourth quarter of 2010, the Corporation determined the fair value of its reporting units exceeds the carrying value and, therefore, no impairment of goodwill was recorded. The Corporation recorded \$7 million of impairment charges in 2009. The reporting unit impacted was an office furniture manufacturing unit acquired in 2008. The Corporation recorded \$17 million of impairment charges in 2008. The reporting units impacted included an office furniture services unit, dealer distribution unit, and a recent acquisition with goodwill charges of approximately \$10 million, \$5 million and \$2 million, respectively.

The significant estimates and assumptions used in estimating future cash flows of the Corporation's reporting units are based on management's view of longer-term broad market trends. Management combines this trend data with estimates of current economic conditions in the U.S., competitor behavior, the mix of products sales, commodity costs, wage rates, the level of manufacturing capacity, and the pricing environment. In addition, estimates of fair value are impacted by estimates of the market participant derived weighted average cost of capital. As a reasonableness test, management also compared the market capitalization of the Corporation at January 1, 2011 to the aggregate fair value of the reporting units, resulting in an implied control premium of approximately five percent.

The Corporation has one reporting unit where the fair value only exceeds the carrying value by two percent. There is approximately \$24 million of goodwill associated with this reporting unit. While management does not believe impairment is probable, the performance of this business requires continued improvement in future periods to sustain its carrying value. Holding the other valuation assumptions constant, a downward shift in future operating profits of two percent across all periods from projected levels would indicate the carrying value of the business may be in excess of the fair value. The amount of any impairment is dependent on the performance of the business which is dependent upon a number of variables which cannot be predicted with certainty.

The Corporation also owns trade names having a net value of \$41.0 million as of January 1, 2011, \$42.1 million as of January 2, 2010, and \$60.6 million as of January 3, 2009. The trade names are deemed to have an indefinite useful life because they are expected to generate cash flow indefinitely. The Corporation determines the fair value of indefinite-lived trade names on an annual basis during the fourth quarter or whenever indication of impairment exists. The Corporation performed its fiscal 2010 assessment of indefinite-lived trade names during the fourth quarter. The estimate of the fair value of the trade names was based on a discounted cash flow model using inputs which included: projected revenues from management's long-term plan, assumed royalty rates that could be payable if the trade names were not owned and a discount rate. As a result of the review the Corporation determined the fair value of all trade names exceed their carrying value. The Corporation did record an impairment charge of \$1.1 million due to the sale of a non-core business in the office furniture segment which was included in discontinued operations on the Consolidated Statements of Income. The Corporation recorded a \$18 million and a \$5 million impairment charge for certain office furniture trade names in 2009 and 2008, respectively.

The table below summarizes amortizable definite-lived intangible assets, which are reflected in Other Assets in the Corporation's Consolidated Balance Sheets:

(In thousands)	2010		2009		2008
Patents	\$	18,605	\$	19,325	\$ 19,325
Customer lists and other		107,964		115,451	115,664
Less: accumulated amortization		70,139		68,004	56,098
Less: impairments		4,879		—	—
<b>Net intangible assets</b>	<b>\$</b>	<b>51,551</b>	<b>\$</b>	<b>66,772</b>	<b>\$ 78,891</b>

The Corporation made the decision to sell certain hearth products retail and distribution locations during the fourth quarter of 2010. The assets to be sold were moved to held for sale, and the Corporation recorded an impairment charge of \$4.9 million to adjust the carrying value of customer lists to fair market value. The Corporation also recorded an impairment charge of \$2.0 million due to the sale of a non-core business in the office furniture segment which was included in discontinued operations in the Consolidated Statements of Income.

Amortization expense for definite-lived intangibles for 2010, 2009 and 2008, was \$8.4 million, \$12.1 million and \$10.3 million, respectively and was recorded in Selling and Administrative Expenses on the Consolidated Statements of Income. Based on the current amount of intangible assets subject to amortization, the estimated amortization expense for each of the following five fiscal years is as follows:

(in millions)	2011		2012		2013		2014		2015
Amortization expense	\$	5.7	\$	5.1	\$	4.7	\$	4.1	3.8

The occurrence of events such as acquisitions, dispositions or impairments in the future may result in changes to amounts.

The changes in the carrying amount of goodwill since December 29, 2007, are as follows by reporting segment:

(In thousands)	Office Furniture	Hearth Products	Total
<hr/>			
Balance as of December 29, 2007			
Goodwill	\$ 90,928	\$ 171,560	\$ 262,488
Accumulated impairment losses	(5,654)	—	(5,654)
	<hr/>	<hr/>	<hr/>
	85,274	171,560	256,834
Goodwill acquired during the year	33,020	—	33,020
Impairment losses	(16,955)	—	(16,955)
Goodwill related to the sale of business units	—	(355)	(355)
Final purchase price allocations/contingent payments from prior year acquisitions	—	(4,152)	(4,152)
	<hr/>	<hr/>	<hr/>
Balance as of January 3, 2009			
Goodwill	123,948	167,053	291,001
Accumulated impairment losses	(22,609)	—	(22,609)
	<hr/>	<hr/>	<hr/>
	101,339	167,053	268,392
Goodwill acquired during the year	—	—	—
Impairment losses	(6,750)	—	(6,750)
Goodwill related to the sale of business units	—	(1,028)	(1,028)
Final purchase price allocations/contingent payments from prior year acquisitions	—	500	500
	<hr/>	<hr/>	<hr/>
Balance as of January 2, 2010			
Goodwill	123,948	166,525	290,473
Accumulated impairment losses	(29,359)	—	(29,359)
	<hr/>	<hr/>	<hr/>
	94,589	166,525	261,114
Goodwill acquired during the year	—	—	—
Impairment losses	—	(143)	(143)
Goodwill related to the sale of business units	—	(486)	(486)
Final purchase price allocations/contingent payments from prior year acquisitions	—	149	149
	<hr/>	<hr/>	<hr/>
Balance as of January 1, 2011			
Goodwill	123,948	166,188	290,136
Accumulated impairment losses	(29,359)	(143)	(29,502)
	<hr/>	<hr/>	<hr/>
	\$ 94,589	\$ 166,045	\$ 260,634
	<hr/>	<hr/>	<hr/>

The goodwill increases relate to acquisitions completed. See the Business Combinations note. The decreases in goodwill in the office furniture segment in 2009 and 2008 were due to impairment charges described above. The impairment loss recorded in the hearth products segment in 2010 relates to adjusting the carrying value of a business unit held for sale as of the end of 2010 to fair market value. The remaining decreases in the hearth products segment relate to the sale of a few small service and distribution locations and final purchase price allocations for previous acquisitions.

**Accounts Payable and Accrued Expenses**

(In thousands)	2010	2009	2008
Trade accounts payable	\$ 123,601	\$ 114,448	\$ 96,820
Compensation	31,299	24,978	27,764
Profit sharing and retirement expense	18,971	19,668	26,905
Marketing expenses	27,685	26,391	51,786
Freight	13,757	15,972	11,586
Other accrued expenses	95,753	98,261	98,570
	\$ 311,066	\$ 299,718	\$ 313,431

**Long-Term Debt**

(In thousands)	2010	2009	2008
Note payable to bank, revolving credit facility with interest at a variable rate (2010-2.77%; 2009-0.54%; 2008-0.79%)	\$ 50,000	\$ 50,000	\$ 107,500
Note payable to bank, with interest at a fixed rate (2008-3.08%; 2007-5.03%)	—	—	14,294
Senior notes due in 2016 with interest at a fixed rate of 5.54% per annum.	150,000	150,000	150,000
Note payable to bank, with interest at a variable rate (2008-2.36%)	—	—	47,500
Industrial development revenue bonds, payable 2018 with interest at a variable rate (2008-1.40%; 2007-3.55%)	—	—	2,300
Other notes and amounts	—	—	—
Total debt	200,000	200,000	321,594
Less: current portion	50,000	—	54,294
Long-term debt	\$ 150,000	\$ 200,000	\$ 267,300

Aggregate maturities of long-term debt are as follows:

(In thousands)	
2011	\$ 50,000
2012	—
2013	—
2014	—
2015	—
Thereafter	\$ 150,000

On June 11, 2010, the Corporation replaced a \$300 million revolving credit facility entered into on January 28, 2005 with a new revolving credit facility that provided for a maximum borrowing of \$150 million subject to increase (to a maximum amount of \$250 million) or reduction from time to time according to the terms of the underlying credit agreement. Amounts borrowed under the credit agreement may be borrowed, repaid and reborrowed from time to time until June 11, 2014. The Corporation paid approximately \$1.6 million of debt issuance costs that are being amortized straight-line over the term of the credit agreement. As of January 1, 2011, \$50 million was outstanding under the revolving credit facility and classified as short-term.

On April 6, 2006, the Corporation refinanced \$150 million of borrowings outstanding under a revolving credit facility with 5.54 percent ten-year unsecured Senior Notes due in 2016 issued through the private placement debt market. Interest payments are due semi-annually on April 1 and October 1 of each year and the principal is due in a lump sum in 2016.

On June 30, 2008, the Corporation entered into a credit agreement which allowed for a one-time borrowing of \$50 million in the form of a term loan. The Corporation paid off the term loan during 2009.

Certain of the above borrowing arrangements include covenants which limit the assumption of additional debt and lease obligations. The Corporation has been and currently is in compliance with the covenants related to these debt agreements. The fair value of the Corporation's outstanding variable rate long-term debt obligations at year-end 2010 approximates the carrying value. The fair value of the Corporation's outstanding fixed rate long-term debt obligations is estimated to be \$156 million, slightly above the carrying value of \$150 million.

### Income Taxes

Significant components of the provision for income taxes including those related to noncontrolling interest and discontinued operations are as follows:

(In thousands)	2010	2009	2008
Current:			
Federal	\$ 5,530	\$ 5,400	\$ 18,165
State	2,176	(278)	2,402
Foreign	569	780	482
Current provision	8,275	5,902	21,049
Deferred:			
Federal	7,027	(5,065)	3,265
State	(331)	(2,673)	222
Foreign	(84)	422	(954)
Deferred provision	6,612	(7,316)	2,533
	\$ 14,887	\$ (1,414)	\$ 23,582

The differences between the actual tax expense (benefit) and tax expense (benefit) computed at the statutory U.S. Federal tax rate are explained as follows:

	2010	2009	2008
Federal statutory tax expense (benefit)	\$ 14,640	\$ (2,750)	\$ 24,161
State taxes, net of federal tax effect	1,199	(1,919)	1,813
Credit for increasing research activities	(839)	(1,100)	(1,700)
Deduction related to domestic production activities	(874)	(316)	(1,242)
Foreign income tax	485	1,202	543
Excludable foreign income	(1,151)	(670)	(1,096)
True-up of deferred tax items	—	2,137	436
Basis in subsidiary	—	4,378	(3,073)
Valuation allowance	1,149	(3,073)	3,073
Uncertain tax positions	558	636	814
Other tax credits	—	(213)	(400)
Other – net	(280)	274	254
Total income tax expense (benefit)	\$ 14,887	\$ (1,414)	\$ 23,583

The Corporation recorded additional deferred tax assets in 2008 for the tax basis in the stock of a subsidiary in excess of the net tax basis of the subsidiary's assets and liabilities. As a result of management's change in intent of potential disposition of this subsidiary, the deferred tax assets and related valuation allowance were reduced.

Deferred income taxes reflect the net tax effects of temporary differences between the carrying amounts of assets and liabilities for financial reporting purposes and the amounts used for income tax purposes.

Significant components of the Corporation's deferred tax liabilities and assets are as follows:

(In thousands)	2010	2009	2008
<b>Net long-term deferred tax liabilities:</b>			
Tax over book depreciation	\$ (450)	\$ 1,334	\$ (1,028)
Compensation	4,324	3,221	3,175
Stock-based compensation	4,086	2,775	2,257
Goodwill	(47,186)	(40,314)	(42,802)
Accrued post-retirement benefit obligations	5,459	5,214	4,975
Basis in subsidiary	—	—	5,314
Valuation allowance	(1,014)	—	(1,981)
Other – net	4,256	3,543	4,819
<b>Total net long-term deferred tax liabilities</b>	<b>(30,525)</b>	<b>(24,227)</b>	<b>(25,271)</b>
<b>Net current deferred tax assets:</b>			
Allowance for doubtful accounts	1,987	2,337	2,601
Vacation accrual	2,938	4,029	3,646
Inventory differences	3,730	3,845	3,878
Deferred income	(3,040)	(2,798)	(3,836)
Warranty accruals	4,861	4,742	5,177
Valuation allowance	(616)	—	(1,092)
Other – net	8,607	8,144	5,939
<b>Total net current deferred tax assets</b>	<b>18,467</b>	<b>20,299</b>	<b>16,313</b>
<b>Net deferred tax (liabilities) assets</b>	<b>\$ (12,058)</b>	<b>\$ (3,928)</b>	<b>\$ (8,958)</b>

At January 1, 2011, the Corporation has approximately \$30.6 million of U.S. state tax net operating losses and \$2.5 million of U.S. state tax credits which expire over the next twenty years.

A reconciliation of the beginning and ending amount of unrecognized tax benefits is as follows:

(in thousands)	2010	2009	2008
<b>Unrecognized tax benefits, beginning of period</b>	<b>\$ 3,446</b>	<b>\$ 3,646</b>	<b>\$ 2,839</b>
Increases (decreases) in positions taken in a prior period	78	(71)	796
Decreases in positions taken in a prior period	(73)	(500)	(52)
Increases in positions taken in a current period	571	651	834
Decrease due to settlements	—	(204)	(391)
Decrease due to lapse of statute of limitations	(829)	(76)	(380)
<b>Unrecognized tax benefits, end of period</b>	<b>\$ 3,193</b>	<b>\$ 3,446</b>	<b>\$ 3,646</b>

The amount of unrecognized tax benefits which would impact the Corporation's effective tax rate, if recognized, was \$2.9 million at January 1, 2011, \$3.2 million at January 2, 2010 and \$3.2 million at January 3, 2009.

The Corporation recognized interest accrued related to unrecognized tax benefits in interest expense and penalties in operating expenses consistent with the recognition of these items in prior reporting. Interest and penalties recognized in the Consolidated Statements of Income amounted to a benefit of \$0.1 million. The Corporation had recorded a liability for interest and penalties related to unrecognized tax benefits of \$0.4 million, \$0.4 million and \$0.4 million as of January 1, 2011, January 2, 2010, and January 3, 2009, respectively.

The Internal Revenue Service (the "IRS") has completed the examination of all federal income tax returns through 2003 with no issues pending or unresolved. The years 2007 through 2010 remain open for examination by the IRS. The years 2006 through 2010 are currently under examination or remain open to examination by several states.



As of January 1, 2011, it is reasonably possible the amount of unrecognized tax benefits may increase or decrease within the twelve months following the reporting date. These increases or decreases in the unrecognized tax benefits would be due to new positions that may be taken on income tax returns, settlement of tax positions and the closing of statutes of limitation. It is not expected any of the changes will be material individually or in total to the results or financial position of the Corporation.

### Derivative Financial Instruments

The Corporation uses derivative financial instruments to reduce its exposure to adverse fluctuations in interest rates and diesel fuel. On the date a derivative is entered into, the Corporation designates the derivative as (i) a fair value hedge, (ii) a cash flow hedge, (iii) a hedge of a net investment in a foreign operation, or (iv) a risk management instrument not designated for hedge accounting. The Corporation recognizes all derivatives on its Consolidated Balance Sheets at fair value.

#### *Interest Rate Risk*

In June 2008, the Corporation entered into an interest rate swap agreement, designated as a cash flow hedge, for purposes of managing its benchmark interest rate fluctuation risk. Under the interest rate swap agreement, the Corporation pays a fixed rate of interest and receives a variable rate of interest equal to the one-month LIBOR as determined on the last day of each monthly settlement period on an aggregated notional principal amount of \$50 million. The net amount paid or received upon monthly settlements is recorded as an adjustment to interest expense, while the effective change in fair value is recorded as a component of accumulated other comprehensive income in the equity section of the Corporation's Consolidated Balance Sheets. The interest rate swap agreement matures on May 27, 2011.

As of January 1, 2011, \$0.6 million of deferred net losses, net of tax, included in equity ("Accumulated other comprehensive income (loss)" in the Corporation's Condensed Consolidated Balance Sheet) related to this interest rate swap, are expected to be reclassified to current earnings ("Interest expense" in the Corporation's Condensed Consolidated Statements of Income) over the next twelve months.

#### *Diesel Fuel Risk*

The Corporation uses independent freight carriers to deliver its products. These carriers charge the Corporation a basic rate per mile that is subject to a mileage surcharge for diesel fuel price increases. The Corporation entered into variable to fixed rate commodity swap agreements beginning in April 2010 with two financial counterparties to manage fluctuations in fuel costs. The Corporation will hedge approximately 40% of its diesel fuel requirements for the next twelve months. The Corporation uses the hedge agreements to mitigate the volatility of diesel fuel prices and related fuel surcharges, and not to speculate the future price of diesel fuel. The hedge agreements are designed to add stability to the Corporation's costs, enabling the Corporation to make pricing decisions and lessen the economic impact of abrupt changes in diesel fuel prices over the term of the contract. The hedging instruments consist of a series of financially settled fixed forward contracts with expiration dates ranging up to twelve months. The contracts have been designated as cash flow hedges of future diesel purchases, and as such, the net amount paid or received upon monthly settlements is recorded as an adjustment to freight expense, while the effective change in fair value is recorded as a component of accumulated other comprehensive income in the equity section of the Corporation's Condensed Consolidated Balance Sheets.

As of January 1, 2011, \$0.2 million of deferred net gains, net of tax, included in equity ("Accumulated other comprehensive income (loss)" in the Corporation's Condensed Consolidated Balance Sheets) related to the diesel hedge agreements, are expected to be reclassified to current earnings ("Selling and administrative expense" in the Corporation's Condensed Consolidated Statements of Income) over the next twelve months.

The location and fair value of derivative instruments reported in the Corporation's Consolidated Balance Sheets are as follows (in thousands):

	Balance Sheet Location	Asset (Liability) Fair Value		
		2010	2009	2008
Interest rate swap	Accounts payable and accrued expenses	\$ (907)	\$ (1,922)	\$ (1,350)
Interest rate swap	Other long-term liabilities	—	(626)	(1,756)
Diesel fuel swap	Prepaid expenses and other current assets	277	—	—
		<u>\$ (630)</u>	<u>\$ (2,548)</u>	<u>\$ (3,106)</u>

The effect of derivative instruments on the Corporation's Consolidated Statements of Income for the year ended January 1, 2011 was as follows (in thousands):

Derivatives in Cash Flow Hedge Relationship	Before-tax Gain (Loss) Recognized in OCI on Derivative (Effective Portion)	Locations of Gain (Loss) Reclassified from AOCI into Income (Effective Portion)	Before-Tax Gain (Loss) Reclassified from AOCI Into Income (Effective Portion)	Locations of Gain (Loss) Recognized in Income on Derivative (Ineffective Portion)	Gain (Loss) Recognized in Income on Derivative (Ineffective Portion)
Interest rate swap	\$ (1,367)	Interest expense	\$ (2,088)	None	\$ —
Diesel fuel swap	669	Selling and administrative expense	(395)	Selling and administrative expense	2
Total	<u>\$ (698)</u>		<u>\$ (2,483)</u>		<u>\$ 2</u>

The effect of derivative instruments on the Corporation's Consolidated Statements of Income for the year ended January 2, 2010 was as follows (in thousands):

Derivatives in Cash Flow Hedge Relationship	Before-tax Gain (Loss) Recognized in OCI on Derivative (Effective Portion)	Locations of Gain (Loss) Reclassified from AOCI into Income (Effective Portion)	Before-Tax Gain (Loss) Reclassified from AOCI Into Income (Effective Portion)	Locations of Gain (Loss) Recognized in Income on Derivative (Ineffective Portion)	Gain (Loss) Recognized in Income on Derivative (Ineffective Portion)
Interest rate swap	<u>\$ (1,100)</u>	Interest expense	<u>\$ (1,658)</u>	None	<u>—</u>

The effect of derivative instruments on the Corporation's Consolidated Statements of Income for the year ended January 3, 2009 was as follows (in thousands):

Derivatives in Cash Flow Hedge Relationship	Before-tax Gain (Loss) Recognized in OCI on Derivative (Effective Portion)	Locations of Gain (Loss) Reclassified from AOCI into Income (Effective Portion)	Before-Tax Gain (Loss) Reclassified from AOCI Into Income (Effective Portion)	Locations of Gain (Loss) Recognized in Income on Derivative (Ineffective Portion)	Gain (Loss) Recognized in Income on Derivative (Ineffective Portion)
Interest rate swap	<u>\$ (3,183)</u>	Interest expense	<u>\$ (78)</u>	None	<u>—</u>

#### Fair Value Measurements of Financial Instruments

For recognition purposes, on a recurring basis, the Corporation is required to measure at fair value its marketable securities and its investment in target funds. The marketable securities were comprised of investments in government securities, corporate bonds and money market funds. The target funds are reported as both current and noncurrent assets based on the portion anticipated to be used for current operations. When available, the Corporation uses quoted market prices to determine fair value and classifies such measurements within Level 1. In some cases where market prices are not available, the Corporation makes use of observable market based inputs to calculate fair value, in which case the measurements are classified within Level 2.

Assets measured at fair value for the year ended January 1, 2011 were as follows:

(in thousands)	Fair value as of measurement date	Quoted prices in active markets for identical assets (Level 1)	Significant other observable inputs (Level 2)	Significant unobservable inputs (Level 3)
Investment in target funds	\$ 705	\$ —	\$ 705	\$ —
Government securities	\$ 8,364		\$ 8,364	\$ —
Corporate bonds	\$ 1,243	\$ —	\$ 1,243	\$ —
Derivative financial instrument	\$ (630)	\$ —	\$ (630)	\$ —

Assets measured at fair value for the year ended January 2, 2010 were as follows:

(in thousands)	Fair value as of measurement date	Quoted prices in active markets for identical assets (Level 1)	Significant other observable inputs (Level 2)	Significant unobservable inputs (Level 3)
Investment in target funds	\$ 5,744	\$ —	\$ 5,744	\$ —
Derivative financial instrument	\$ (2,548)	\$ —	\$ (2,548)	\$ —

Assets measured at fair value for the Corporation's fiscal year ended January 3, 2009 were as follows:

(in thousands)	Fair value as of measurement date	Quoted prices in active markets for identical assets (Level 1)	Significant other observable inputs (Level 2)	Significant unobservable inputs (Level 3)
Marketable securities	\$ 3,696	\$ 3,696	\$ —	\$ —
Investment in target funds	\$ 25,047	\$ —	\$ 25,047	\$ —
Derivative financial instrument	\$ (3,106)	\$ —	\$ (3,106)	\$ —

#### Shareholders' Equity

	2010	2009	2008
Common Stock, \$1 Par Value			
Authorized	200,000,000	200,000,000	200,000,000
Issued and outstanding	44,840,701	45,093,379	44,324,409
Preferred Stock, \$1 Par Value			
Authorized	2,000,000	2,000,000	2,000,000
Issued and outstanding	—	—	—

The Corporation purchased 655,032; 0; and 1,004,700 shares of its common stock during 2010, 2009 and 2008, respectively. The par value method of accounting is used for common stock repurchases. The excess of the cost of shares acquired over their par value is allocated to Additional Paid-In Capital with the excess charged to Retained Earnings on the Corporation's Consolidated Balance Sheet.

The following table reconciles net income to comprehensive income attributable to HNI Corporation:

(in thousands)	2010	2009	2008
Net income (loss)	\$ 27,123	\$ (6,259)	\$ 45,607
Other comprehensive income, net of income tax as applicable:			
Foreign currency translation adjustments	889	(94)	1,355
Change in unrealized gains (losses) on marketable securities	(48)	134	14
Change in pension and postretirement liability	397	745	(2,184)
Change in derivative financial instruments	1,195	348	(1,938)
Comprehensive income (loss)	29,556	(5,126)	42,854
Comprehensive income attributable to noncontrolling interest	182	183	157
Comprehensive income (loss) attributable to HNI Corporation	\$ 29,374	\$ (5,309)	\$ 42,697

The following table summarizes the components of accumulated other comprehensive loss and the changes in accumulated other comprehensive loss, net of tax as applicable:

(in thousands)	Foreign Currency Translation Adjustment	Unrealized Gains Losses) on Marketable Securities	Pension Postretirement Liability	Derivative Financial Instruments	Accumulated Other Comprehensive Loss
Balance at December 29, 2007	\$ 2,265	\$ (148)	\$ (1,271)	\$ —	\$ 846
Change during year	1,355	14	(2,184)	(1,938)	(2,753)
Balance at January 3, 2009	3,620	(134)	(3,455)	(1,938)	(1,907)
Change during year	(94)	134	745	348	1,133
Balance at January 2, 2010	3,526	—	(2,710)	(1,590)	(774)
Change during year	889	(48)	397	1,195	2,433
Balance at January 1, 2011	\$ 4,415	\$ (48)	\$ (2,313)	\$ (395)	\$ 1,659

In May 2007, the Corporation registered 300,000 shares of its common stock under its 2007 Equity Plan for Non-Employee Directors of HNI Corporation, as amended (the "Director Plan"). The Director Plan permits the Corporation to issue to its non-employee directors options to purchase shares of Corporation common stock, restricted stock or restricted stock units of the Corporation and awards of Corporation common stock. The Director Plan also permits non-employee directors to elect to receive all or a portion of their annual retainers and other compensation in the form of shares of Corporation common stock. During 2010, 2009, and 2008, 27,510; 39,914; and 31,599 shares, respectively, of Corporation common stock were issued under the Director Plan.

Cash dividends declared and paid per share for each year are:

(In dollars)	2010	2009	2008
Common shares	0.86	0.86	0.86

During 2002, shareholders approved the 2002 Members' Stock Purchase Plan (the "Purchase Plan"), as amended January 1, 2007. Under the plan, 800,000 shares of common stock were initially registered for issuance to participating members. On June 12, 2009, an additional 1,000,000 shares of common stock were registered for issuance to participating members. Beginning on June 30, 2002, rights to purchase stock are granted on a quarterly basis to all participating members who customarily work 20 hours or more per week and for five months or more in any calendar year. The price of the stock purchased under the Purchase Plan is 85% of the closing price on the exercise date. No member may purchase stock under the Purchase Plan in an amount which exceeds a maximum fair value of \$25,000 in any calendar year. During 2010, 94,925 shares of common stock were issued under the Purchase Plan at an average price of \$19.52. During 2009, 147,723 shares of common stock were issued under the plan at an average price of \$13.77. During 2008, 209,061 shares of common stock were issued under the Purchase Plan at an average price of \$17.90. An additional 828,471 shares were available for issuance under the Purchase Plan at January 1, 2011.

The Corporation has entered into change in control employment agreements with certain corporate officers and other key members. According to the agreements, a change in control occurs when a third person or entity becomes the beneficial owner of 20% or more of the Corporation's common stock, when more than one-third of the Board is composed of persons not recommended by at least three-fourths of the incumbent Board, upon certain business combinations involving the Corporation or, upon approval by the Corporation's shareholders of a complete liquidation or dissolution. Upon a change in control, a key member is deemed to have a two-year employment agreement with the Corporation, and all of his or her benefits vest under the Corporation's compensation plans. If, at any time within two years of the change in control, his or her employment is terminated by the Corporation for any reason other than cause or disability, or by the key member for good reason, as such terms are defined in the agreement, then the key member is entitled to receive, among other benefits, a severance payment equal to two times (three times for the Corporation's Chairman, President and CEO) annual salary and the average of the prior two years' bonuses.

### Stock-Based Compensation

Under the Corporation's 2007 Stock-Based Compensation Plan (the "Plan"), effective May 8, 2007, as amended, the Corporation may award options to purchase shares of the Corporation's common stock and grant other stock awards to executives, managers and key personnel. Upon shareholder approval of the Plan in May 2007, no future awards were granted under the Corporation's 1995 Stock-Based Compensation Plan, but all outstanding awards previously granted under that plan shall remain outstanding in accordance with their terms. As of January 1, 2011, there were approximately 2.3 million shares available for future issuance under the Plan. The Plan is administered by the Human Resources and Compensation Committee of the Board. Restricted stock units awarded under the Plan are expensed ratably over the vesting period of the awards. Stock options awarded to members under the Plan must be at exercise prices equal to or exceeding the fair market value of the Corporation's common stock on the date of grant. Stock options are generally subject to four-year cliff vesting and must be exercised within 10 years from the date of grant.

As discussed above, the Corporation also has the shareholder approved Purchase Plan. The price of the stock purchased under the Purchase Plan is 85% of the closing price on the applicable purchase date. During 2010, 94,925 shares of the Corporation's common stock were issued under the Purchase Plan at an average price of \$19.52.

The Corporation measures the cost of employee services in exchange for an award of equity instruments based on the grant-date fair value of the award and recognizes cost over the requisite service period.

Compensation cost charged against operations for the Plan and Purchase Plan described above was \$6.6 million, \$3.8 million and \$1.6 million for the years ended January 1, 2011, January 2, 2010 and January 3, 2009, respectively. The total income tax benefit recognized in the income statement for share-based compensation arrangements was \$2.3 million, \$1.3 million and \$0.5 million for the years ended January 1, 2011, January 2, 2010 and January 3, 2009, respectively.

The stock compensation expense for the years ended January 1, 2011, January 2, 2010 and January 3, 2009, was estimated on the date of grant using the Black-Scholes option-pricing model with the following assumptions by grant year:

	Year Ended Jan. 1, 2011	Year Ended Jan. 2, 2010	Year Ended Jan. 3, 2009
Expected term	6 years	7 years	7 years
Expected volatility:			
Range used	42.54%	33.83%	25.62% - 30.61%
Weighted-average	42.54%	33.83%	26.15%
Expected dividend yield:			
Range used	3.58%	4.00%	2.71% - 5.06%
Weighted-average	3.58%	4.00%	3.11%
Risk-free interest rate:			
Range used	4.02%	3.04%	3.48% - 4.62%

Expected volatilities are based on historical volatility as the Corporation does not feel that future volatility over the expected term of the options is likely to differ from the past. The Corporation used a simple-average calculation method based on monthly frequency points for the prior seven years. The Corporation normally uses the current dividend yield as there are no plans to substantially increase or decrease its dividends. For options issued in February 2009, the Corporation used the average dividend yield over the prior two years due to the large drop in the market at the date of grant resulting in an unsustainable

dividend yield. The Corporation uses historical exercise experience to determine the expected term. The risk-free interest rate was selected based on yields from U.S. Treasury zero-coupon issues with a remaining term equal to the expected term of the options being valued.

The following table summarizes the changes in outstanding stock options since the beginning of fiscal 2008.

	Number of Shares	Weighted- Average Exercise Price
Outstanding at December 29, 2007	1,043,066	\$ 38.72
Granted	560,786	28.70
Exercised	(19,500)	21.00
Forfeited	(119,293)	38.13
Outstanding at January 3, 2009	1,465,059	\$ 35.17
Granted	497,734	10.36
Exercised	(41,750)	18.31
Forfeited or Expired	(65,409)	31.22
Outstanding at January 2, 2010	1,855,634	\$ 29.03
Granted	776,159	23.99
Exercised	(53,216)	19.87
Forfeited or Expired	(13,778)	37.20
Outstanding at January 1, 2011	2,564,799	\$ 27.65

A summary of the Corporation's nonvested shares as of January 1, 2011 and changes during the year are presented below:

Nonvested Shares	Shares	Weighted- Average Grant-Date Fair Value
Nonvested at January 2, 2010	1,213,934	\$ 7.17
Granted	776,159	7.84
Vested	(124,102)	18.28
Forfeited	(4,476)	15.67
Nonvested at January 1, 2011	1,861,515	\$ 6.69

At January 1, 2011, there was \$5.4 million of unrecognized compensation cost related to nonvested stock option awards, which the Corporation expects to recognize over a weighted-average period of 1.4 years. Information about stock options vested or expected to vest and are exercisable at January 1, 2011, is as follows:

Options	Number	Weighted- Average Exercise Price	Weighted- Average Remaining Life in Years	Aggregate Intrinsic Value (\$000s)
Vested or expected to vest	2,393,652	\$ 21.42	4.1	\$ 23,410
Exercisable	703,284	\$ 38.95	3.2	—

The weighted-average grant-date fair value of options granted was \$7.84, \$2.53 and \$6.64, for 2010, 2009 and 2008, respectively. Other information for the last three years is as follows:

(In thousands)	Jan. 1, 2011	Jan. 2, 2010	Jan. 3, 2009
Total fair value of shares vested	\$ 2,083	\$ 1,911	\$ 2,358
Total intrinsic value of options exercised	526	312	222
Cash received from exercise of stock options	681	307	410
Tax benefit realized from exercise of stock options	180	109	79

In 2010 and 2009, the Corporation issued restricted stock units ("RSUs") to executives, managers and key personnel. The RSUs vest at the end of three years after the grant date. No dividends are accrued on the RSUs. The share-based compensation expense associated with the RSUs is based on the quoted market price of HNI Corporation shares on the date of grant less the discounted present value of dividends not received on the shares and is amortized using the straight-line method from the grant date through the earlier of the vesting date or the estimated retirement eligibility date.

The following table summarizes the changes in outstanding RSUs since the beginning of fiscal 2009:

	Number of Shares	Weighted- Average Grant Date Fair Value
Outstanding at January 3, 2009	—	
Granted	698,641	\$ 7.87
Vested	—	—
Forfeited	(17,685)	7.84
Outstanding at January 2, 2010	680,956	\$ 7.87
Granted	153,799	21.5
Vested	(13,384)	24.05
Forfeited	(18,574)	12.32
Outstanding at January 1, 2011	802,797	\$ 10.37

At January 1, 2011, there was \$4.0 million of unrecognized compensation cost related to RSUs which the Corporation expects to recognize over a weighted-average period of 1.0 year.

#### Retirement Benefits

The Corporation has defined contribution profit-sharing plans covering substantially all employees who are not participants in certain defined benefit plans. The Corporation's annual contribution to the defined contribution plans is based on employee eligible earnings and results of operations and amounted to \$19.1 million, \$20.3 million, and \$24.5 million, in 2010, 2009, and 2008, respectively. A portion of the annual contribution is in the form of common stock of the Corporation. The amount of the stock contribution was \$4.9 million, \$5.5 million, and \$6.6 million in 2010, 2009, and 2008.

The Corporation sponsors defined benefit plans which include a limited number of salaried and hourly members at certain subsidiaries. The Corporation's funding policy is generally to contribute annually the minimum actuarially computed amount. Net pension costs relating to these plans were \$228,000, \$291,000 and \$0, in 2010, 2009 and 2008, respectively. The actuarial present value of obligations, less related plan assets at fair value, is not significant.

The Corporation also participates in a multi-employer plan, which provides defined benefits to certain of the Corporation's union employees. Pension expense for this plan amounted to \$35,000, \$217,000 and \$320,000, in 2010, 2009 and 2008, respectively.

#### Postretirement Health Care

Guidance on employers' accounting for other postretirement plans requires recognition of the overfunded or underfunded status on the balance sheet. Under this guidance, gains and losses, prior services costs and credits and any remaining transition amounts under previous guidance not yet recognized through net periodic benefit cost are recognized in accumulated other comprehensive income (loss), net of tax effects, until they are amortized as a component of net periodic benefit cost. Also, the

measurement date – the date at which the benefit obligation and plan assets are measured – is required to be the Corporation's fiscal year-end.

(In thousands)	2010	2009	2008
<b>Change in benefit obligation</b>			
Benefit obligation at beginning of year	\$ 15,254	\$ 14,864	\$ 15,603
Service cost	362	391	396
Interest cost	839	959	963
Benefits paid	(1,023)	(823)	(1,147)
Actuarial (gain)/loss	(21)	(137)	(951)
Benefit obligation at end of year	\$ 15,411	\$ 15,254	\$ 14,864
<b>Change in plan assets</b>			
Fair value at beginning of year	\$ —	\$ —	\$ 5,819
Actual return on assets	—	—	(274)
Employer contribution	1,023	823	159
Transferred out	—	—	(4,557)
Benefits paid	(1,023)	(823)	(1,147)
Fair value at end of year	\$ —	\$ —	\$ —
<b>Funded Status of Plan</b>	\$ (15,411)	\$ (15,254)	\$ (14,864)
<b>Amounts recognized in the Statement of Financial Position consist of:</b>			
Current liabilities	\$ 1,032	\$ 1,067	\$ 1,089
Noncurrent liabilities	\$ 14,379	\$ 14,187	\$ 13,775
<b>Amounts recognized in Accumulated Other Comprehensive Income (before tax) consist of:</b>			
Actuarial (gain)/loss	\$ (1,724)	\$ (1,720)	\$ (1,592)
Transition (asset)/obligation	1,131	1,639	2,147
Prior service cost	—	—	—
	\$ (593)	\$ (81)	\$ 555
<b>Change in Accumulated Other Comprehensive Income (before tax):</b>			
Amount disclosed at beginning of year	\$ (81)	\$ 555	\$ 1,381
Actuarial (gain)/loss	(21)	(137)	(319)
Amortization of actuarial gain or loss	17	9	—
Amortization of transition amount	(508)	(508)	(507)
Amortization of prior service cost	—	—	—
Amount disclosed at end of year	\$ (593)	\$ (81)	\$ 555
<b>Estimated Future Benefit Payments (In thousands)</b>			
Fiscal 2011			1,032
Fiscal 2012			1,020
Fiscal 2013			1,014
Fiscal 2014			1,022
Fiscal 2015			1,030
Fiscal 2016 – 2020			5,674
<b>Expected Contributions During Fiscal 2011</b>			
Total		\$	1,032



The discount rates at fiscal year-end 2010, 2009 and 2008, were 5.4%, 5.7% and 6.7%, respectively. The Corporation payment for these benefits has reached the maximum amounts per the plan; therefore, healthcare trend rates have no impact on the Corporation's cost. Approximately \$4.5 million of assets previously held in a voluntary employee benefit association (VEBA) fund designated to pay retiree healthcare claims were transferred into a VEBA fund designated to pay active healthcare claims during 2008. As such, there were no funds designated as plan assets as of end of 2008, 2009 and 2010.

<b>Components of Net Periodic Postretirement Benefit Cost</b> (in thousands)	2011
Service cost	\$ 364
Interest cost	804
Amortization of net (gain)/loss	(16)
Amortization of unrecognized transition (asset)/obligation	508
Net periodic postretirement benefit cost/(income)	\$ 1,660

A discount rate of 5.4% was used to determine net periodic benefit cost for 2011. The discount rate is set at the measurement date to reflect the yield of a portfolio of high quality, fixed income debt instruments. There are no plan assets invested.

### Leases

The Corporation leases certain warehouse and plant facilities and equipment. Commitments for minimum rentals under non-cancelable leases at the end of 2010 are as follows:

(In thousands)	Capitalized Leases	Operating Leases
2011	\$ 36	\$ 31,071
2012	35	14,680
2013	35	8,576
2014	35	7,750
2015	15	6,752
Thereafter	—	16,181
Total minimum lease payments	156	\$ 85,010
Less: amount representing interest	16	
Present value of net minimum lease payments, including current maturities of \$29	\$ 140	

Property, plant and equipment at year-end include the following amounts for capitalized leases:

(In thousands)	2010	2009	2008
Buildings	\$ —	\$ —	\$ —
Machinery and equipment	10	438	869
Office equipment	156	—	—
	166	438	869
Less: allowances for depreciation	18	148	126
	\$ 148	\$ 290	\$ 743

Rent expense for the years 2010, 2009 and 2008, amounted to approximately \$36.7 million, \$39.4 million and \$43.2 million, respectively. There was no contingent rent expense under either capitalized and operating leases (generally based on mileage of transportation equipment) for the years 2010, 2009, and 2008.

### Guarantees, Commitments and Contingencies

The Corporation utilizes letters of credit in the amount of \$12 million to back certain financing instruments, insurance policies and payment obligations. The letters of credit reflect fair value as a condition of their underlying purpose and are subject to fees competitively determined.

The Corporation is involved in various kinds of disputes and legal proceedings that have arisen in the course of its business, including pending litigation, environmental remediation, taxes and other claims. It is the Corporation's opinion, after consultation with legal counsel, that additional liabilities, if any, resulting from these matters are not expected to have a material adverse effect on the Corporation's quarterly or annual operating results and cash flows when resolved in a future period.

**Significant Customer**

One office furniture customer accounted for approximately 10%, 9% and 10% of consolidated net sales in 2010, 2009 and 2008, respectively.

**Operating Segment Information**

Management views the Corporation as being in two operating segments: office furniture and hearth products, with the former being the principal segment. The office furniture segment manufactures and markets a broad line of metal and wood commercial and home office furniture which includes storage products, desks, credenzas, chairs, tables, bookcases, freestanding office partitions and panel systems and other related products. The hearth products segment manufactures and markets a broad line of gas, electric, wood and biomass burning fireplaces, inserts, stoves, facings and accessories, principally for the home.

For purposes of segment reporting, intercompany sales transfers between segments are not material, and operating profit is income before income taxes exclusive of certain unallocated corporate expenses. These unallocated corporate expenses include the net costs of the Corporation's corporate operations, interest income and interest expense. Management views interest income and expense as corporate financing costs and not as an operating segment cost. In addition, management applies an effective income tax rate to its consolidated income before income taxes so income taxes are not reported or viewed internally on a segment basis. Identifiable assets by segment are those assets applicable to the respective industry segments. Corporate assets consist principally of cash and cash equivalents, short-term investments, long-term investments and corporate office real estate and related equipment.

No geographic information for revenues from external customers or for long-lived assets is disclosed since the Corporation's primary market and capital investments are concentrated in the United States.

Reportable segment data reconciled to the consolidated financial statements for the years ended 2010, 2009, and 2008, is as follows for continuing operations:

(In thousands)	2010		2009		2008
Net sales:					
Office furniture	\$	1,404,923	\$	1,344,832	\$ 2,018,167
Hearth products		281,805		278,495	411,465
	\$	1,686,728	\$	1,623,327	\$ 2,429,632
Operating profit:					
Office furniture <sup>(a)</sup>	\$	87,559	\$	52,542	\$ 109,140
Hearth products <sup>(b)</sup>		2,915		(14,744)	11,547
Total operating profit		90,474		37,798	120,687
Unallocated corporate expenses		(43,996)		(40,881)	(44,016)
Income (loss) before income taxes	\$	46,478	\$	(3,083)	\$ 76,671
Depreciation and amortization expense:					
Office furniture	\$	44,717	\$	52,137	\$ 50,511
Hearth products		11,474		19,041	15,212
General corporate		2,439		3,689	4,432
	\$	58,630	\$	74,867	\$ 70,155
Capital expenditures:					
Office furniture	\$	20,928	\$	13,482	\$ 59,101
Hearth products		2,423		3,484	10,530
General corporate		3,371		588	1,865
	\$	26,722	\$	17,554	\$ 71,496
Identifiable assets:					
Office furniture	\$	588,540	\$	579,187	\$ 730,348
Hearth products		267,125		291,518	326,168
General corporate		142,215		123,621	109,113
	\$	997,880	\$	994,326	\$ 1,165,629

(a) Included in operating profit for the office furniture segment are pretax charges of \$4.1 million, \$34.9 million and \$25.5 million, for closing of facilities and impairment charges in 2010, 2009 and 2008, respectively.

(b) Included in operating profit for the hearth products segment are pretax charges of \$5.4 million, \$5.5 million and \$0.3 million for closing facilities in 2010, 2009 and 2008, respectively.

#### Summary of Quarterly Results of Operations (Unaudited)

The following table presents certain unaudited quarterly financial information for each of the past 12 quarters. In the opinion of the Corporation's management, this information has been prepared on the same basis as the consolidated financial statements appearing elsewhere in this report and includes all adjustments (consisting only of normal recurring accruals) necessary to present fairly the financial results set forth herein. Results of operations for any previous quarter are not necessarily indicative of results for any future period.

<b>Year-End 2010:</b> (In thousands, except per share data)	First Quarter	Second Quarter	Third Quarter	Fourth Quarter
Net sales	\$ 363,506	\$ 398,222	\$ 458,853	\$ 466,147
Cost of products sold	244,326	256,905	297,635	302,246
Gross profit	119,180	141,317	161,218	163,901
Selling and administrative expenses	122,800	128,032	130,514	136,911
Restructuring related charges (income)	1,834	1,238	(251)	6,628
Operating income (loss)	(5,454)	12,047	30,955	20,362
Interest income (expense) – net	(2,635)	(2,962)	(2,677)	(3,158)
Income (loss) from continuing operations before income taxes	(8,089)	9,085	28,278	17,204
Income taxes	(3,947)	3,493	12,630	4,621
Income (loss) from continuing operations, less applicable income taxes	(4,142)	5,592	15,648	12,583
Discontinued operations, less applicable taxes	(1,711)	(827)	(13)	(7)
Net income (loss)	(5,853)	4,765	15,635	12,576
Less: net income attributable to the noncontrolling interest	133	62	(46)	33
Net income (loss) attributable to HNI Corporation	\$ (5,986)	\$ 4,703	\$ 15,681	\$ 12,543
Income (loss) from continuing operations attributable to HNI Corporation – basic	\$ (0.09)	\$ 0.12	\$ 0.35	\$ 0.28
Discontinued operations attributable to HNI Corporation – basic	\$ (0.04)	\$ (0.02)	\$ (0.00)	\$ (0.00)
Net income (loss) attributable to HNI Corporation per common share – basic	\$ (0.13)	\$ 0.10	\$ 0.35	\$ 0.28
Weighted-average common shares outstanding – basic	45,166	45,193	44,801	44,815
Income (loss) from continuing operations attributable to HNI Corporation – diluted	\$ (0.09)	\$ 0.12	\$ 0.34	\$ 0.27
Discontinued operations attributable to HNI Corporation – diluted	\$ (0.04)	\$ (0.02)	\$ (0.00)	\$ (0.00)
Net income (loss) attributable to HNI Corporation per common share – diluted	\$ (0.13)	\$ 0.10	\$ 0.34	\$ 0.27
Weighted-average common shares outstanding – diluted	45,166	46,012	45,601	45,743
<b>As a Percentage of Net Sales</b>				
Net sales	100.0%	100.0%	100.0%	100.0%
Gross profit	32.8	35.5	35.1	35.2
Selling and administrative expenses	33.8	32.2	28.4	29.4
Restructuring related charges	0.5	0.3	(0.1)	1.4
Operating income (loss)	(1.5)	3.0	6.7	4.4
Income taxes	(1.1)	0.9	2.8	1.0
Income (loss) from continuing operations	(1.1)	1.4	3.4	2.7
Discontinued operations, less applicable taxes	(0.5)	(0.2)	(0.0)	(0.0)
Net income (loss) attributable to HNI Corporation	(1.6)	1.2	3.4	2.7

<b>Year-End 2009:</b> (In thousands, except per share data)	First Quarter	Second Quarter	Third Quarter	Fourth Quarter
Net sales	\$ 396,829	\$ 374,772	\$ 446,173	\$ 405,553
Cost of products sold	274,182	247,215	281,528	257,601
Gross profit	122,647	127,557	164,645	147,952
Selling and administrative expenses	133,938	122,637	126,091	131,110
Restructuring related charges	5,085	3,878	4,440	27,040
Operating income (loss)	(16,376)	1,042	34,114	(10,198)
Interest income (expense) – net	(3,064)	(2,923)	(3,116)	(2,562)
Income (loss) from continuing operations before income taxes	(19,440)	(1,881)	30,998	(12,760)
Income taxes	(7,742)	(635)	10,382	(3,490)
Income (loss) from continuing operations less applicable taxes	(11,698)	(1,246)	20,616	(9,270)
Discontinued operations, less applicable income taxes	(161)	(144)	(2,856)	(1,500)
Net income (loss)	(11,859)	(1,390)	17,760	(10,770)
Less: net income attributable to the noncontrolling interest	27	7	146	3
Net income (loss) attributable to HNI Corporation	\$ (11,886)	\$ (1,397)	\$ 17,614	\$ (10,773)
Income (loss) from continuing operations attributable to HNI Corporation – basic	\$ (0.26)	\$ (0.03)	\$ 0.45	\$ (0.21)
Discontinued operations attributable to HNI Corporation – basic	\$ (0.00)	\$ (0.00)	\$ (0.06)	\$ (0.03)
Net income (loss) per common share – basic	\$ (0.27)	\$ (0.03)	\$ 0.39	\$ (0.24)
Weighted-average common shares outstanding – basic	44,612	44,895	44,994	45,054
Income (loss) from continuing operations attributable to HNI Corporation – diluted	\$ (0.26)	\$ (0.03)	\$ 0.45	\$ (0.21)
Discontinued operations attributable to HNI Corporation – diluted	\$ (0.00)	\$ (0.00)	\$ (0.06)	\$ (0.03)
Net income (loss) per common share – diluted	\$ (0.27)	\$ (0.03)	\$ 0.39	\$ (0.24)
Weighted-average common shares outstanding – diluted	44,612	44,895	45,598	45,054
<b>As a Percentage of Net Sales</b>				
Net sales	100.0%	100.0%	100.0%	100.0%
Gross profit	30.9	34.0	36.9	36.5
Selling and administrative expenses	33.8	32.7	28.3	32.3
Restructuring related charges	1.3	1.0	1.0	6.7
Operating income (loss)	(4.1)	0.3	7.6	(2.5)
Income taxes	(2.0)	(0.2)	2.3	(0.9)
Income (loss) from continuing operations	(2.9)	(0.3)	4.6	(2.3)
Discontinued operations, less applicable taxes	(0.0)	(0.0)	(0.6)	(0.4)
Net income (loss) attributable to HNI Corporation	(3.0)	(0.4)	3.9	(2.7)

<b>Year-End 2008:</b> (In thousands, except per share data)	First Quarter	Second Quarter	Third Quarter	Fourth Quarter
Net sales	\$ 552,328	\$ 600,048	\$ 651,247	\$ 626,008
Cost of products sold	370,490	393,670	429,203	418,387
Gross profit	181,838	206,378	222,044	207,621
Selling and administrative expenses	169,969	179,860	186,838	172,970
Restructuring related charges	818	2,029	1,497	11,536
Operating income	11,051	24,489	33,709	23,115
Interest income (expense) – net	(3,414)	(4,184)	(4,037)	(4,058)
Income from continuing operations before income taxes	7,637	20,305	29,672	19,057
Income taxes	2,834	7,037	10,158	5,936
Income from continuing operations, less applicable taxes	4,803	13,268	19,514	13,121
Discontinued operations, less applicable income taxes	(682)	191	(8)	(4,600)
Net income	4,121	13,459	19,506	8,521
Less: Net income attributable to the noncontrolling interest	144	(10)	17	6
Net income attributable to HNI Corporation	\$ 3,977	\$ 13,469	\$ 19,489	\$ 8,515
Income from continuing operations attributable to HNI Corporation – basic	\$ 0.10	\$ 0.30	\$ 0.44	\$ 0.30
Discontinued operations attributable to HNI Corporation – basic	(0.02)	0.00	(0.00)	(0.10)
Net income attributable to HNI Corporation per common share – basic	\$ 0.09	\$ 0.30	\$ 0.44	\$ 0.19
Weighted-average common shares outstanding – basic	44,537	44,233	44,213	44,259
Income from continuing operations attributable to HNI Corporation – diluted	\$ 0.10	\$ 0.30	\$ 0.44	\$ 0.30
Discontinued operations attributable to HNI Corporation – diluted	(0.02)	0.00	(0.00)	(0.10)
Net income attributable to HNI Corporation per common share – diluted	\$ 0.09	\$ 0.30	\$ 0.44	\$ 0.19
Weighted-average common shares outstanding – diluted	44,706	44,370	44,340	44,386
<b>As a Percentage of Net Sales</b>				
Net sales	100.0%	100.0%	100.0%	100.0%
Gross profit	32.9	34.4	34.1	33.2
Selling and administrative expenses	28.0	28.0	28.0	28.0
Restructuring related charges	0.1	0.3	0.2	1.8
Operating income	2.0	4.1	5.2	3.7
Income taxes	0.5	1.2	1.6	0.9
Income from continuing operations	3.4	3.4	3.4	3.4
Discontinued operations, less applicable taxes	(0.1)	0.0	(0.0)	(0.7)
Net income attributable to HNI Corporation	0.7	2.2	3.0	1.4

INVESTOR INFORMATION

**Common Stock Market Prices and Dividends (Unaudited)**

**Quarterly 2010 – 2008**

2010 by Quarter		High		Low	Dividends per Share
1 <sup>st</sup>	\$	28.60	\$	23.19	0.215
2 <sup>nd</sup>		35.29		25.13	0.215
3 <sup>rd</sup>		29.68		22.80	0.215
4 <sup>th</sup>		33.12		23.97	0.215
<b>Total Dividends Paid</b>					<b>0.86</b>
2009 by Quarter		High		Low	Dividends per Share
1 <sup>st</sup>	\$	17.29	\$	7.70	0.215
2 <sup>nd</sup>		19.00		11.00	0.215
3 <sup>rd</sup>		24.26		15.85	0.215
4 <sup>th</sup>		29.40		21.94	0.215
<b>Total Dividends Paid</b>					<b>0.86</b>
2008 by Quarter		High		Low	Dividends per Share
1 <sup>st</sup>	\$	37.97	\$	26.64	0.215
2 <sup>nd</sup>		28.37		18.07	0.215
3 <sup>rd</sup>		34.37		16.71	0.215
4 <sup>th</sup>		25.76		9.09	0.215
<b>Total Dividends Paid</b>					<b>0.86</b>

**Common Stock Market Price and Price/Earnings Ratio (Unaudited)**

**Fiscal Years 2010 – 2006**

Year	Market Price		Diluted Earnings per Share	Price/Earnings Ratio	
	High	Low		High	Low
2010	\$ 35.29	\$ 22.80	\$ 0.59	60	39
2009	29.40	7.70	(0.14)	(210)	(55)
2008	37.97	9.09	1.02	37	9
2007	51.65	33.79	2.57	20	13
2006	61.68	38.34	2.45	25	16
<b>Five-Year Average</b>				<b>(14)</b>	<b>4</b>

**SCHEDULE II – VALUATION AND QUALIFYING ACCOUNTS**

**HNI CORPORATION AND SUBSIDIARIES**

January 1, 2011

COL. A	COL. B	COL. C	COL. D	COL. E	
DESCRIPTION	BALANCE AT BEGINNING OF PERIOD	ADDITIONS		DEDUCTIONS (DESCRIBE)	BALANCE AT END OF PERIOD
		(1) CHARGED TO COSTS AND EXPENSES	(2) CHARGED TO OTHER ACCOUNTS (DESCRIBE)		
(In thousands)					
Year ended January 1, 2011:					
Allowance for doubtful accounts	\$ 6,410	\$ 2,355	—	\$ 3,286 (A)	\$ 5,479
Valuation allowance for deferred tax asset	—	\$ 1,149			\$ 1,149
Year ended January 2, 2010:					
Allowance for doubtful accounts	\$ 8,788	\$ 2,511	—	\$ 4,889 (A)	\$ 6,410
Valuation allowance for deferred tax asset	3,073	\$ (3,073)	—	—	\$ —
Year ended January 3, 2009:					
Allowance for doubtful accounts	\$ 11,458	\$ 3,107	—	\$ 5,777 (A)	\$ 8,788
Valuation allowance for deferred tax asset	—	\$ 3,073	—	—	\$ 3,073

Note A: Excess of accounts written off over recoveries.



## **ITEM 15(c) - INDEX OF EXHIBITS**

<u>Exhibit Number</u>	<u>Description of Document</u>
(3.1)	Articles of Incorporation of HNI Corporation, as amended, incorporated by reference to Exhibit 3.1 to the Registrant's Annual Report on Form 10-K for the year ended January 2, 2010
(3.2)	By-laws of HNI Corporation, as amended, incorporated by reference to Exhibit 3.1 to the Registrant's Quarterly Report on Form 10-Q for the quarter ended July 30, 2010
(10.1)	HNI Corporation 2007 Stock-Based Compensation Plan, as amended and restated, incorporated by reference to Appendix A to the Registrant's Proxy Statement on Schedule 14A dated March 26, 2010 for the Registrant's Annual Meeting of Shareholders held on May 11, 2010*
(10.2)	2007 Equity Plan for Non-Employee Directors of HNI Corporation, as amended and restated, incorporated by reference to Exhibit 10.2 to the Registrant's Annual Report on Form 10-K for the year ended January 2, 2010*
(10.3)	Form of HNI Corporation Change In Control Employment Agreement, incorporated by reference to Exhibit 10.1 to the Registrant's Current Report on Form 8-K filed November 16, 2006*
(10.4)	HNI Corporation Supplemental Income Plan (f/k/a HNI Corporation ERISA Supplemental Retirement Plan), as amended and restated, incorporated by reference to Exhibit 10.4 to the Registrant's Current Report on Form 8-K filed February 22, 2010*
(10.5)	Form of HNI Corporation Amended and Restated Indemnity Agreement, incorporated by reference to Exhibit 10.1 to the Registrant's Current Report on Form 8-K filed November 14, 2007*
(10.6)	Form of 2007 Equity Plan For Non-Employee Directors of HNI Corporation Participation Agreement, incorporated by reference to Exhibit 10.26 to the Registrant's Annual Report on Form 10-K for the year ended January 2, 2010*
(10.7)	Form of HNI Corporation 2007 Stock-Based Compensation Plan Stock Option Award Agreement, incorporated by reference to Exhibit 10.1 to the Registrant's Quarterly Report on Form 10-Q for the quarter ended July 4, 2009*
(10.8)	Credit Agreement dated as of June 11, 2010, by and among HNI Corporation, as Borrower, certain domestic subsidiaries of HNI Corporation from time to time party thereto, as Guarantors, certain lenders party thereto and Wells Fargo Bank, National Association, as Administrative Agent, incorporated by reference to Exhibit 10.1 to the Registrant's Current Report on Form 8-K filed June 16, 2010
(10.9)	Description of Material Compensatory Arrangements Contained in Offer Letter between HNI Corporation and Kurt Tjaden, incorporated by reference to Exhibit 10.3 to the Registrant's Quarterly Report on Form 10-Q for the quarter ended September 27, 2008*
(10.10)	HNI Corporation Long-Term Performance Plan, as amended and restated, incorporated by reference to Appendix C to the Registrant's Proxy Statement on Schedule 14A dated March 26, 2010, for the Registrant's Annual Meeting of Shareholders held on May 11, 2010*
(10.11)	HNI Corporation Executive Deferred Compensation Plan, as amended and restated, incorporated by reference to Exhibit 10.12 to the Registrant's Annual Report on Form 10-K for the year ended January 2, 2010*

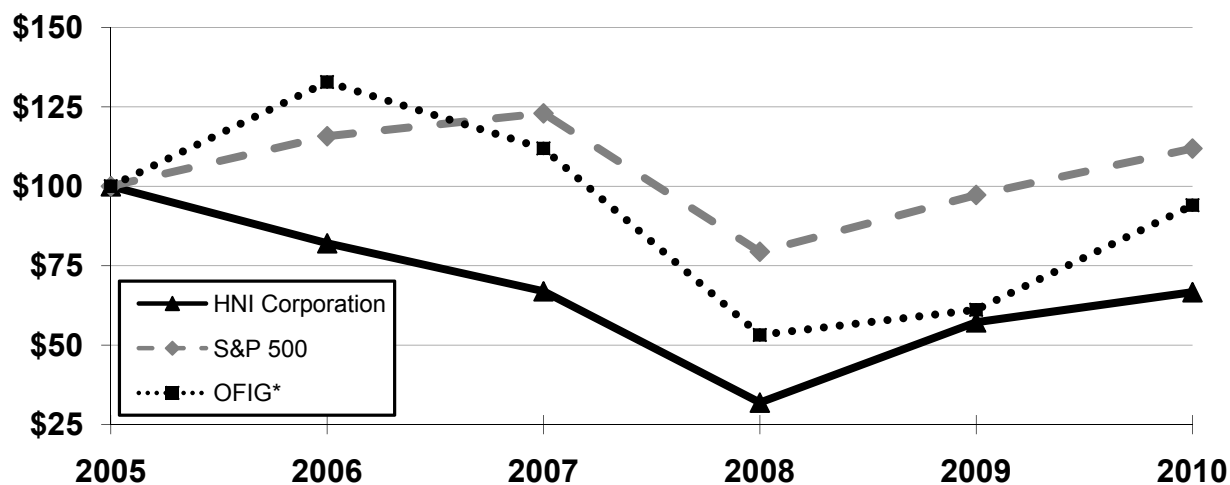
<u>Exhibit Number</u>	<u>Description of Document</u>
(10.12)	Note Purchase Agreement dated as of April 6, 2006, by and among HNI Corporation and the Purchasers named therein, incorporated by reference to Exhibit 10.2 to the Registrant's Current Report on Form 8-K filed April 10, 2006
(10.13)	HNI Corporation Directors Deferred Compensation Plan, as amended and restated, incorporated by reference to Exhibit 10.15 to the Registrant's Annual Report on Form 10-K for the year ended January 2, 2010*
(10.14)	HNI Corporation Annual Incentive Plan (f/k/a HNI Corporation Executive Bonus Plan), as amended and restated, incorporated by reference to Appendix B to the Registrant's Proxy Statement on Schedule 14A dated March 26, 2010, for the Registrant's Annual Meeting of Shareholders held on May 11, 2010*
(10.15)	Form of HNI Corporation Amendment No. 1 to Change in Control Employment Agreement incorporated by reference to Exhibit 10.1 to the Registrant's Current Report on Form 8-K filed August 10, 2007*
(10.16)	Form of HNI Corporation 2007 Stock-Based Compensation Plan Restricted Stock Unit Award Agreement, incorporated by reference to Exhibit 10.2 to the Registrant's Quarterly Report on Form 10-Q for the quarter ended April 4, 2009 (for restricted stock unit awards granted in 2009)*
(10.17)	HNI Corporation Stock-Based Compensation Plan, as amended, incorporated by reference to Exhibit 10.1 to the Registrant's Quarterly Report on Form 10-Q for the quarter ended September 30, 2006*
(10.18)	Form of Exercise of Stock Option granted under the HNI Corporation Stock-Based Compensation Plan, incorporated by reference to Exhibit 10.2 to the Registrant's Quarterly Report on Form 10-Q for the quarter ended September 27, 2008*
(10.19)	Form of HNI Corporation Stock-Based Compensation Plan Stock Option Award Agreement, incorporated by reference to Exhibit 99D to the Registrant's Current Report on Form 8-K filed February 22, 2005*
(10.20)	Form of HNI Corporation 2007 Stock-Based Compensation Plan Restricted Stock Unit Award Agreement, incorporated by reference to Exhibit 10.2 to the Registrant's Quarterly Report on Form 10-Q for the quarter ended April 3, 2010 (for restricted stock unit awards granted in 2010)*
(10.21)	Form of HNI Corporation Executive Deferred Compensation Plan Deferral Election Agreement, incorporated by reference to Exhibit 10.25 to the Registrant's Annual Report on Form 10-K for the year ended January 2, 2010*
(10.22)	Form of HNI Corporation Directors Deferred Compensation Plan Deferral Election Agreement, incorporated by reference to Exhibit 10.6 to the Registrant's Annual Report on Form 10-K for the year ended January 2, 2010*
(21)	Subsidiaries of the Registrant <sup>+</sup>
(23)	Consent of Independent Registered Public Accounting Firm <sup>+</sup>
(31.1)	Certification of CEO pursuant to Section 302 of the Sarbanes-Oxley Act of 2002 <sup>+</sup>
(31.2)	Certification of CFO pursuant to Section 302 of the Sarbanes-Oxley Act of 2002 <sup>+</sup>
(32.1)	Certification of CEO and CFO Pursuant to 18 U.S.C. Section 1350, as Adopted Pursuant to Section 906 of the Sarbanes-Oxley Act of 2002 <sup>+</sup>

\* Indicates management contract or compensatory plan.

<sup>+</sup> Filed herewith.

## Performance Graph

Comparison of Five-Year Cumulative Return



Annual Return	2005	2006	2007	2008	2009	2010
HNI Corporation	\$100.0	\$82.1	\$67.0	\$31.9	\$57.2	\$66.7
S&P500	\$100.0	\$115.8	\$122.9	\$79.4	\$97.3	\$111.9
OFIG*	\$100.0	\$132.8	\$111.9	\$53.2	\$61.1	\$94.0

\*The Office Furniture Industry Group (OFIG) is a composite peer index constructed by the Corporation weighted by market capitalization and comprised of the following companies: Herman Miller, Inc.; Kimball International, Inc., Knoll, Inc. and Steelcase Inc. It is weighted at the beginning of each quarter according to the market capitalization of its constituents on the last trading day of the Corporation's prior fiscal quarter.

Total returns for HNI Corporation, S&P 500 and OFIG are depicted at the end of Corporation's fiscal years. The total return assumes \$100.00 invested in each of the Corporation's common stock, the S&P 500 and OFIG stocks at the end of the Corporation's 2005 fiscal year (December 31, 2005), plus further reinvestment of dividends on the date of dividend payment. S&P 500 returns assume S&P 500 dividends are paid and reinvested on the last trading day of each of the Corporation's fiscal quarters.

The comparative performance of the Corporation's common stock against the indexes as depicted in this graph is dependent on the price of stock at a particular measurement point in time. Since individual stocks are more volatile than broader stock indexes, the perceived comparative performance of the Corporation's common stock may vary based on the strength or weakness of the stock price at the new measurement point used in each future performance graph. For this reason, the Corporation does not believe this graph should be considered as the sole indicator of the Corporation's performance.